

National Access Forum Written Contributions

NAFW 69: 26 June 2021

Introduction

This note is collated and edited by NRW from submissions from Forum members and NRW staff prior to National Access Forum Meetings to facilitate the sharing of information.

Contents

The British Horse Society	2
British Mountaineering Council	4
Canoe Wales	6
Elan Valley Trust.....	7
Ramblers Cymru	10
Sustrans Cymru	12
Welsh Water	14
NRW	15
Promoting the 50 th Anniversary of Offa's Dyke Path National Trail 2021	15
Countryside Code	18

The British Horse Society

Mark Weston mark.weston@bhs.org.uk

General interest

At the last meeting we reported the launch of our new horse incidents app. It enables equestrians to quickly and easily submit details of incidents that have negatively affected their safety.

644 incidents have been reported via the app and 487 incidents reported on the updated website since the App's launch on 8th March – a total of 1,131 incidents. In the same time period in 2019 (March – June) we received 322 incident reports, which represents a 251% increase in reporting.

94 incidents were reported over the May Bank Holiday weekend - the highest figure we have seen over a couple of days period.

The app is called 'Horse i' and is free to download. It has been specifically designed to empower equestrians to immediately report any incidents they encounter directly to the BHS via a simple, easy-to-use interface.

We hope that the app will equip and encourage many more equestrians to report incidents to us, enabling us to use the data to support our campaigns to improve equestrian safety.

The 'Horse i' app is available for both Apple and Android phones. It is also available to download now on your work mobile device. You can download the app from the following links:

iPhone: <https://apps.apple.com/gb/app/horse-i/id1533153618>

Android: https://play.google.com/store/apps/details?id=com.BHS.Horsei&hl=en_GB

Equestrians who do not use smart phones can record incidents at www.horseincidents.org.uk



Policy and Legislation

Active Travel

We continue to respond to many active travel schemes to ensure that horse riders are not excluded and schemes do not act as a total barrier to horse riders who want to be able to access such schemes so that they are not segregated.

Our concern is that while active travel schemes are being designed for various forms of commuting, some local authorities are failing to integrate them with the existing rights of way network, or considering that when these routes are put in place, that users might well use them for purposes other than commuting.

There is often no communication with the LAF or even with the LA's own countryside access department.

The Society is concerned at the apparent mutual exclusivity between Active Travel and recreational access.

Active Travel provisions should include facilities for horse riders and carriage drivers (Restricted Byway). Area Plans for towns should consider horses using towns as both origins and thoroughfares.

2026

Our Access and Bridleways Officers continue to research and submit definitive map modification order applications in respect of routes that will be extinguished if the 2026 cut off date is implemented; and it would be useful if it could be confirmed that the cut off date will not be implemented.

Funding & Resources

We currently have 31 volunteer Access and Bridleways Officers and 7 affiliated Equestrian Access Groups in Wales.

If you would like to receive our monthly access enews please email access@bhs.org.uk

Campaigns and Events

Ride Out UK and Rideathon

Subject to Covid restrictions permitting our Ride Out UK and Rideathon campaigns will be running from May to the end of October. We will be organising fun rides to raise funds for our Ride Out Fund which provides funding for route creations and improvements, which in turn provides improvements for all non motorised users.

BHS Affiliated Briars Bridleway Group based in RCT held an event in May which was a great success with many riders attending. We hope to run more rides before the end of October.

If you know of anyone wanting to take up our Rideathon challenge please direct them to [Ride Out UK \(ROUK\) 2021 | May to October 2021 | British Horse Society \(BHS\)](#)

Lon Las Ogwen - A Multi-user Trail into Snowdonia

The local community, Local and Park Authorities, and user groups have worked together to create a spectacular 25km route from Port Penrhyn at Bangor to Capel Curig along the Ogwen Valley.

This Lon Las Ogwen route has taken a full 20 years of work to complete led by Gwynedd Council from the western Bangor start and Conwy Council and the Snowdonia National Park from the eastern Capel Curig end.

Constructed in several sections using many different funding streams available over the years the needs of all non-motorised users have been integrated to make the route a success and has provided important community and tourism benefits to the area.

Staffing

Access Field Officer for Wales

We will be appointing an Access Field Officer for Wales, the recruitment process will begin the summer.

British Mountaineering Council

Elfyn Jones elfyn@thebmc.co.uk

General interest

As with most other bodies and organisations the BMC has seen a considerable number of people visiting the countryside who may not have previously done to any extent before, and we have put a lot of time and effort into producing guidance and advice on behaviour

for these first time visitors. With indoor climbing walls and similar facilities remaining closed for most of the winter and early spring, many indoors climbers have been venturing outside, which is great to see but also comes with the added issues that many of these people are not accustomed to climbing outdoors and do not fully understand some of the issues, including safety as well as ethical and behaviour matters.

To help with this we launched a strong social media campaign to target this audience, creating a number of short punchy Youtube videos featuring some of the more well known young climbers. The videos include site specific advice for locations such as for climbing in Pembrokeshire and other sensitive locations, but also theme specific issues such as wild camping and more controversially around the issues of so-called “wild vanning”. The campaign is called Respect the Wild and can be seen here:

https://www.youtube.com/results?search_query=respect+the+wild+bmc

Policy and Legislation

Just prior to the Senedd Elections, we published and launched our Manifesto for Climbing and Hill-Walking, highlighting five key “asks” from the new government in Wales. The Manifesto can be seen and downloaded from our website :-

[https://www.thebmc.co.uk/media/files/475%20BMC%20Wales%20Manifesto%20English%20V4%20\(ONLINE\).pdf](https://www.thebmc.co.uk/media/files/475%20BMC%20Wales%20Manifesto%20English%20V4%20(ONLINE).pdf)

Funding & Resources

BMC has seen a substantial drop in income as a result of the pandemic, including a drop in membership and particularly a very substantial drop in commercial income (a large percentage of BMC income is from sales of specialised travel, rescue and medical insurance for climbers and mountaineers going overseas, which has effectively completely dried up). A consequence of this is that all staff have had to be either fully or partially furloughed at various times, and this is set to continue until the end of September, which is having significant impact on ability to respond to issues and to deal with matters in a timely manner. In practice it has meant that staff capacity has been reduced by about 30% during this period.

Staffing

I’m very pleased to report that at long last, despite the funding issues previously mentioned, the BMC has managed to fund and recruit a Part-Time (three days a week) Wales Policy and Campaigns Officer. Eben Muse, a first language Welsh speaker originally from North Wales, started with the BMC in mid April and is Cardiff based. We are still working on the exact breakdown of responsibilities but Eben will be taking forward the bulk of the BMC’s Policy work in Wales (especially so in areas such as sports policy, climate change, political influence, Welsh language policy and general environmental work) and going forwards, I will be reducing my hours and concentrating more on sites based work however I’m likely to retain responsibility for some specific aspects of access policy, especially the NAFW and the Access Reform Programme.

Canoe Wales

Phil Stone phil.stone@canoewales.com

General interest

Canoe Wales is the Governing Body for Paddlesport in Wales. We are here to support our members, advocate for canoeing and kayaking in Wales and help paddlers at every step on their paddlesport career – whether they are recreational paddlers who want to enjoy our gorgeous lakes, rivers and coastal waters, or competitive paddlers on their way to Olympic or Paralympic podiums.

We have seen a greater demand for information on accessing water for recreation since last summer and can report an increase in member numbers of just about 20%. More people are taking up paddlesport as their chosen form of recreation.

<https://www.canoewales.com/>

Staffing

Canoe Wales has recently appointed a new CEO, Alistair Dickson. Alistair has come back home to Wales having spent several years working for the RYA as their High performance manager and director of Sport Development and for a short while, interim CEO of RYA Cymru.

Funding & Resources

Canoe Wales were successful in securing Welsh Government funding to improve disabled access for water related recreation. The project has secured money to install pontoons with an EZ-Launch system, an innovative canoe launch system with an integrated transfer bench seat which allows wheelchair users to easily transfer into a boat. Where required, the project has also included any groundworks and path construction necessary to enable independent wheelchair access from the carpark to the pontoon.

Three pontoons are already in location at Llandegfedd reservoir, cosmeton lakes and Llandysul. The following two at Llyn Padarn and Llyn Mymbyr will be in place in the coming weeks.

Campaigns and Events

Check Clean Dry

Some of our Welsh Government funding is going towards the Check Clean Dry initiative by providing number of washdown stations so that paddlers can clean their boats after use and lessen the risk of carrying invasive species to other waters.

<https://www.canoewales.com/protecting-our-environment>

Each member of Canoe Wales has received information and identification guides for invasive species that can affect our waters. Again this is part of the awareness raising for the Check Clean Dry initiative. Thanks go to NRW for supplying this bi-lingual material.

She Paddles Cymru

Canoe Wales is running the She Paddles Cymru initiative.

Now into its second year it was set up to encourage more women and girls to get into paddling. A series of events is held around Wales for ladies to try out different types of paddling and hopefully encourage them to join the growing band of paddlers. For more information go to <https://www.canowales.com/shepaddlescymru#shepaddlescymru>

The three events held so far this year have attracted 90 participants and there are another 4 events to go.

Elan Valley Trust

Kevin Straw, Elan Links Access & Recreation Officer
kevin.straw@elanvalley.org.uk

Elan Links

Elan Links is a National Lottery Heritage funded scheme which aims to secure Elan's heritage and boost the opportunities available within the Elan Valley for the future.

26 projects will be delivered between 2018 and 2023 under four themes:

- Celebrating heritage - Protecting and restoring historic sites and archiving people's histories and stories
- Enjoying Elan - Increasing access, recreation and learning opportunities for visitors.
- Experience and education - Providing opportunities to experience the Elan Valley through volunteering, as well as education and training
- Enhancing nature and wildlife - Restoring and enhancing natural environments

£3.3million will be invested in the Elan Valley area to safeguard heritage and increase the opportunities for visitors.

<https://www.elanvalley.org.uk/about/elan-links/what-elan-links>

Access and Recreation

Having achieved a great number of access and recreation improvements across Elan within the first half of the Elan Links programme a review of the Access and Recreation Plan is currently underway. This review will allow for reflection on successes to date as well as the ability to focus attention on areas of improvement still to be realised.

To date, improvements across access and recreation within Elan have included: -

- New hubs established at Claerwen, Nantgwyllt and Penbont – offering new interpretation boards, circular trails and cultural & historical information related to the local area.

- Large scale improvements to signage and interpretation around Elan and the Visitors Centre.
- The creation of a new, purpose built, mountain bike track; enabling both blue and red graded routes to be ridden.
- Dark Skies interpretation panels across Elan, informing visitors of what Elan has to offer at night. This has been bolstered by the recent completion of a Dark Skies observation shelter, enabling users to observe the night sky under cover.

The Elan Links scheme has also brought together a wide number of access user groups and stakeholders and the local highway authority, as well as working alongside its two main partners throughout; the Elan Valley Trust and Dŵr Cymru Welsh Water. Looking forwards, there are numerous access & recreational opportunities to be undertaken. In the short-term the scheme will be focussing on these key aims:

- Bring on-line an access and recreation asset database management system; to enable both Elan Valley Trust and Dŵr Cymru Welsh Water to manage their respective land areas and their assets (both access related and recreational), as well as help establish maintenance regimes and enable longer-term budget management decisions by better understanding asset depreciation and maintenance and replacement of access furniture.
- Undertake a full condition survey of all access and recreational assets and facilities across Elan and populate the new database management system. This will enable a full understanding of what assets exist, what condition they are in and help develop future budgeting and funding programs in the years to come.
- Establish an Access & Recreation Strategy document, co-owned between Elan Valley Trust and Dŵr Cymru Welsh Water. This document will outline a series of key principles, aspects of best-practice and work towards 'Access for All', with the 'Least Restrictive Access' process. New access furniture is to be installed to meet British Standards wherever possible, and afford the greatest number of lawful users the ability to access routes wherever they can.

Additional aims include:

- Further interpretation renewal across Elan.
- Improvements to facilities provision, including parking, toilets and other amenities.
- Upgrading access furniture where degraded, to meet British Standards wherever feasible.
- Development of a series of walking routes, made available within the Visitors Centre.
- Further co-operative working between stakeholders, user groups and key partners.
- Examine opportunities to further widen access and recreational opportunities across Elan for more niche activities.

A few pictures of the improvements being made to access and recreation provision across Elan: Example of old and new triptychs:



Examples of new waymarking for routes from Claerwen and Penbont hubs



Dark Skies Interpretation

For more information on Elan Links and the work being undertaken across all the projects, please visit the Elan web pages.

<https://www.elanvalley.org.uk/about/elan-links>

Ramblers Cymru

Rebecca Brough Rebecca.Brough@ramblers.org.uk

General interest

Train station walks project

Over the past year we have been working with South West Wales Connected (SWWC), a new community rail partnership, to discover and promote family friendly walks from every station along their rail line. All 30 stations from Port Talbot to Pembroke Dock are being visited to identify suitable walks, and we are developing family-friendly maps and activities.

All walks are being made available here: <http://www.southwestwales.co/walks/>

Policy and Legislation

Agricultural White Paper

Securing stronger mechanisms for Land manager compliance with access obligations will be a key focus of our policy and advocacy work for the coming year. We are concerned that the recent white paper consultation was weak on access as a public good; and did not mentioned access as part of National Minimal Standards.

We will be working with partners in the Outdoor Alliance Wales, and Wales Environment Link to highlight our concerns and seek to influence the eventual legislation.

Wales for Walking the route to recovery

We are continuing to engage Senedd Members with the vision and asks outlined in our recent Manifesto. You can find it here: <https://www.ramblers.org.uk/en/get-involved/campaign-with-us/ramblers-cymru-manifesto-2021.aspx>

Funding & Resources

Paths to Wellbeing: ENRaW project

We have successfully secured funding for a 2-year Pan-Wales project to improve access through community involvement in nature and paths enhancements. In partnership with Local Authorities, the Wildlife Trust, and the Woodland Trust a team of Regional officers will support local people to improve the quality of their green spaces and path networks, improve health and wellbeing through volunteering and walking; and create better and new circular routes.

We anticipate all project staff being in post by August 2021.

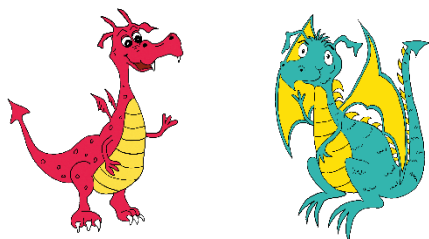
Regional work plans will be developed in consultation with partners and community groups. Delivery will focus on improving the natural environment and access infrastructure in ways which enhance the work of partners and supports local wellbeing objectives and other existing plans (including Rights of Way improvement plans).

The project will work in at least 18 communities and facilitate and empower existing and new volunteers to become to improve their environments, and to walk more regularly.

<https://www.ramblers.org.uk/en/get-involved/campaign-with-us/paths-to-wellbeing.aspx>

Family Walking resources: Ramble and Scramble

As part of our Family Walking Trails and Tesco Bags of Help funding, we have developed a new set of family resources, using two new characters: dragons called Ramble and Scramble.



A new activity book, and a 12-week walking challenge have been created to help get families more active and encourage them to explore their local paths.

Our Family Walking Trails project has also produced a new suite of walk leaflets, which are being made available in Valley's Regional Park Discovery Gateways.

Campaigns and Events

Mark my Paths: pilot project

Our Pathwatch research in 2017 showed missing or damaged signposts as one of the most common problems affecting walkers in Wales.

Working with two neighbouring local authorities in South East Wales - Torfaen and Monmouthshire, the Mark my Paths pilot project has involved volunteers surveying the network to collect information on the state of signposts in both counties.

Provisional data shows just 4 in 10 signposts in place on the roadside. The data collected will help us better understand the state of the network and will be used to make the case for better support for access.

Offa's Dyke Trail: 50th celebrations

We are working with NRW and others to support the Offa's Dyke Trail 50th Anniversary celebrations. This includes a virtual walking challenge (launching in the summer) and our Big Welsh Walk which this year will be a series of walks on and around the trail over 3 weekends in September.

Sustrans Cymru

Paula Renzel paula.renzal@sustrans.org.uk

About

Sustrans is the charity making it easier for people to walk and cycle. We connect people and places, create liveable neighbourhoods, transform the school run and deliver a happier, healthier commute.

General interest

Liveable cities and towns for everyone

Cities and towns should be places that prioritise the people who live and spend time there. We believe that there are five things that make a town or city 'liveable' and we aim to influence and deliver place-making that:

- **Has social connection at its heart** – it is a welcoming place, where everyone can move and live well together.
- **Provides most of what you need just a short walk away** – people have the ability to meet most of their everyday needs within an easy and attractive walk of their home (20-minute neighbourhood principal). Access to cycles, cycle infrastructure and affordable public transport should serve longer journeys
- **Has roots and celebrates its unique character** - By valuing and enhancing the civic, historic, natural and cultural heritage of the places we live, local communities and economies will flourish. People should feel at home and proud of what makes them unique. [identity]
- **Has facilities that make it easy for everyone to move around healthily** - The benefits of walking, cycling and wheeling aren't experienced equitably. No one should face barriers to living and moving well. Our cities and towns must be inclusive and safe for all, and we must tackle the physical and social barriers. Urban planning, policy and practice should take into account a wider range of voices. [movement]
- **Has clean air and green space for all to live and play in** - The design of our cities and towns determines our health and impacts the quality and length of our

lives. People living in deprived areas are less likely to have access to clean air, green space, and safe streets – their health and wellbeing suffer as a result. Urban policy, practice and decision making should be focused on addressing inequality

Policy and Legislation

A Clean Air Act for Wales

In our [Manifesto for the Senedd elections](#) and through our work with the [Healthy Air Cymru](#) coalition we asked for a Clean Air Act for Wales to be delivered within a 100 days of the new term. With the programme for government lacking in detail, Healthy Air Cymru is recruiting Healthy Air Champions to advocate for a rapidly delivered Clean Air Act.

Programme for Government (Relevant sections to the work of Sustrans)

Commitments on Active Travel:

- Work with schools to promote Active Travel and Road Safety.
- Develop new Active Travel Integrated Network Maps.
- Give Transport for Wales new powers to better integrate rail, bus and active travel and regulate for them to meet Welsh Language standards.
- Invest in travel options that encourage public transport and support walking and cycling.
- Work with Transport for Wales and local authorities to strengthen the promotion of walking and cycling.

On sustainable transport:

- Create a modern legislative basis for transport in Wales.
- Lift the ban on local authorities setting up new municipal bus companies.
- Implement our new Wales Transport Strategy.
- Build on the success of our concessionary travel scheme for older people and look at how fair fares can encourage integrated travel.
- Work towards our new target of 45% of journeys by sustainable modes by 2040, setting more stretching goals where possible.
- Take forward the Burns Commission report for Newport.

Campaigns and Events

National Cycle Network funding

Our focus this year will be to highlight the National Cycle Network and the opportunities it offers for active travel, leisure walking, cycling and wheeling, but also tourism. We are

meeting Members of the Senedd on the Network across Wales over the summer, and will be looking to raise the issue in the Senedd during the autumn.

A Barrier-free Wales by 2025

What we mean by barriers are those gates and structures found at the entrance of paths or the National Cycle Network that physically stop people who need the mental and physical benefits of public green space the most.

They prevent young families and people who are older or disabled from getting to their local green spaces and from moving actively and sustainably around their neighbourhoods.

It would be a relatively small, low-cost measure that all local authorities and private landowners can carry out to remove restrictive barriers and access controls.

This will have a big impact on making walking, cycling and wheeling more inclusive, but they may have been overlooked in the current climate.

[Read Amanda's story to understand the difference this work can make.](#)

Welsh Water

Vicky Martin

General interest

Llys Y Fran Lake reopens

Llys Y Fran Lake in Pembrokeshire reopened to visitors on 18 June after a £4m redevelopment, which has transformed the site into a hub for health, wellbeing and recreation. Visitors can now enjoy a refurbished visitor centre and café and a brand-new outdoor activity centre with shower, changing facilities and meeting rooms. A wide range of watersports activities are now available together with miles of cycle trails and a new pump skills track for cycling enthusiasts.

The redevelopment at Llys-y-Frân, which sits on the foothills of the Preseli Mountains, is backed with £1.7 million of European Regional Development Funds through the Welsh Government. The project is part of the Welsh Government's Tourism Attractor Destination programme, led by Visit Wales, which aims to create 11 "must see destinations" across Wales. The revamped Llys-y-Frân intends to attract an estimated 100,000 tourists and outdoor enthusiasts each year – 40,000 up from previous operational years which will help boost Pembrokeshire's thriving and valuable tourism economy.

Entry to the site is free (parking charges and costs for some activities will incur a fee). Booking is essential for a number of activities which will be organised in a controlled session. For further information about Llys-y-Frân visit <https://llys-y-fran.co.uk/>

Lisvane & Llanishen reservoirs in north Cardiff

Cardiff Council approved plans to develop Lisvane & Llanishen reservoirs in Cardiff as a hub for health and wellbeing on 16th June. Plans include the development of a café and watersports centre with shower and change facilities to support a range of watersports including sailing, kayaking, canoeing and paddle boarding; the creation of circular paths around the reservoirs; conservation zones and a learning zone.

Policy

Open Water Swimming

Following the successful pilot of the 'Authorised Access to Water' policy at Llandegfedd Lake last year, two more reservoirs are being opened up for organised open water swimming in 2021 - Llyn Brenig in Denbighshire and Llys-y-Frân Lake in Pembrokeshire.

Each site is gaining accreditation as a safe open water swimming venue through Swim Wales' SAFE Cymru (Safe Aquatic Facility Endorsement) scheme. The brand-new scheme has been designed to support outdoor facility partners to provide the appropriate resources and standards to meet to ensure safe, and enjoyable, participation across Wales. We are also working closely with Swim Wales and Welsh Tri to programme a series of events and activities.

Welsh Water is part of the [Water Safety Wales Forum](#); a group of organisations working on water safety and drowning prevention in Wales. The company reminds people that *unauthorised* swimming at any of their reservoirs is prohibited and is extremely dangerous. Open Water Swimming sessions are regulated under the close supervision of our fully trained team. They only take place in strictly designated areas of the reservoir away from hidden machinery during organised, pre-booked sessions.

NRW

Promoting the 50th Anniversary of Offa's Dyke Path National Trail 2021

Rachel Parry rachel.parry@cyfoethnaturiolcymru.gov.uk

Background

The 3 Welsh National Trails (NTs), along with the Wales Coast Path (WCP) provide some of the best walking routes through Wales' finest landscapes.

We want to use the National Trail family brand, awareness and activity to better benefit the Welsh National Trails and NRW continues to strongly support the collective promotion of the NT family and brand.

National Trails are now named by Visit Wales with WCP as part of the 'wider adventure offer', 'growing the destination experience'

- Outstanding landscapes – passing through some of the most iconic areas of Wales
- Vibrant communities – benefiting communities and local economies along the trails
- Epic Adventures – developing opportunities for visitors to experience the trails and multi activity visits.

As part of the process of reviewing National Trails promotion, Natural Resources Wales commissioned Cartwright Associates to produce a strategy and action plan for the promotion of the National Trails in Wales for the period 2020 to 2025.

The action plan developed with stakeholders is being used to inform the allocation of a small enhanced budget provided by Welsh Government for promoting the Welsh Trails.

Offa's Dyke Path and Glyndwrs Way both have distinct USPs taking walkers through ancient history, unique communities and remote and diverse landscapes.

We want to use the National Trail family brand to better benefit the Welsh National Trails and to raise the profiles of GW and ODP while retaining the collective promotion of the England/Wales NT brand and family.

As with the promotion of the Wales Coast Path the Welsh National Trails are promoted as iconic, representing all that is good about Wales and a key reason to visit. National Trails promotion activity complements WCP promotion, other longer term tourism strategies currently implemented to market Wales as a tourism destination such as Visit Wales' Wales Way.

Better connection to the environment via increased participation in walking trails benefits both people and the environment. Promotional activity in relation to NTs increases well being and awareness of culture, heritage and biodiversity via for example; themed itineraries and walking festivals interpreting points of interest along the trails.

Marketing and promotion of the trails will leave a long term legacy of raised awareness of the trails as reason to visit Wales in themselves and will lead to them being a key tourism product for the future.

General National Trails Promotion

The following are examples of promotional activity underway for the National Trails

- Branding guidance - The National Trails family has recognised branding with a trademarked logo (owned jointly by NRW and Natural England) and a bilingual version for the Welsh National Trails. NRW led on updating the guidelines for use of the NT branding and logo for the National Trails family and this is now being used both in England and Wales

- Official guidebooks
- The National Trail family website www.nationaltrail.co.uk
- New Individual trail leaflets for the Welsh National Trails
- National Trails Business Toolkit - a bilingual guide has been produced for maximising opportunities for businesses along the trails. This was done in 2018 for the Wales Coast Path accompanied by a webinar to engage businesses
- Group Travel Toolkit – the toolkit encourages group travel operators to plan visits around the National Trails and Wales Coast Path, showing suggested itineraries and opportunities to engage in activities additional to walking
- Webinars have been run to promote and engage businesses with both toolkits
- Filming, photography and drone footage was commissioned for Glyndwrs Way and Offa's Dyke Path. The contract has been running to cover all seasons. The imagery will soon be available for partners to use once copyright and cataloguing is complete. New imagery was commissioned for the Wales Coast Path including the Pembrokeshire Coast Path in 2019.
- A PR company has been commissioned to work National Trail and Wales Coast Path officers to support their social media, make connections with the press, tourism and travel trade networks to highlight forthcoming activity and maintain the activity required.

Offa's Dyke Path 50th Anniversary 2021

2021 sees an exciting programme of 50th anniversary events for Offa's Dyke Path currently underway with National Trail Officers and managing authorities.

- **Offa's Dyke Path 50th Anniversary Logo**
- **Offa's Dyke Path anniversary weekend.** NRW will run a small event with Chief Executives of key ODP partners; NRW, Natural England, CADW, Powys and the Offa's Dyke Association on 9 July 2021. Numbers have had to be restricted due to the uncertainty presented by the Covid situation. The event will include a preview of an art exhibition by artist Dan Llywelyn at the reopening of the Offa's Dyke Centre in Knighton. The Offa's Dyke Association will be organising more celebratory events over the anniversary weekend
- **NRW is working with Ramblers Cymru** to organise walking festival events in the September, a virtual challenge event and associated social media activity
- **Wonders of the Border ITV series with Sean Fletcher and Rob Dingle, Offa's Dyke Path National Trail Officer** – aired in April on ITV Wales with UK wide broadcast in the summer

- **Themed short walks** commissioned as part of widening the appeal of Offa's Dyke Path and Glyndwrs Way to more audiences. The Offa's Dyke Path walks will be publicised throughout the 50th anniversary year
- **Art and Poetry celebrating Offa's Dyke Path.** We are working with artist Dan Llywelyn who is depicting various points along the trail where the artwork will be displayed. There will be an art exhibition at the Offa's Dyke Centre which is planned to run from 10th July to coincide with Offa's Dyke Path Anniversary
- **Art and poetry videos** – Dan Llywelyn has been collaborating with various Welsh poets who write and perform in English and Welsh to celebrate the trail. Dan and the poets have created short videos to be shared on social media showing Dan creating the artwork and poets reading their work
- **Art and poetry book Walking with Offa** will celebrate Offa's Dyke Path and the artistic collaboration it has inspired
- **Art and poetry interpretation boards and panel posts** will be installed at key points on the trail in the weeks leading up to the July 10th anniversary
- **National Trails Website** www.nationaltrail.co.uk is a partnership between Natural England, NRW and the National Trails in England and Wales and is a key promotion mechanism. We have recently created an Offa's Dyke Path anniversary page and a business engagement page
- **Share your memories #offasdyke50** We are encouraging people to share their memories of Offa's Dyke Path with people encouraged to share their pictures of themselves with the ODP logo which will be installed on waymarkers along the trail. The rich content provided by people and organisations sharing memories of Offa's Dyke Path through the decades will be available on Facebook and Instagram

Countryside Code

Alison Roberts Alison.Roberts@cyfoethnaturiolcymru.gov.uk

Based on the written contribution that was provided for the last NAFW meeting, Alison Roberts recently gave a presentation on the Countryside Code work to the Snowdonia National Park Authority's Ambassadors Scheme. This is available to view online [here](#).

END.