

# Wales Bathing Water Report 2014



Natural Resources Wales has taken over the functions of the Countryside Council for Wales, Environment Agency Wales and Forestry Commission Wales, as well as some functions of Welsh Government.

We will work for communities in Wales to make sure people and their homes are protected from environmental incidents like flooding and pollution. We will provide opportunities for people to learn, use and benefit from Wales' natural resources.

We will work for Wales' economy and enable the sustainable use of natural resources to support jobs & enterprise. We will help businesses and developers to understand and consider environmental impacts when they make important decisions.

We will work to maintain and improve the quality of the environment for everyone. We will help make the environment and natural resources more resilient to climate change and other pressures.

We will use our knowledge, and learn from the knowledge of others, to make Natural Resources Wales an efficient, effective and capable organisation for the people and environment of Wales.

Published by:  
Natural Resources Wales  
Cambria House  
29 Newport Road  
Cardiff  
CF24 0TP  
Phone number: 0300 065 3000  
Email: [enquiries@naturalresourceswales.gov.uk](mailto:enquiries@naturalresourceswales.gov.uk)  
[www.naturalresourceswales.gov.uk](http://www.naturalresourceswales.gov.uk)

Further copies of this report are available from:

Helena Sykes

Email:  
[helena.sykes@naturalresourceswales.gov.uk](mailto:helena.sykes@naturalresourceswales.gov.uk)

© Natural Resources Wales.

All rights reserved. This document may be reproduced with prior permission of Natural Resources Wales

# Executive Summary

Bathing waters in Wales are monitored according to European Union law to protect public health and the environment.

In Wales during the 2014 bathing season 102 designated bathing waters were tested. Of these, all 102 (100%) passed the mandatory European standard while 90 (88.2%) passed the tougher European guideline standard. This continues the pattern of improvement since 2012 which was a much wetter than average year. Rainfall affects water quality by washing pollution from urban and agricultural areas into rivers and the sea. It also causes sewage systems to spill into rivers and the sea. Sewage systems are designed to do this to prevent them becoming overwhelmed and flooding homes and businesses. Lower than average levels of sunshine in the 2012 bathing season also contributed to the dip in results as the ultra-violet light from the sun normally kills bacteria in the water.

From 2012 to 2014, we are in a transition period between two pieces of European Union legislation. The revised Bathing Water Directive (rBWD) uses standards approximately twice as strict as the current Bathing Water Directive (cBWD) and classifies waters based on four years of data instead of one. 2012 was the first year of sampling for the rBWD so the first classifications will be published in 2015. This means that 2014 is the last time the UK will be reporting results against the cBWD.

Projected classifications against the new rBWD standards have been calculated using the 2011-2014 data. Of the 102 designated bathing waters all 102 (100%) met at least the Sufficient standard, 97 (95.1%) were at least Good and 79 (77.45%) achieved the toughest of the new standards, Excellent.

In Wales we also monitor some beaches (“non-designated beaches”) that do not come under the European Union bathing water law, largely to promote tourism and gain beach awards. Of the 45 non-designated beaches monitored in the 2014 season, all 45 (100%) passed the mandatory standard with 29 (64.44%) also passing the guideline standard.

Bathing water awards are awarded on the previous season’s bathing water results, although there are many criteria other than water quality. In 2014 Wales had 34 Blue Flags. The Blue Flag is an international award which is only available to designated bathing waters. Welsh beaches also achieved 31 Green Coast Awards and 106 Seaside Awards. Green Coast Awards and Seaside Awards are available to both designated and non-designated bathing waters.

This report presents the results of the 2014 bathing water monitoring and discusses the reasons for failure for poorly performing bathing waters and improvement actions that can be taken.

# Contents

<b>1</b>	<b>Bathing Water Legislation and Standards</b>	<b>6</b>
1.1	The current Bathing Water Directive (cBWD).....	6
	Legislation.....	6
	Standards .....	6
1.2	The revised Bathing Water Directive (rBWD).....	7
	Legislation.....	7
	Standards .....	7
	Provision of information to the public.....	7
1.3	The transition period.....	8
<b>2</b>	<b>Monitoring programme for bathing waters identified under the Bathing Water Directive</b>	<b>9</b>
2.1	Location .....	9
2.2	Monitoring.....	9
	Abnormal situations .....	9
	Prediction and Discounting.....	9
	Step change.....	10
2.3	Results.....	10
	Summary table showing compliance with bathing water standards in 2014.....	10
<b>3</b>	<b>Monitoring programme for bathing waters not identified under the Bathing Water Directive</b>	<b>12</b>
3.1	History.....	12
3.2	Location .....	12
3.3	Monitoring.....	12
3.4	Results.....	13
<b>4</b>	<b>Risk of future non-compliance</b>	<b>14</b>
4.1	Risk of non-compliance against the current Directive .....	14
4.2	Risk of non-compliance against the revised Directive.....	14
<b>5</b>	<b>Reasons for failure and Improvement Actions</b>	<b>14</b>
5.1	Reasons for failure.....	14
5.2	Remedial measures required to meet long term objectives .....	15
	Revised Directive.....	15
<b>6</b>	<b>Beach awards</b>	<b>16</b>
6.1	Blue Flag Award .....	16
6.2	Green Coast Award .....	16
6.3	Seaside Award.....	16

Figure 1: Location and compliance of EC identified bathing waters in 2014.....	18
Figure 2: Location and compliance of non-EC identified bathing waters in 2014 .....	19
Table 1: EC identified bathing waters: compliance with Imperative and Guideline standards in 2014 for E. coli and intestinal enterococci .....	20
Table 2: EC identified bathing waters: overall compliance with the Imperative standard 1992 to 2014.....	24
Chart 1: EC identified bathing waters: overall compliance with the Imperative standard 1992 to 2014.....	28
Table 3: EC identified bathing waters: overall compliance with the Guideline standard 1992 to 2014.....	29
Chart 2: EC identified bathing waters: overall compliance with the Guideline standard 1992 to 2014.....	33
Table 4: Non-EC identified bathing waters: compliance with Imperative and Guideline standards in 2014 for E. coli and intestinal enterococci .....	34
Table 5: Non-EC identified bathing waters: overall compliance with the Imperative standard 1998 to 2014.....	36
Chart 3: Non-EC identified bathing waters: overall compliance with the Imperative standard 1998 to 2014.....	41
Table 6: Non-EC identified bathing waters: overall compliance with the Guideline standard 1998 to 2014.....	42
Chart 4: Non-EC identified bathing waters: overall compliance with the Guideline standard 1998 to 2014.....	47
Table 7: EC identified bathing waters: Reasons for failure and improvement actions for bathing waters at >0% risk of future non-compliance with the Sufficient standard of the rBWD at the end of the 2014 bathing season, based on historical sampling data. ....	48
Table 8: EC identified bathing waters: Risk of failure against the revised Bathing Water Directive based on historical sampling data. ....	52
Table 9: EC identified bathing waters: projected revised Bathing Water Directive classifications using 2011 to 2014 data, compared to previous years. ....	58
Table 10: Blue Flag award beaches 1988 to 2014.....	63
Chart 5: Blue Flag awards 1995 to 2014.....	67
Table 11: Green Coast Award beaches 2014.....	68
Chart 6: Green Coast Awards 1999 to 2014 .....	69
Table 12: Non-EC identified bathing waters: indicative projected revised Bathing Water Directive classifications using 2011 to 2014 data.....	70
Table 13: Seaside Award beaches 2014.....	72
Appendix 1: Criteria for assessing compliance with current Bathing Water Directive (cBWD) standards	75
Appendix 2: Criteria for assessing compliance with the revised Bathing Water Directive (rBWD) standards	76
Appendix 3: In-situ determinands	77
Appendix 4: EC identified bathing water sample point details 2014	79
Appendix 5: The Monitoring Calendar	81
Appendix 6: Abnormal Weather Waivers and Abnormal Situations	82
Appendix 7: Non-EC identified bathing water sample point details 2014	83

# 1 Bathing Water Legislation and Standards

Bathing water quality is monitored to protect human health and the environment. The countries of the European Union decide how monitoring should be carried out and what the bathing water standards should be, set out in pieces of European legislation called Directives. National governments are responsible for interpreting the Directives and translating them into national bathing water regulations. They are also accountable for compliance with the terms of the Directives. We are currently in a transition period between two European Commission (EC) bathing water directives.

## 1.1 The current Bathing Water Directive (cBWD)

### Legislation

The EC Bathing Water Directive (76/160/EEC) was intended primarily to safeguard public health and the environment by reducing pollution of bathing waters and protecting bathing waters against further deterioration.

The Bathing Waters (Classification) Regulations 1991 were published as a statutory instrument on 9th August 1991, bringing the regulations into UK law. The "Notice" and "Directions" were received in 1992.

Under the Environment Act 1995, the Environment Agency (EA) inherited the responsibility for carrying out the necessary monitoring programmes in relation to certain water-related Directives, including the Bathing Water Directive, in England and Wales. In 2013 these responsibilities passed to Natural Resources Wales (NRW) for Wales.

When Directive 76/160/EEC was first adopted, only a limited number of bathing waters were identified, or designated, by the UK Government. A large number of bathing waters have since been added to the initial list and all these are included in the government's report to the EC. If bathing waters are not included in that report then they do not come within the terms of the Directive. Applications for designation are assessed by Welsh Government and must show evidence of bathers at the site.

The results from these monitoring programmes in Wales are submitted to Welsh Government and the Department for Environment, Food and Rural Affairs (Defra). Welsh Government and Defra are responsible for implementing European Directives in England and Wales, and so only they can assess 'compliance' or otherwise with the Directives.

### Standards

The EC Bathing Water Directive (76/160/EEC) was in operation in its full form until the end of the 2011 season. The cBWD specifies a range of water quality standards that should be achieved in identified bathing waters and indicates the required monitoring frequency. These standards fall into two categories; mandatory (I [i.e. imperative]) and guideline (G) standards.

Until 2011 three microbiological parameters were sampled: faecal coliforms, total coliforms and faecal streptococci. The I standards for faecal coliforms and total coliforms were used by the government as the basis for determining UK compliance with the Directive. The details of the requirements for compliance with the I and G standards are given in [Appendix 1](#). There are additional microbiological I standards for the occurrence of salmonella and enteroviruses and I standards for various physico-chemical parameters. There is also a guideline standard for faecal streptococci. Wales has been granted a derogation for transparency at all its bathing waters from 1991.

Compliance with the G standards is not mandatory but the Directive states that member states should "endeavour" to observe them as guidelines.

## 1.2 The revised Bathing Water Directive (rBWD)

### Legislation

The revised Bathing Water Directive (2006/7/EC) entered into European Union Law on 24th March 2006 and is due to replace the current Bathing Water Directive (76/160/EEC). The revised Bathing Water Directive (rBWD) was translated into UK law on 14th May 2008 and will be fully operational by 2015. The Government has set up a Policy Lead Group to introduce regulations and steer implementation of the Directive.

The rBWD makes changes to the monitoring and classification of bathing waters, the management of bathing water quality and the provision of information to the public. The rBWD requires close co-ordination with, and complements, the Water Framework Directive. The microbiological standards are stricter than those in the current Directive.

### Standards

Sampling for the revised Bathing Water Directive began in 2012. Bathing water classifications under the rBWD are based on four years of data so the first official classification will be at the end of the 2015 season. The rBWD standards ([Appendix 2](#)) use two microbiological parameters - Escherichia coli (E. coli) and intestinal enterococci – and are to be based on 95<sup>th</sup> and 90<sup>th</sup> percentile values, which are calculated from four years of sampling data. Unlike the cBWD, the rBWD has different standards for coastal and inland waters.

There will be 4 classes:

Excellent – approximately twice as stringent as the cBWD guideline standard

Good – similar to the cBWD guideline standard

Sufficient – approximately twice as strict as the cBWD mandatory standard

Poor – non-compliant; fails to meet the Sufficient, pass, standard.

An objective is set in the Directive for all bathing waters to achieve Sufficient status by 2015.

### Provision of information to the public

In 2009 the process of gathering information for the Bathing Water profiles required under Article 6 of the revised Bathing Water Directive (2006/7/EC) began. Observational determinands are recorded each time a sample is taken, to

gather information about the bathing water ([Appendix 3](#)). The Bathing Water profiles were published online on 24<sup>th</sup> March 2011 in accordance with the Directive. The information gathered for the profiles was also used on signage at the beach, which was required to be in place before the 2012 season. The information will also be used in the periodic reviews of the profiles required by the Directive: every two years for Poor bathing waters, every three years for Sufficient and every four years for Good.

### 1.3 The transition period

There is a three year transition period between the current and revised Directives from 2012 - 2014. This is because an official rBWD classification cannot be calculated until the new parameters, E. coli and intestinal enterococci, have been sampled for four bathing seasons, which means the first classification will be at the end of the 2015 season. In the meantime Welsh Government and Defra must continue to report to compliance against the Imperative and Guideline standards of the cBWD to Europe using the sample data taken for the rBWD.

The Imperative standard will assess E. coli against the same microbiological I standard as previously used for faecal coliforms. The Guideline standard will use E. coli in place of faecal coliforms, and intestinal enterococci in place of faecal streptococci, assessed against the same microbiological standards as previously used ([Appendix 1](#)). There is no new parameter replacing total coliforms so these standards are dropped from 2012 onwards.

Prior to 2012 there were two Guideline assessments – EC Guideline and UK Guideline. EC Guideline was used for reporting compliance with the cBWD to Europe and UK Guideline was used as the water quality standard for Blue Flag and Green Coast awards. EC Guideline took into account only faecal and total coliforms. UK Guideline, took faecal streptococci into account as well. The Guideline standard we are reporting from 2012-2014 is closer to the stricter UK Guideline standard.

Salmonella monitoring and monitoring for the physico-chemical parameters shown in Appendix 1 were also dropped after the cBWD was rescinded following the 2011 season.

Until we have the first official rBWD classifications in 2015, projected classifications, for years leading up to 2015, are necessary as part of the procedures for checking for no deterioration and deciding when remedial action is required. For the 2014 reporting year, four years of sampling data (2011-2014) at identified bathing waters has been assessed against the rBWD standards to produce a projected classification. For the 2011 data, faecal coliforms results were used as a surrogate for E. coli and faecal streptococci were used as a surrogate for intestinal enterococci.



# 2 Monitoring programme for bathing waters identified under the Bathing Water Directive

## 2.1 Location

One hundred and two bathing waters in Wales are currently identified by the UK government as falling within the scope of the Directive. These EC identified bathing waters are shown on [Figure 1](#) and listed in [Appendix 4](#).

Two new bathing waters were designated for the 2014 season: Rhyl East in Denbighshire and Llyn Padarn in Gwynedd. Llyn Padarn is a lake so is the only fresh water bathing water in Wales (as Marine Lake, Rhyl is not legally an inland water because it is filled with sea water through a sluice). No bathing waters were dedesignated.

Borth was sampled at a temporary sample point in 2014 due to flood defence engineering works. It was the same temporary sample point that was used in 2011 during the first phase of the works and again in 2013. This was in agreement with Welsh Government because bathers were directed to the part of the beach with the temporary sample point while the part of the beach with the usual sample point was closed.

The government requires that these identified bathing waters are monitored in accordance with the requirements of the Bathing Water Directive and the data is reported to Welsh Government and Defra during October of each year. This report summarises the results of the monitoring carried out during the 2014 bathing season.

## 2.2 Monitoring

The Welsh Government/Defra identified bathing season runs from 15<sup>th</sup> May to 30<sup>th</sup> September each year. Sampling begins from 1<sup>st</sup> May as each bathing water has one pre-season sample taken. There may also be a pre-season inspection to identify any issues if resources allow. E. coli and intestinal enterococci are currently sampled 20 times per season, including the pre-season sample, four times as many samples as required by the rBWD.

### Abnormal situations

Monitoring must follow a timetable, the monitoring calendar, determined before the start of the season ([Appendix 5](#)). The monitoring calendar may be suspended if an event occurs with an expected return period of one in four years or longer (an Abnormal Situation) as long as signs are placed at the beach to inform the public and a sample is taken immediately after the event to confirm the event is over before the monitoring calendar is reinstated ([Appendix 6](#)).

### Prediction and Discounting

At some bathing waters short term pollution may be predicted by models. Beach operators then update a sign at the bathing water stating whether good or poor water quality is predicted that day. The prediction information is also shared

online. If the model has predicted poor quality, the public have been informed and a confirmation sample shows that the pollution lasted less than 72 hours then a scheduled bathing water sample taken that day may be discounted from the four year dataset, up to a maximum of 15% of samples and as long as improvement works are also taking place at the bathing water.

In 2014 a short term pollution prediction model was run at thirteen beaches in Wales. Twelve of these were included in the Environment Agency's model based on rainfall trigger levels: Aberdaron, Aberdyfi, Aberystwyth South, Cemaes, Criccieth, Llandudno West, Llanfairfechan, Llangrannog, Newport, Penmaenmawr, Poppit and Rhyl. Swansea Bay has its own more complex model funded through the Smart Coasts, Sustainable Communities project. Not all the bathing waters involved had any predictions of poor water quality in 2014 and of those that had predictions they only coincided with a sample at about half of bathing waters as each bathing water is sampled roughly once a week and predictions were run every day.

At the end of the season Welsh Government decided to discount two samples from Swansea Bay which met all the criteria. Both these samples were replaced by samples taken after the prediction of poor water quality had ended, which is an optional provision in the Directive.

#### Step change

Major changes at bathing waters such as sewerage improvements may mean that data from before the changes are no longer representative of the current bathing water quality. The rBWD allows data from before such changes to be excluded from classification calculations under a provision commonly known as step change.

In 2014 Welsh Government chose to apply step change to four bathing waters in Wales after the 2012 season: Criccieth, Llandudno West, Rhyl and Prestatyn. All had major sewerage infrastructure works between the 2012 and 2013 seasons such as the construction of new storm tanks and all showed evidence that the water quality before the improvements did not represent the current situation. This means that for those four bathing waters their rBWD classifications are calculated using only two years of sampling data (2013-2014) instead of the usual four years.

### 2.3 Results

In 2014, all 102 (100%) of beaches passed the mandatory European standard. This is compared with 99% compliance in 2013. EC identified beaches' performance against guideline standards was very similar to 2013: 90 out of 102 beaches (88.2%) met the standards in 2014 compared to 89% in 2013.

Summary table showing compliance with bathing water standards in 2014

Bathing Waters	Number of Bathing Waters	Number Complying with I Standard	Percentage I Compliance	Number Complying with G Standard	Percentage G Compliance
EC designated	102	102	100.0%	90	88.2%
Non-EC designated	45	45	100.0%	29	64.4%

[Table 1](#) shows compliance of EC identified bathing waters with the E. coli I and G standards, and with intestinal enterococci G standards as reported by Welsh Government and Defra in 2014. The number of samples taken at each beach, the number of exceedances against I and G standards and the compliance are given for each determinand at each beach, as well as the overall compliance of the beach.

[Table 2](#) shows compliance of EC identified bathing waters with I standards for faecal and total coliforms from 1992 to 2011 and E. coli for 2012 onwards. This information is illustrated in [Chart 1](#).

[Table 3](#) shows compliance of identified bathing waters with UK Guideline standards for faecal and total coliforms, and faecal streptococci, from 1992 to 2011 and for E. coli and intestinal enterococci for 2012 onwards. This was the water quality standard required for [Blue Flag and Green Coast beach awards](#) until 2012. [Chart 2](#) illustrates this information.

# 3 Monitoring programme for bathing waters not identified under the Bathing Water Directive

## 3.1 History

A number of non-identified bathing (non-EC) waters have, in the past, been routinely monitored by one of NRW and the EA's predecessor organisations, the National Rivers Authority (NRA). The NRA ceased all non-EC bathing water monitoring from 1994 because it considered that it had sufficient information to characterise these waters. The exceptions to this are any bathing waters nominated by local councils for consideration for EC Directive 'identification'. In Wales an initiative, co-ordinated by the Environment Agency and involving Welsh Government, Visit Wales (part of Welsh Government that replaced the Wales Tourist Board), Keep Wales Tidy (KWT), Dŵr Cymru Welsh Water (DCWW) and the coastal local authorities, was set up to collect the necessary data to enable local councils to continue to apply for the various bathing beach awards at non-EC bathing waters and to help target investigations and actions to reduce diffuse pollution. The results of this initiative are included in this report. Non-EC bathing waters cannot officially be said to comply, or fail to comply, with the Directive as they are not subject to it. The term "compliance" has been used throughout this report for convenience, as non-EC bathing waters are assessed against the same standards given in the Directive as part of the initiative described above.

## 3.2 Location

The non-identified bathing waters monitored by local authorities through the initiative are shown in [Figure 2](#) and listed in [Appendix 7](#).

## 3.3 Monitoring

In 2014, the initiative was funded by Green Sea Partnership members (Natural Resources Wales, Visit Wales, Local Authorities and Keep Wales Tidy). Local authorities carried out the sampling to NRW specifications. Samples from South Wales (Pembrokeshire and Ceredigion) were analysed at NRW's Llanelli laboratory and samples from North Wales (Gwynedd, Anglesey, Conwy, Denbighshire and Flintshire) were analysed at the Marine Biological and Chemical Consultants (MBCC) lab on Anglesey, in both cases under contract.

Swansea Council do not take part in this initiative although they collect samples and have them analysed at Carmarthen Public Health Laboratory. Swansea's samples have been analysed for the determinands of the revised Bathing Water Directive since 2006. All the other identified and non-identified beaches only started in 2012. This means that for 2006-2011 there are no results for Swansea comparable with any other beaches for those years as they did not sample total coliforms – therefore no results for Swansea's non-designated beaches from 2006-2011 are presented in this report. In 2012 Imperative and Guideline standards without total coliforms were introduced, allowing Swansea's non-EC

beaches to be assessed against these standards, like all the other beaches, as well as the rBWD standards.

A total of 45 non-identified bathing waters in Wales were monitored and assessed during 2014. These results have been provided to Welsh Government and the Green Sea Partnership.

### **3.4 Results**

[Table 4](#) shows compliance of the non-EC bathing waters with the I and G standards, in 2014. The number of samples taken at each beach, the number of failures against I and G standards and the compliance are given for each determinand at each beach, as well as the overall compliance of the beach.

[Table 5](#) and [Table 6](#) show historical compliance of non-EC identified bathing waters with I and G standards respectively. Table 5 shows compliance with I standards for faecal and total coliforms from 1998 to 2011 and E. coli for 2012 onwards. Table 6 shows compliance with UK G standards for faecal and total coliforms and faecal streptococci from 1998 to 2011, and E. coli and intestinal enterococci for 2012 onwards. This information is illustrated in [Chart 3](#) and [Chart 4](#).

# 4 Risk of future non-compliance

## 4.1 Risk of non-compliance against the current Directive

NRW used to calculate a risk of failure against the current Bathing Water Directive. However, as 2014 is the final year of the cBWD there are no future years so there is no longer any need to calculate a risk of failure.

## 4.2 Risk of non-compliance against the revised Directive

The risk of failure against the revised Bathing Water Directive has been calculated based on the last four years of sampling data. [Table 7](#) shows the bathing waters with an above 0% risk of failing the Sufficient standard of the rBWD i.e. the legal minimum, and shows the sources of pollution identified and the actions being taken to improve the bathing water's risk of non-compliance. In general the same bathing waters that struggled to meet the cBWD are the ones with an above 0% risk of failing to meet the Sufficient standards of the rBWD so work at these bathing waters has been ongoing during the transition between the two Directives.

The risks against the Sufficient, Good and Excellent standards are calculated for E. coli and Intestinal Enterococci and the results are presented in [Table 8](#). Partners such as local authorities are interested in the risks of failing the Excellent classification because of the impact on Blue Flags and Green Coast Awards.

Annual compliance is considered an unreliable indication of trends. Variation in compliance from year to year is expected and does not necessarily indicate genuine improvement or deterioration, owing to the statistical limitations of using such a small data set. There will always be some beaches that change their status as a result of marginal failures or passes. The rBWD goes some way to mitigating these effects as classifications are based on four years of sampling data rather than just one as in the cBWD.

# 5 Reasons for failure and Improvement Actions

## 5.1 Reasons for failure

No designated bathing waters in Wales failed either the current or revised Directives in 2014. However work to improve bathing water quality is ongoing to improve standards in general in order to better protect public health and to meet the better classifications of the rBWD, Good and Excellent.

In wet years large amounts of rainwater affect bathing water quality by causing storm sewage systems to release diluted sewage into rivers to protect homes and businesses from flooding. Rainwater also washes animal waste from urban and rural areas into surface water drains and rivers. Poor water quality can also be caused by misconnected plumbing where foul water such as from bathrooms or washing machines enters the surface water drains, and from poorly maintained

cesspits and septic tanks. In years with below average sunshine water quality is affected as the sun's ultra-violet (UV) rays kill fewer of the bacteria found in the sea.

The regional climate summaries available online from the Met Office show that in summer 2014 Wales had only 82% of the average rainfall for the time of year but 125% of the sunshine. This is the opposite pattern to 2012 when Wales had 170% of the long term average rainfall but only 80% of the long term average sunshine. It would therefore be expected that 2014's results would be better than 2012's, and this proved to be the case.

This is a general trend for Wales as a whole and local variations will affect different bathing waters.

## **5.2 Remedial measures required to meet long term objectives**

### **Revised Directive**

The improvements necessary to achieve the mandatory standard of the cBWD were one of the main drivers behind DCWW's planned investment programme in recent years but this Directive is now obsolete and the priority now is for EC designated bathing waters to meet the Sufficient standard of the rBWD. This is now a major driver for improvement actions. [Table 9](#) shows that at the end of the 2014 season 100% of designated bathing waters in Wales met the Sufficient standard of the rBWD. This is the first year Wales has had 100% compliance.

It is clear that considerable progress has been made, but it is also now clear that in some cases non-water company discharges, riverine and other diffuse inputs are causing problems for beach compliance. Natural Resources Wales is carrying out work to identify and reduce diffuse pollution affecting bathing waters, supported by the Welsh Government. Further information on improvement actions for the riskiest beaches can be found in [Table 7](#). In general the same beaches that performed poorly against the cBWD are also the worst performing against the rBWD. This means that there is no need to change the beaches targeted for improvement actions to bring beaches into compliance against the rBWD unless any newly designated bathing waters need to be added.

The Green Sea Partnership which drove forward many improvements under the cBWD continues to do so under the rBWD. The overall objective of the Green Sea Partnership is to work together to improve the coastal environment including water quality around the Welsh coast. The Green Sea Initiative is co-ordinated by Visit Wales and comprises membership by bodies with an interest in the quality of the coastal environment around Wales. This includes Local Authorities, industry (including the water company Dŵr Cymru), local environmental groups, charities such as the RNLI and Keep Wales Tidy, and Natural Resources Wales, along with several others. The organisation was formed in 1995 and has, as one of its objectives, to improve guideline compliance by tackling the issues of diffuse pollution. This will be achieved through continued work with local communities and local Green Sea groups.

# 6 Beach awards

The monitoring data for the EC Bathing Water Directives can be used by local authorities to gain beach awards the following season. There are many award criteria other than water quality and there is also an award application fee. This means that not all local authorities whose bathing waters meet the water quality criteria choose to apply for awards.

## 6.1 Blue Flag Award

In Europe, the Blue Flag scheme is run by the Foundation of Environmental Education (FEE). It is administered in Wales by the charity Keep Wales Tidy (KWT). KWT was a part of the Environmental Campaigns (ENCAMS) group, but devolved to become a Wales-only organisation in April 2005. Blue Flags are awarded to those EC identified beaches where an application has been made by the local authority, or another interested party such as a private beach operator, and which meet the strict water quality and land-based requirements of the award scheme.

The 2014 season was the second year that Blue Flags have used the rBWD standards. To meet the new water quality requirements a beach had to be classified Excellent at the end of the 2013 season. The new Blue Flag standards from 2013 onwards are approximately twice as strict as the standards up until 2012. In Wales 34 Blue Flags were awarded in 2014 compared to 33 in 2013. These are listed in [Table 10](#) along with a history of Blue Flag awards in Wales since the start of the scheme. [Chart 5](#) shows the trend in the number of Blue Flag beaches in Wales from 1995 to 2014.

## 6.2 Green Coast Award

The Green Coast Award was piloted at nine beaches throughout Wales during 1998 and the first awards were made in 1999. It has been developed by the Green Sea Partnership, with the aim “to acknowledge those beaches which meet guideline water quality and are prized for their natural, unspoiled environment”. It is coordinated by KWT. Both EC identified and non-EC beaches are eligible to apply for these awards. The water quality requirements are exactly the same as for a Blue Flag, so they also became twice as strict in 2013 as they were previously. In 2014, 31 beaches in Wales were awarded the Green Coast Award, compared to 35 in 2013. These are listed in [Table 11](#). The trend in the number of Green Coast Award beaches in Wales is shown on [Chart 6](#).

As both identified and non-identified beaches can apply for Green Coast Awards rBWD classifications for non-identified beaches have been calculated and are shown in [Table 12](#).

## 6.3 Seaside Award

The Seaside Award scheme was introduced in 1992. Like the other awards it is administered in Wales by KWT. Both EC identified and non-EC beaches are eligible to apply for these awards. There are two categories of award – resort and rural – which have different land-based criteria depending on whether the beach is part of a managed tourist resort or is a smaller beach with limited facilities. A beach can switch between resort and rural awards each season depending on the facilities provided that year, such as lifeguards.



Water quality for both resort and rural Seaside Awards is judged on the results of the analyses of samples taken during the previous bathing season. In order to be eligible for a Seaside Award, the water quality must meet at least the mandatory standard of the current Directive. From 2012 onwards, when sampling for the rBWD began, this standard has been for E. coli only.

In 2014, 106 bathing waters in Wales were awarded Seaside Awards: 51 resort and 55 rural. These are listed in [Table 13](#).

Figure 1: Location and compliance of EC identified bathing waters in 2014

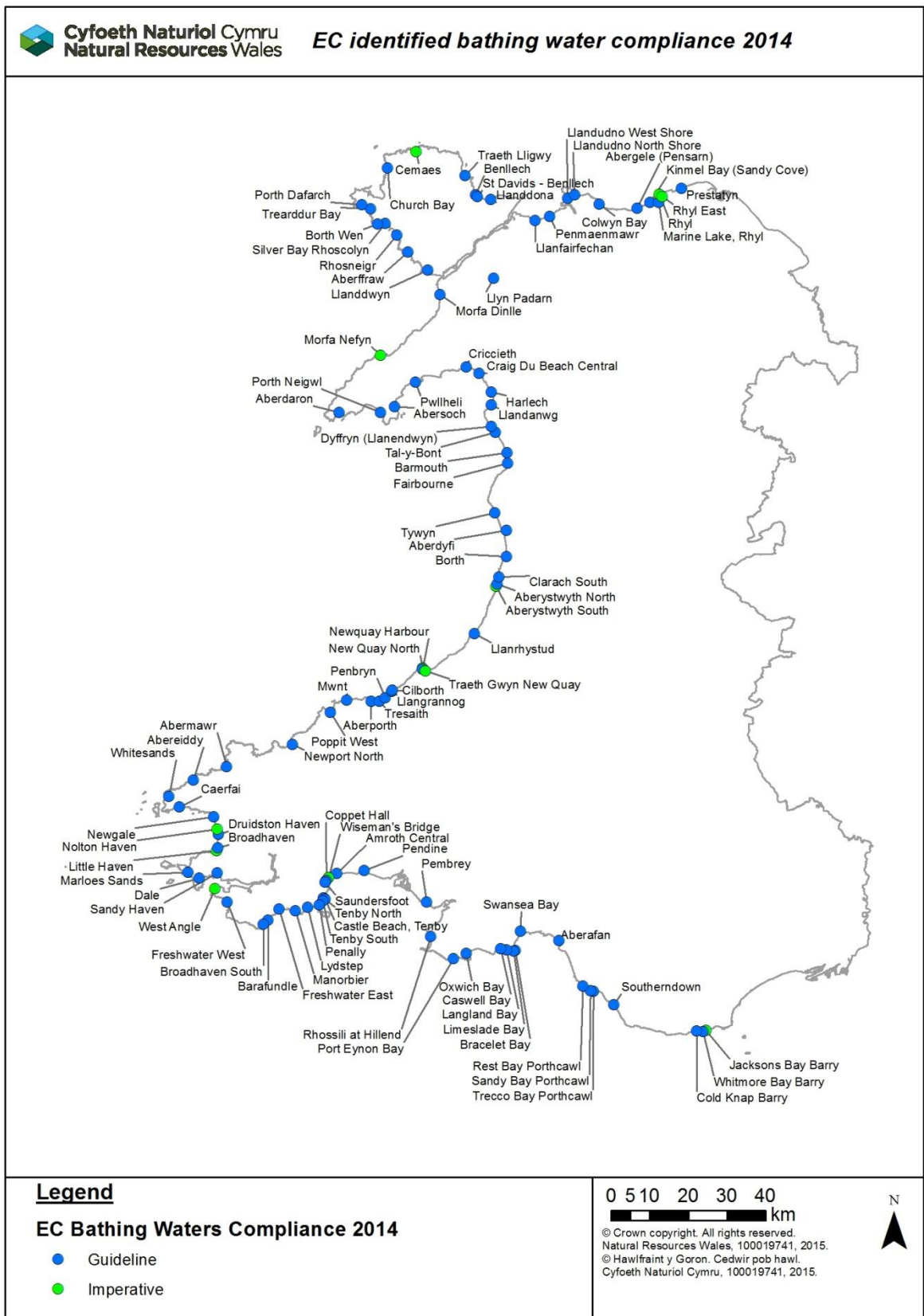


Figure 2: Location and compliance of non-EC identified bathing waters in 2014

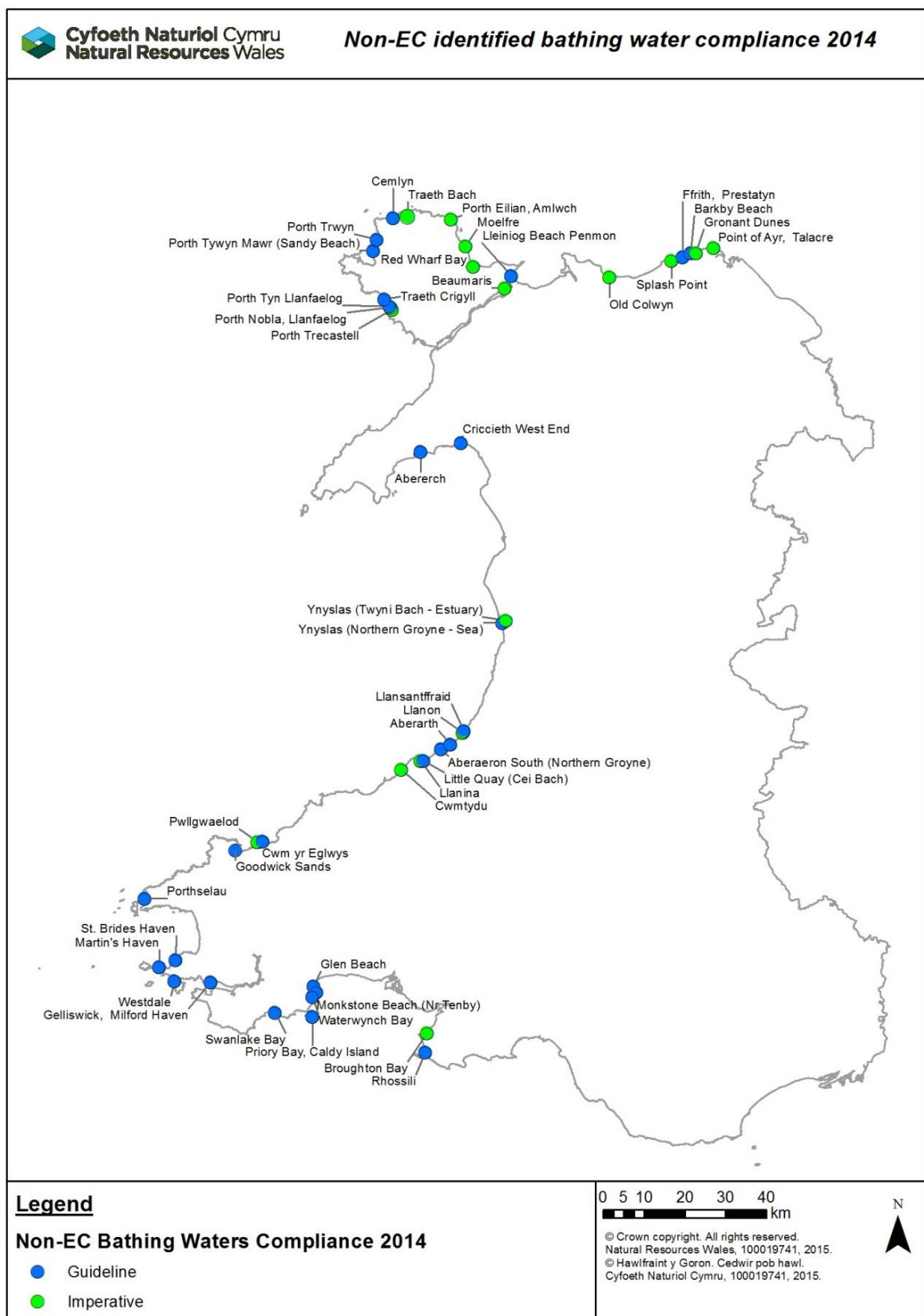


Table 1: EC identified bathing waters: compliance with Imperative and Guideline standards in 2014 for E. coli and intestinal enterococci.

Bathing Water	E. coli				Intestinal enterococci			Overall Compliance
	No. Samples	No. Fail "I"	No. fail "G"	Compliance	No. Samples	No. Fail "G"	Compliance	
Jackson's Bay Barry Island	19	0	4	I	19	2	I	Imperative
Whitmore Bay Barry Island	19	0	2	G	19	1	G	Guideline
Cold Knap Barry	19	0	1	G	19	0	G	Guideline
Southerndown	20	0	2	G	20	2	G	Guideline
Trecco Bay Porthcawl	20	0	2	G	20	0	G	Guideline
Sandy Bay Porthcawl	20	0	1	G	20	0	G	Guideline
Rest Bay Porthcawl	20	0	0	G	20	0	G	Guideline
Aberafan	20	0	3	G	20	1	G	Guideline
Swansea Bay	20	0	3	G	20	1	G	Guideline
Bracelet Bay	20	0	0	G	20	0	G	Guideline
Limeslade Bay	20	1	2	G	20	2	G	Guideline
Langland Bay	20	0	0	G	20	0	G	Guideline
Caswell Bay	20	0	0	G	20	0	G	Guideline
Oxwich Bay	20	0	2	G	20	1	G	Guideline
Port Eynon Bay	20	0	1	G	20	1	G	Guideline
Rhossili	20	0	0	G	20	0	G	Guideline
Pembrey	20	0	1	G	20	0	G	Guideline
Pendine	20	0	2	G	20	0	G	Guideline
Amroth Central	20	0	1	G	20	0	G	Guideline
Wiseman's Bridge	20	0	2	G	20	3	I	Imperative
Coppet Hall	20	0	0	G	20	0	G	Guideline
Saundersfoot	20	0	0	G	20	0	G	Guideline
Tenby North	20	0	1	G	20	1	G	Guideline
Castle Beach, Tenby	20	0	0	G	20	1	G	Guideline
Tenby South	20	0	2	G	20	1	G	Guideline
Penally	20	0	0	G	20	1	G	Guideline
Lydstep	20	0	0	G	20	1	G	Guideline
Manorbier	20	0	0	G	20	0	G	Guideline
Freshwater East	20	0	0	G	20	0	G	Guideline
Barafundle	20	0	0	G	20	0	G	Guideline
Broad Haven (South)	20	0	0	G	20	1	G	Guideline
Freshwater West	20	0	1	G	20	1	G	Guideline

Bathing Water	E. coli				Intestinal enterococci			Overall Compliance
	No. Samples	No. Fail "I"	No. fail "G"	Compliance	No. Samples	No. Fail "G"	Compliance	
West Angle	20	0	2	G	20	3	I	Imperative
Sandy Haven	20	1	2	G	20	2	G	Guideline
Dale	20	0	2	G	20	1	G	Guideline
Marloes Sands	20	0	0	G	20	0	G	Guideline
Little Haven	20	0	3	G	20	4	I	Imperative
Broad Haven (Central)	20	1	2	G	20	2	G	Guideline
Druidston Haven	20	0	0	G	20	1	G	Guideline
Nolton Haven	20	1	2	G	20	4	I	Imperative
Newgale	20	0	0	G	20	1	G	Guideline
Caerfai	16	0	0	G	16	0	G	Guideline
Whitesands	20	0	0	G	20	0	G	Guideline
Abereddy	20	0	0	G	20	0	G	Guideline
Abermawr	20	0	0	G	20	0	G	Guideline
Newport North	20	0	0	G	20	0	G	Guideline
Poppit West	20	0	1	G	20	0	G	Guideline
Mwnt	20	0	1	G	20	0	G	Guideline
Aberporth	20	1	2	G	20	2	G	Guideline
Tresaith	20	0	1	G	20	0	G	Guideline
Penbryn	20	0	2	G	20	2	G	Guideline
Llangrannog	20	0	3	G	20	0	G	Guideline
Cilborth	20	0	0	G	20	0	G	Guideline
New Quay North	20	0	3	G	20	4	I	Imperative
New Quay Harbour	20	0	2	G	20	2	G	Guideline
Traeth Gwyn New Quay	20	0	3	G	20	3	I	Imperative
Llanrhystud	20	0	1	G	20	0	G	Guideline
Aberystwyth South	20	0	3	G	20	3	I	Imperative
Aberystwyth North	20	0	1	G	20	1	G	Guideline
Clarach South	20	0	1	G	20	1	G	Guideline
Borth	20	0	1	G	20	0	G	Guideline
Aberdyfi	20	0	3	G	20	1	I	Guideline
Tywyn	20	0	2	G	20	1	G	Guideline
Fairbourne	20	0	2	G	20	1	G	Guideline
Barmouth	20	0	0	G	20	0	G	Guideline
Tal-y-Bont	20	0	0	G	20	0	G	Guideline

Bathing Water	E. coli				Intestinal enterococci			Overall Compliance
	No. Samples	No. Fail "I"	No. fail "G"	Compliance	No. Samples	No. Fail "G"	Compliance	
Dyffryn (Llanendwyn)	20	0	0	G	20	0	G	Guideline
Llandanwg	20	0	1	G	20	1	G	Guideline
Harlech	20	0	2	G	20	0	G	Guideline
Craig Du Beach Central	20	0	1	G	20	1	G	Guideline
Criccieth	20	0	4	G	20	2	G	Guideline
Pwllheli	20	0	0	G	20	0	G	Guideline
Abersoch	20	0	1	G	20	1	G	Guideline
Porth Neigwl	20	0	0	G	20	0	G	Guideline
Aberdaron	20	0	0	G	20	0	G	Guideline
Morfa Nefyn	20	1	3	G	20	3	I	Imperative
Morfa Dinlle	20	0	0	G	20	1	G	Guideline
Llyn Padarn	20	0	0	G	20	0	G	Guideline
Llanddwyn	20	0	1	G	20	0	G	Guideline
Aberffraw	20	0	2	G	20	1	G	Guideline
Rhosneigr	20	0	0	G	20	0	G	Guideline
Silver Bay Rhoscolyn	20	1	2	G	20	2	G	Guideline
Borth Wen	20	1	1	G	20	1	G	Guideline
Trearddur Bay	20	0	0	G	20	1	G	Guideline
Porth Dafarch	20	0	1	G	20	2	G	Guideline
Church Bay	20	0	0	G	20	0	G	Guideline
Cemaes	20	0	8	I	20	3	I	Imperative
Traeth Lligwy	20	0	3	G	20	1	G	Guideline
Benllech	20	0	1	G	20	1	G	Guideline
St Davids - Benllech	20	0	0	G	20	0	G	Guideline
Llanddona	20	0	1	G	20	1	G	Guideline
Llanfairfechan	20	0	2	G	20	1	G	Guideline
Penmaenmawr	20	0	1	G	20	0	G	Guideline
Llandudno West Shore	20	0	0	G	20	0	G	Guideline
Llandudno North Shore	20	0	1	G	20	2	G	Guideline
Colwyn Bay	20	0	3	G	20	1	G	Guideline
Abergele (Pensarn)	20	0	3	G	20	2	G	Guideline
Kinmel Bay (Sandy Cove)	20	0	3	G	20	2	G	Guideline
Marine Lake, Rhyl	20	0	0	G	20	0	G	Guideline
Rhyl	20	0	4	G	20	3	I	Imperative

Bathing Water	E. coli				Intestinal enterococci			Overall Compliance
	No. Samples	No. Fail "I"	No. fail "G"	Compliance	No. Samples	No. Fail "G"	Compliance	
Rhyl East	20	0	5	I	20	2	G	<b>Imperative</b>
Prestatyn	20	0	2	G	20	2	G	<b>Guideline</b>

<b>Number of bathing waters</b>	<b>102</b>
<b>Number failing I</b>	<b>0</b>
<b>Number passing I</b>	<b>102</b>
<b>Number passing G</b>	<b>90</b>

Table 2: EC identified bathing waters: overall compliance with the Imperative standard 1992 to 2014.

For 1992-2011 the Imperative standard was for faecal and total coliforms; for 2012 onwards, E. coli. P= Pass F = Fail

Bathing Water	Year																							
	1992	1993	1994	1995	1996	1997	1998	1999	2000	2001	2002	2003	2004	2005	2006	2007	2008	2009	2010	2011	2012	2013	2014	
Jackson's Bay Barry Island	F	P	F	P	F	P	P	P	P	P	P	P	P	P	P	P	P	P	P	P	P	P	P	
Whitmore Bay Barry Island	F	P	F	P	P	P	P	P	P	P	P	P	P	P	P	P	P	P	P	P	P	P	P	
Cold Knap Barry	P	P	P	P	P	P	P	P	P	P	P	P	P	P	P	P	P	P	P	P	P	P	P	
Southerndown	P	P	P	P	P	F	P	P	P	P	P	P	P	P	P	P	P	P	P	P	P	P	P	
Trecco Bay Porthcawl	P	P	P	P	P	P	P	P	P	P	P	P	P	P	P	P	P	P	P	P	P	P	P	
Sandy Bay Porthcawl	P	P	P	P	P	P	P	P	P	P	P	P	P	P	P	P	P	P	P	P	P	P	P	
Rest Bay Porthcawl	P	P	P	P	P	P	P	P	P	P	P	P	P	P	P	P	P	P	P	P	P	P	P	
Aberafan	P	P	P	P	P	P	P	P	P	P	P	P	P	P	F	P	P	P	P	P	P	P	P	
Swansea Bay	F	F	P	F	F	F	F	P	P	P	P	P	P	P	P	P	P	P	P	P	P	P	P	
Bracelet Bay	P	P	P	P	P	P	P	P	P	P	P	P	P	P	P	P	P	P	P	P	P	P	P	
Limeslade Bay	P	P	F	P	P	F	P	P	P	P	P	P	P	P	P	P	P	P	P	P	P	P	P	
Langland Bay	P	F	P	P	P	P	P	P	P	P	P	P	P	P	P	P	P	P	P	P	P	P	P	
Caswell Bay	F	P	P	P	P	P	P	P	P	P	P	P	P	P	P	P	P	P	P	P	P	P	P	
Oxwich Bay	P	P	P	P	P	P	P	P	P	P	P	P	P	P	P	P	P	P	P	P	P	P	P	
Port Eynon Bay	P	P	P	P	P	P	P	P	P	P	P	P	P	P	P	P	P	P	P	P	P	P	P	
Rhossili	P	P	P	P	P	P	P	P	P	P	P	P	P	P	P	P	P	P	P	P	P	P	P	
Pembrey	P	P	P	P	P	P	P	P	P	P	P	P	P	P	P	P	P	P	P	P	P	P	P	
Pendine	P	P	P	P	P	P	P	P	P	P	P	P	P	P	P	P	P	P	P	P	P	P	P	
Amroth Central	P	P	P	P	P	F	P	P	P	P	P	P	P	P	P	F	P	P	P	P	P	P	P	
Wiseman's Bridge																						P	P	P
Coppet Hall									P	P	P	P	P	P	P	P	P	P	P	P	P	P	P	
Saundersfoot	P	P	F	P	P	P	P	P	P	P	P	P	P	P	P	P	P	P	P	P	P	P	P	
Tenby North	P	P	P	P	P	P	P	P	P	P	P	P	P	P	P	P	P	P	P	P	P	P	P	
Castle Beach, Tenby								P	P	P	P	P	P	P	P	P	P	P	P	P	P	P	P	
Tenby South	P	P	P	P	P	P	P	P	P	P	P	P	P	P	P	P	P	P	P	P	P	P	P	
Penally																						P	P	P



Bathing Water	Year																						
	1992	1993	1994	1995	1996	1997	1998	1999	2000	2001	2002	2003	2004	2005	2006	2007	2008	2009	2010	2011	2012	2013	2014
Lydstep						P	P	P	P	P	P	P	P	P	P	P	P	P	P	P	P	P	P
Manorbier						P	P	P	P	P	P	P	P	P	P	P	P	P	P	P	P	P	P
Freshwater East								P	P	P	P	P	P	P	P	P	P	P	P	P	P	P	P
Barafundle									P	P	P	P	P	P	P	P	P	P	P	P	P	P	P
Broad Haven (South)						P	P	P	P	P	P	P	P	P	P	P	P	P	P	P	P	P	P
Freshwater West																					P	P	P
West Angle									P	P	P	P	P	P	P	P	P	P	P	P	P	P	P
Sandy Haven																					P	P	P
Dale									P	P	P	P	P	P	P	P	P	P	P	P	P	P	P
Marloes Sands						P	P	P	P	P	P	P	P	P	P	P	P	P	P	P	P	P	P
Little Haven																					P	P	P
Broad Haven (Central)	P	P	F	P	P	P	P	P	P	P	P	P	P	P	P	P	P	P	P	P	P	P	P
Druidston Haven																					P	P	P
Nolton Haven																					P	P	P
Newgale	P	P	P	P	P	P	P	P	P	P	P	P	P	P	P	P	P	P	P	P	P	P	P
Caerfai						P	P	P	P	P	P	P	P	P	P	P	P	P	P	P	P	P	P
Whitesands	P	P	P	P	P	P	P	P	P	P	P	P	P	P	P	P	P	P	P	P	P	P	P
Abereiddy																					P	P	P
Abermawr																					P	P	P
Newport North	P	F	F	P	P	P	P	P	P	P	P	P	P	P	P	P	P	P	P	P	P	P	P
Poppit West					P	P	F	P	P	P	P	P	P	P	P	P	P	P	P	P	P	P	P
Mwnt																					P	P	P
Aberporth				P	P	P	P	P	P	P	P	P	P	P	P	P	P	P	P	P	P	P	P
Tresaith				P	P	P	P	P	P	P	P	P	P	P	P	P	P	P	P	P	P	P	P
Penbryn																				P	P	P	P
Llangrannog						P	P	P	P	P	P	F	P	P	P	P	P	P	P	P	P	P	P
Cilborth																				P	P	P	P
New Quay North																				P	P	P	P
New Quay Harbour							P	P	P	P	P	P	P	P	P	P	P	P	P	P	P	P	P
Traeth Gwyn New Quay	P	P	F	P	P	P	P	P	P	P	P	P	P	P	P	P	P	P	P	P	P	P	P

Bathing Water	Year																						
	1992	1993	1994	1995	1996	1997	1998	1999	2000	2001	2002	2003	2004	2005	2006	2007	2008	2009	2010	2011	2012	2013	2014
Llanrhystud																				P	P	P	P
Aberystwyth South	F	F	F	P	P	P	P	P	P	P	P	P	P	P	P	P	P	P	P	P	P	P	P
Aberystwyth North	P	P	P	P	P	P	P	P	P	P	P	P	P	P	P	P	P	P	P	P	P	P	P
Clarach South							P	P	P	P	P	P	P	P	P	P	P	P	P	P	P	P	P
Borth *	P	P	P	F	P	P	P	P	P	P	P	P	P	P	P	P	P	P	P	P	P	P	P
Aberdyfi	F	F	P	F	F	P	P	P	P	P	P	P	P	P	P	F	P	P	P	P	P	F	P
Tywyn	P	P	P	P	P	P	P	P	P	F	P	P	P	P	P	P	P	P	#	P	P	P	P
Fairbourne	P	P	P	P	P	P	P	P	P	P	P	P	P	P	P	P	P	P	P	P	P	P	P
Barmouth	P	P	P	P	P	P	P	P	P	P	P	P	P	P	P	P	P	P	P	P	P	P	P
Tal-y-Bont				P	P	P	P	P	P	P	P	P	P	P	P	P	P	P	P	P	P	P	P
Dyffryn (Llanendwyn)				P	P	P	P	P	P	P	P	P	P	P	P	P	P	P	P	P	P	P	P
Llandanwg	P	P	P	P	P	P	P	P	F	P	P	P	P	P	P	P	F	P	P	P	P	P	P
Harlech	P	P	P	F	F	P	P	P	P	P	P	P	P	P	P	P	P	P	P	P	P	P	P
Craig Du Beach Central	F	P	F	P	P	P	P	P	P	P	P	P	P	P	P	P	P	P	P	P	P	P	P
Criccieth	F	P	F	P	P	P	F	P	P	P	P	P	P	P	P	P	P	P	P	P	F	P	P
Pwllheli	P	P	P	P	P	P	P	P	P	P	P	P	P	P	P	P	P	P	P	P	P	P	P
Abersoch	P	P	P	P	P	P	F	P	P	P	P	P	P	P	P	P	P	P	P	P	P	P	P
Porth Neigwl																					P	P	P
Aberdaron																				P	P	P	P
Morfa Nefyn																					P	P	P
Morfa Dinlle	P	P	P	P	P	P	P	P	P	P	P	P	P	P	P	P	P	P	P	P	P	P	P
Llyn Padarn																							P
Llanddwyn						P	P	P	P	P	P	P	P	P	P	P	P	P	P	P	P	P	P
Aberffraw									P	P	P	P	P	P	P	P	P	P	P	P	P	P	P
Rhosneigr	P	P	P	P	P	P	P	P	P	P	P	P	P	P	P	P	P	P	P	P	P	P	P
Silver Bay Rhoscolyn														P	P	P	P	P	P	P	P	P	P
Borth Wen												P	P	P	P	P	P	P	P	P	P	P	P
Trearddur Bay	P	P	P	P	P	P	P	P	P	P	P	P	P	P	P	P	P	P	P	P	P	P	P
Porth Dafarch							P	P	P	P	P	P	P	P	P	P	P	P	P	P	P	P	P
Church Bay												P	P	P	P	P	P	P	P	P	P	P	P

Bathing Water	Year																						
	1992	1993	1994	1995	1996	1997	1998	1999	2000	2001	2002	2003	2004	2005	2006	2007	2008	2009	2010	2011	2012	2013	2014
Cemaes							P	P	P	P	P	P	P	P	P	P	P	P	P	P	P	P	P
Traeth Lligwy												P	P	P	P	P	P	P	P	P	P	P	P
Benllech	P	P	P	P	P	P	P	P	P	P	P	P	P	P	P	P	P	P	P	P	P	P	P
St Davids - Benllech														P	P	P	P	P	P	P	P	P	P
Llanddona						P	P	P	P	P	P	P	P	P	P	P	P	P	P	P	P	P	P
Llanfairfechan																	P	P	P	P	P	P	P
Penmaenmawr				F	P	P	P	F	P	P	P	P	P	P	P	P	P	P	P	P	P	P	P
Llandudno West Shore	F	F	F	P	P	P	P	P	P	F	P	P	P	P	P	P	P	P	P	F	F	P	P
Llandudno North Shore	P	P	P	P	P	P	P	P	P	F	P	P	P	P	P	P	P	P	P	P	P	P	P
Colwyn Bay	P	F	P	P	P	P	P	P	P	P	P	P	P	P	P	P	P	P	P	P	P	P	P
Abergele (Pensarn)																				P	P	P	P
Kinmel Bay (Sandy Cove)	F	P	P	P	P	P	P	P	P	P	P	P	P	P	P	P	P	P	P	P	P	P	P
Marine Lake, Rhyl																					P	P	P
Rhyl	F	F	P	F	P	P	P	P	P	F	P	P	P	P	P	P	P	P	P	P	F	P	P
Rhyl East																							P
Prestatyn	P	P	F	P	P	P	P	P	P	F	P	P	P	P	P	P	P	P	P	P	P	P	P
Total no. designated bathing waters in Wales	50	50	50	55	56	64	68	70	75	75	75	78	78	80	80	80	81	81	80	88	100	100	102
Total no. pass in Wales	39	42	38	49	52	60	64	69	74	70	75	77	78	80	79	78	80	81	80	87	97	99	102
% Imperative pass in Wales	78.0	84.0	76.0	89.1	92.9	93.8	94.1	98.6	98.7	93.3	100.0	98.7	100.0	100.0	98.8	97.5	98.8	100.0	100.0	98.9	97.0	99.0	100.0

# Tywyn bathing water was closed to the public throughout the 2010 season due to flood defence works.

\* Borth was sampled at a temporary sample point in 2011, 2013 and 2014 due to flood defence engineering works.

Chart 1: EC identified bathing waters: overall compliance with the Imperative standard 1992 to 2014.  
 For 1992-2011 the Imperative standard was for faecal and total coliforms; for 2012 onwards, E. coli.

### EC identified bathing waters passing the Imperative standard 1992 to 2014

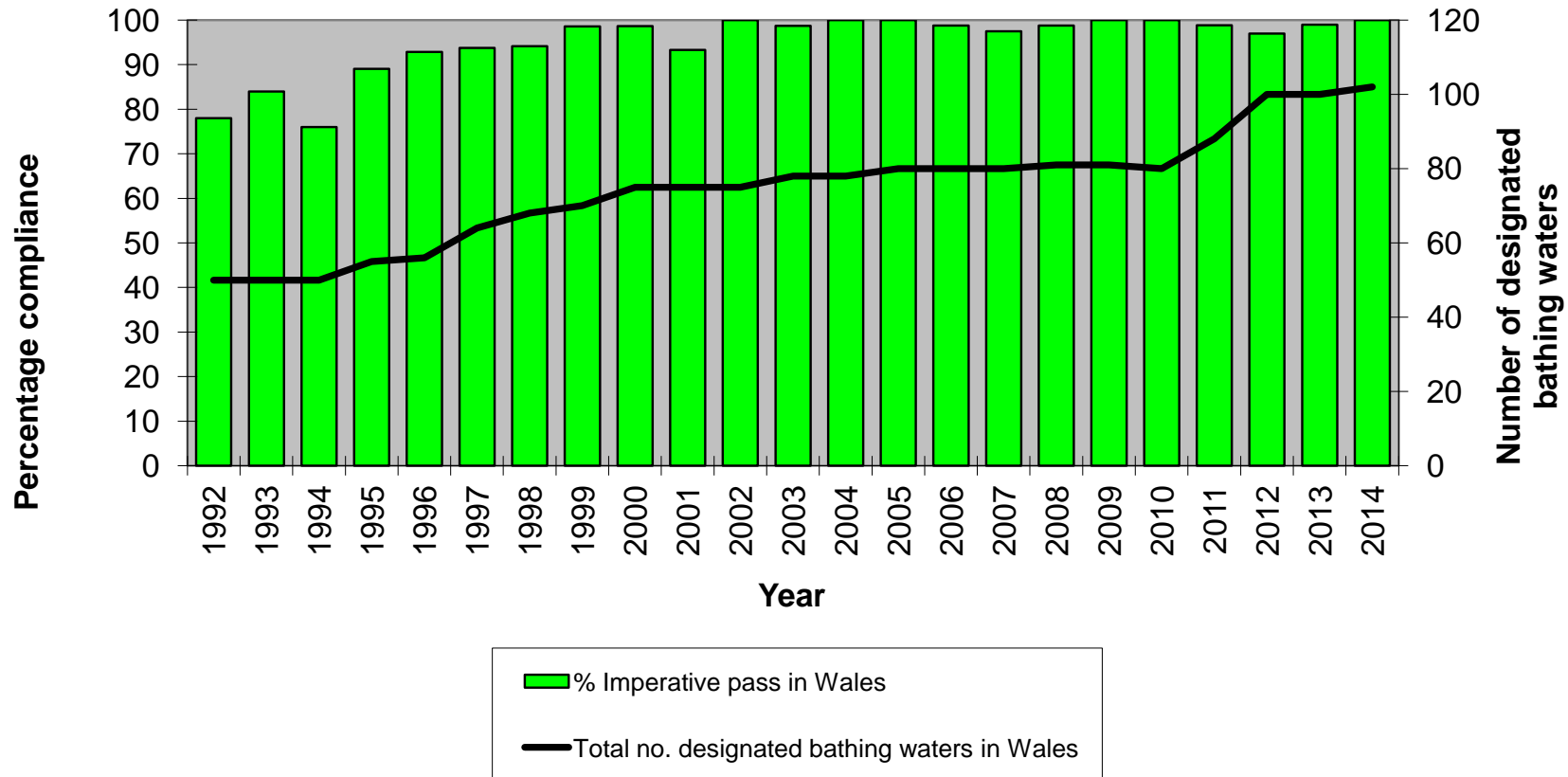


Table 3: EC identified bathing waters: overall compliance with the Guideline standard 1992 to 2014.

For 1992-2011 the Guideline standard was for faecal and total coliforms and faecal streptococci; for 2012 onwards, E. coli and intestinal enterococci. P= Pass F = Fail

Bathing Water	Year																						
	1992	1993	1994	1995	1996	1997	1998	1999	2000	2001	2002	2003	2004	2005	2006	2007	2008	2009	2010	2011	2012	2013	2014
Jackson's Bay Barry Island	F	F	F	F	F	F	F	F	F	F	P	F	P	F	F	F	F	P	F	P	F	P	F
Whitmore Bay Barry Island	F	F	F	F	F	F	F	F	F	F	F	F	F	P	P	P	P	P	P	P	P	P	P
Cold Knap Barry	F	F	F	F	F	F	F	F	F	F	P	P	P	P	P	F	P	P	P	P	P	P	P
Southerndown	F	F	F	F	F	F	F	F	F	F	F	P	P	P	F	P	F	F	P	P	P	P	P
Trecco Bay Porthcawl	F	F	F	P	P	P	F	F	F	F	P	P	P	P	P	P	P	P	P	P	P	P	P
Sandy Bay Porthcawl	F	F	F	P	F	F	F	F	F	F	P	P	P	P	P	P	P	P	P	P	P	P	P
Rest Bay Porthcawl	F	P	F	F	P	P	P	P	P	P	P	P	P	P	P	P	P	P	P	P	P	P	P
Aberafan	F	F	F	F	F	F	F	F	F	F	F	P	P	P	F	P	P	P	P	F	F	F	P
Swansea Bay	F	F	F	F	F	F	F	F	F	F	F	F	F	F	F	P	F	F	F	F	F	P	P
Bracelet Bay	F	F	F	F	F	F	F	P	P	P	P	P	P	P	P	P	P	P	P	P	P	P	P
Limeslade Bay	F	F	F	F	F	F	F	P	F	F	P	P	P	P	P	P	P	F	P	P	P	P	P
Langland Bay	F	F	F	F	F	F	F	P	F	P	P	P	P	P	P	P	P	P	P	P	P	P	P
Caswell Bay	F	F	F	F	F	P	F	P	P	P	P	P	P	P	P	P	P	P	P	P	P	F	P
Oxwich Bay	P	P	P	P	P	P	P	P	P	P	P	P	P	P	P	P	P	P	P	P	P	P	P
Port Eynon Bay	P	P	P	P	P	P	P	P	P	P	P	P	P	P	P	P	P	P	P	P	P	P	P
Rhossili	P	P	P	P	P	P	P	P	P	P	P	P	P	P	P	P	P	P	P	P	P	P	P
Pembrey	P	P	F	P	P	F	F	P	P	P	P	P	P	P	P	P	F	P	P	P	P	P	P
Pendine	F	P	F	F	F	F	P	P	F	P	P	P	P	F	P	P	F	P	P	P	P	P	P
Amroth Central	P	F	F	P	F	F	P	P	F	P	P	P	P	P	P	F	F	P	P	P	P	P	P
Wiseman's Bridge																						F	F
Coppet Hall									F	P	P	P	P	P	P	P	P	P	P	P	P	P	P
Saundersfoot	F	F	F	F	F	F	P	F	F	P	P	P	P	P	P	P	P	P	P	P	P	P	P
Tenby North	P	F	F	P	P	P	P	F	F	P	P	P	P	P	P	P	P	P	P	P	P	P	P
Castle Beach, Tenby								P	P	P	P	P	P	P	P	P	P	P	P	P	P	P	P
Tenby South	F	F	F	F	F	P	P	P	P	P	P	P	P	P	P	P	P	P	P	P	P	P	P

Bathing Water	Year																						
	1992	1993	1994	1995	1996	1997	1998	1999	2000	2001	2002	2003	2004	2005	2006	2007	2008	2009	2010	2011	2012	2013	2014
Penally																					P	P	P
Lydstep						P	P	P	P	P	P	P	P	P	P	P	P	P	P	P	P	P	P
Manorbier						P	P	P	P	P	P	P	P	P	P	P	P	P	P	P	P	P	P
Freshwater East								P	P	P	P	P	P	P	P	P	P	P	P	P	P	P	P
Barafundle									P	P	P	P	P	P	P	P	P	P	P	P	P	P	P
Broad Haven (South)						P	P	P	P	P	P	P	P	P	P	P	P	P	P	P	P	P	P
Freshwater West																					P	P	P
West Angle									P	P	P	F	P	P	P	P	P	P	F	P	F	P	F
Sandy Haven																					P	F	P
Dale									P	P	P	P	P	P	P	P	P	P	P	P	P	P	P
Marloes Sands						P	P	P	P	P	P	P	P	P	P	P	P	P	P	P	P	P	P
Little Haven																					F	P	F
Broad Haven (Central)	P	F	F	P	P	F	F	F	F	P	P	P	P	P	P	F	P	P	P	P	P	P	P
Druidston Haven																					P	P	P
Nolton Haven																					F	P	F
Newgale	P	P	F	P	P	P	P	P	P	P	P	P	P	P	P	P	P	P	P	P	P	P	P
Caerfai						P	P	P	P	P	P	P	P	P	P	P	P	P	P	P	P	P	P
Whitesands	P	P	F	P	P	P	P	P	P	P	P	P	P	P	P	P	P	P	P	P	P	P	P
Abereiddy																					P	P	P
Abermawr																					P	P	P
Newport North	P	F	F	F	F	F	F	P	F	F	P	P	P	P	F	P	F	P	P	F	F	P	P
Poppit West					F	F	F	P	P	P	P	P	P	P	P	P	P	P	P	P	F	P	P
Mwnt																					P	P	P
Aberporth				P	F	F	F	P	P	P	P	P	P	P	P	F	P	P	P	P	P	P	P
Tresaith				F	F	P	F	P	P	P	P	F	P	P	F	P	P	P	P	P	P	P	P
Penbryn																					P	P	P
Llangrannog						F	F	F	F	F	F	F	P	P	P	F	P	P	P	P	P	P	P
Cilborth																					P	P	P
New Quay North																					P	F	F
New Quay Harbour							P	P	P	P	P	P	P	P	P	P	P	P	P	P	P	P	P

Bathing Water	Year																							
	1992	1993	1994	1995	1996	1997	1998	1999	2000	2001	2002	2003	2004	2005	2006	2007	2008	2009	2010	2011	2012	2013	2014	
Traeth Gwyn New Quay	F	F	F	F	P	P	F	F	F	P	P	P	P	P	P	P	P	P	P	P	P	P	F	
Llanrhystud																				P	P	P	P	
Aberystwyth South	F	F	F	F	P	P	F	F	F	F	P	P	F	P	P	P	F	F	P	F	F	F	F	
Aberystwyth North	F	F	F	F	P	F	F	P	F	F	F	P	P	P	P	P	F	F	F	P	F	P	P	
Clarach South							F	P	F	F	P	F	P	P	P	P	F	P	P	F	F	F	P	
Borth *	P	F	P	F	F	F	F	P	F	P	F	P	P	P	P	P	P	P	P	P	P	P	P	
Aberdyfi	F	F	F	F	F	F	F	F	F	F	F	F	F	P	P	F	F	F	F	F	F	F	P	
Tywyn	F	F	F	F	P	F	F	F	F	F	F	P	P	P	P	P	P	P	#	P	F	P	P	
Fairbourne	F	F	P	F	P	P	F	P	F	F	P	P	P	P	P	P	P	P	P	P	P	P	P	
Barmouth	F	F	P	P	P	P	P	P	P	P	P	P	P	P	P	P	F	P	P	P	P	P	P	
Tal-y-Bont				P	P	P	P	F	P	P	P	P	P	P	P	P	P	P	P	P	P	P	P	
Dyffryn (Llanendwyn)				P	P	P	F	P	F	P	P	P	P	P	P	P	P	P	P	P	P	P	P	
Llandanwg	F	F	F	F	F	P	F	F	F	F	P	P	P	P	F	P	F	P	F	P	F	P	P	
Harlech	F	P	F	F	F	P	F	P	F	F	P	P	P	P	P	P	P	P	P	P	P	P	P	
Craig Du Beach Central	F	F	F	F	P	P	F	P	F	F	P	P	P	P	P	P	P	P	P	P	P	P	P	
Criccieth	F	F	F	F	F	F	F	F	F	F	P	P	P	P	P	F	F	P	P	F	F	P	P	
Pwllheli	F	P	P	P	P	P	P	P	F	P	P	P	P	P	P	P	P	P	P	P	P	P	P	
Abersoch																					P	P	P	
Porth Neigwl	F	F	F	P	F	P	F	F	F	P	P	P	P	P	P	P	P	P	P	P	P	P	P	
Aberdaron																					P	P	P	
Morfa Nefyn																					P	P	F	
Morfa Dinlle	P	P	P	P	P	P	P	P	P	P	P	P	P	P	P	P	P	P	P	P	P	P	P	
Llyn Padarn																							P	
Llanddwyn						P	P	P	P	P	P	P	P	P	P	P	P	P	P	P	P	P	P	
Aberffraw									F	P	P	P	P	P	P	P	P	P	P	P	P	P	P	
Rhosneigr	P	P	P	P	P	P	P	P	P	P	P	P	P	P	P	P	P	P	P	P	P	P	P	
Silver Bay Rhoscolyn														P	P	P	P	P	P	P	P	P	P	
Borth Wen												P	P	P	P	P	P	P	P	P	P	P	P	
Trearddur Bay	F	F	P	P	F	F	P	F	F	P	P	F	P	P	P	P	P	P	P	P	P	P	P	
Porth Dafarch							P	F	F	P	P	P	P	P	P	P	P	P	P	P	P	P	P	

Bathing Water	Year																						
	1992	1993	1994	1995	1996	1997	1998	1999	2000	2001	2002	2003	2004	2005	2006	2007	2008	2009	2010	2011	2012	2013	2014
Church Bay												P	P	P	P	P	P	P	P	P	P	P	P
Cemaes							F	F	F	F	F	P	F	F	F	F	F	F	F	P	F	F	F
Traeth Lligwy												P	F	P	P	P	P	P	P	P	F	P	P
Benllech	F	F	F	F	F	F	F	F	F	F	P	P	P	P	P	P	P	P	P	P	P	P	P
St Davids - Benllech														P	P	P	P	P	P	P	P	P	P
Llanddona						P	F	P	P	P	P	P	P	P	P	P	P	P	P	P	P	P	P
Llanfairfechan																P	P	F	P	F	P	P	P
Penmaenmawr				F	F	F	F	F	P	F	F	F	P	P	P	P	P	P	F	P	F	P	P
Llandudno West Shore	F	F	F	F	F	F	F	F	F	F	P	F	F	P	P	P	F	P	F	F	F	P	P
Llandudno North Shore	F	F	F	P	F	F	F	F	F	F	P	F	F	P	P	P	P	P	P	F	P	F	P
Colwyn Bay	F	F	F	F	F	F	F	F	F	F	P	F	P	F	F	P	F	F	F	P	P	P	P
Abergele (Pensarn)																				P	F	P	P
Kinmel Bay (Sandy Cove)	F	F	F	F	P	F	F	F	P	F	P	P	F	P	P	F	P	P	P	P	P	P	P
Marine Lake, Rhyl																					P	P	P
Rhyl	F	F	F	F	F	F	F	F	F	F	F	F	F	F	F	F	F	F	F	F	F	F	F
Rhyl East																							F
Prestatyn	F	F	F	F	F	F	F	F	F	F	F	P	P	F	P	P	P	P	P	P	F	P	P
Total no. designated bathing waters in Wales	50	50	50	55	56	64	68	70	75	75	75	78	78	80	80	80	81	81	80	88	100	100	102
Total no. pass in Wales	13	12	10	21	23	31	25	39	32	45	62	65	67	73	71	69	62	72	68	78	75	89	90
% UK Guideline pass in Wales	26.0	24.0	20.0	38.2	41.1	48.4	36.8	55.7	42.7	60.0	82.7	83.3	85.9	91.3	88.8	86.3	76.5	88.9	85.0	88.6	75.0	89.0	88.2

# Tywyn bathing water was closed to the public throughout the 2010 season due to flood defence works.

\* Borth was sampled at a temporary sample point in 2011, 2013 and 2014 due to flood defence engineering works.



Chart 2: EC identified bathing waters: overall compliance with the Guideline standard 1992 to 2014.

For 1992-2011 the Guideline standard was for faecal and total coliforms and faecal streptococci; for 2012 onwards, E. coli and intestinal enterococci.

### EC identified bathing waters passing the UK Guideline standard 1992 to 2014

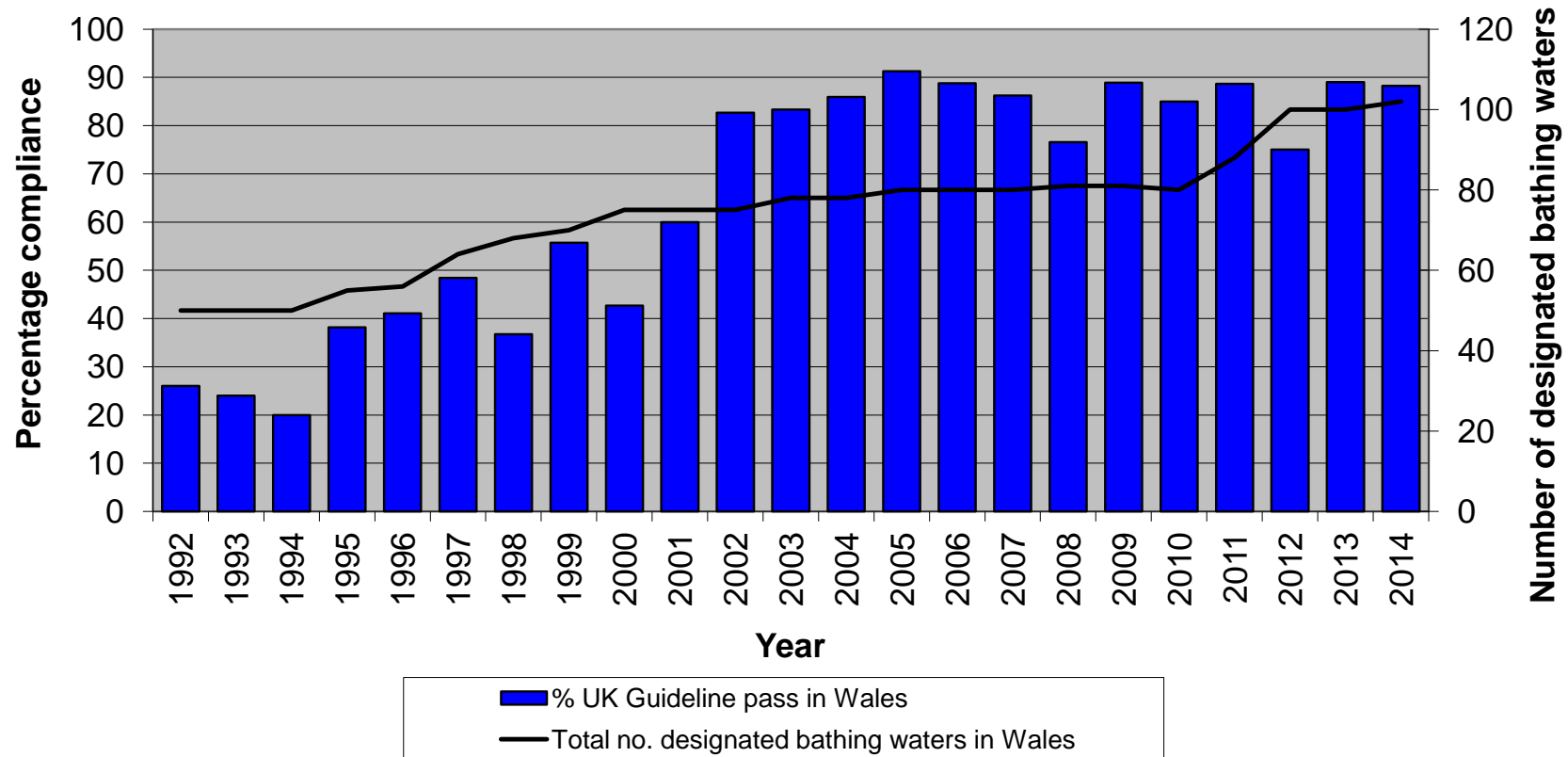


Table 4: Non-EC identified bathing waters: compliance with Imperative and Guideline standards in 2014 for E. coli and intestinal enterococci

Bathing Water	E. coli				Intestinal enterococci			Overall Compliance
	No. Samples	No. Fail "I"	No. fail "G"	Compliance	No. Samples	No. Fail "G"	Compliance	
Rhossili	20	0	4	G	20	0	G	Guideline
Broughton Bay	20	0	5	I	20	0	G	Imperative
Glen Beach	20	0	1	G	20	2	G	Guideline
Monkstone Beach (Nr Tenby)	20	0	1	G	20	0	G	Guideline
Waterwynch Bay	20	0	2	G	20	2	G	Guideline
Priory Bay, Caldy Island	20	0	2	G	20	1	G	Guideline
Swanlake Bay	20	0	0	G	20	0	G	Guideline
Gelliswick, Milford Haven	20	0	2	G	20	2	G	Guideline
Westdale	20	0	0	G	20	0	G	Guideline
Martin's Haven	20	0	1	G	20	0	G	Guideline
St. Brides Haven	20	0	2	G	20	1	G	Guideline
Porthselau	20	0	0	G	20	0	G	Guideline
Goodwick Sands	20	0	1	G	20	0	G	Guideline
Pwllgwaelod	20	1	8	I	20	4	I	Imperative
Cwm yr Eglwys	20	0	3	G	20	0	G	Guideline
Cwmytydu	20	0	3	G	20	5	I	Imperative
Llanina	20	0	2	G	20	3	I	Imperative
Little Quay (Cei Bach)	20	0	2	G	20	2	G	Guideline
Aberaeron South (Northern Groyne)	20	1	3	G	20	2	G	Guideline
Aberarth	20	0	1	G	20	0	G	Guideline
Llanon	20	0	3	G	20	5	I	Imperative
Llansantffraid	20	0	2	G	20	0	G	Guideline
Ynyslas (Northern Groyne - Sea)	20	0	3	G	20	2	G	Guideline
Ynyslas (Twyni Bach - Estuary)	20	0	6	I	20	2	G	Imperative
Criccieth West End	20	0	4	G	20	1	G	Guideline
Abererch	20	1	1	G	20	2	G	Guideline
Porth Trecastell	20	0	6	I	20	2	G	Imperative
Porth Nobla, Llanfaelog	20	0	3	G	20	2	G	Guideline
Porth Tyn Llanfaelog	20	0	0	G	20	0	G	Guideline
Traeth Crigyll	20	0	1	G	20	1	G	Guideline
Porth Tywyn Mawr (Sandy Beach)	20	0	0	G	20	0	G	Guideline
Porth Trwyn	20	0	2	G	20	2	G	Guideline
Cemlyn	20	0	2	G	20	2	G	Guideline
Traeth Bach	20	1	6	I	20	3	I	Imperative
Porth Eilian, Amlwch	20	0	5	I	20	7	I	Imperative
Moelfre	20	0	5	I	20	2	G	Imperative
Red Wharf Bay	20	1	6	I	20	2	G	Imperative
Lleiniog Beach Penmon	20	0	2	G	20	2	G	Guideline

Bathing Water	E. coli				Intestinal enterococci			Overall Compliance
	No. Samples	No. Fail "I"	No. fail "G"	Compliance	No. Samples	No. Fail "G"	Compliance	
Beaumaris	20	0	7	I	20	2	G	Imperative
Old Colwyn	20	0	6	I	20	3	I	Imperative
Splash Point	20	0	7	I	20	4	I	Imperative
Ffrith, Prestatyn	20	0	3	G	20	1	G	Guideline
Barkby Beach	20	0	4	G	20	1	G	Guideline
Gronant Dunes	20	0	8	I	20	2	G	Imperative
Point of Ayr, Talacre	20	0	6	I	20	3	I	Imperative

Total number of bathing waters	45
Number failing I	0
Number passing I	45
Number passing G	29

Table 5: Non-EC identified bathing waters: overall compliance with the Imperative standard 1998 to 2014.

For 1998-2011 the Imperative standard was for faecal and total coliforms; for 2012 onwards, E. coli. P= Pass F = Fail

Local Authority	Bathing Water	1998	1999	2000	2001	2002	2003	2004	2005	2006	2007	2008	2009	2010	2011	2012	2013	2014
Vale of Glamorgan	Penarth Yacht Club	P	F	F	P	P	P	F	P	P	P	F						
Vale of Glamorgan	Watch House Bay, Barry	P	P	F	P	P	P	P	P	P	P	P	P	F	P			
Vale of Glamorgan	Fontygary Bay, Rhoose	P	F	P	P	P	P	P	P	P	P	F	P	P	P	P	P	
Vale of Glamorgan	Limpert Bay, Aberthaw	P	P	P	P	P	P	P	P	P	P	P						
Vale of Glamorgan	Llantwit Major	P	P	P	P	P	P	P	F	P	P	F	P	P	P	P	P	
Vale of Glamorgan	Ogmore Central				P	P	P	P	P	P	P	F	P	P	P	P	P	
Vale of Glamorgan	Ogmore West *												F	F	P	F	P	
Bridgend	Newton Bay, Porthcawl	P	P	P	P	P	P	P	P	P	P	P	F					
Neath Port Talbot	Aberafan East	F	P	P	F	P	P	P	P	P								
Neath Port Talbot	Jersey Marine West	P	F	P	F	P	P	P	P	P	P	F						
Swansea	Swansea Bay - County Hall	F	P	P	P	F	P	F	P	**	**	**	**	**				
Swansea	Swansea Bay - Sketty Lane	F	P	F	P	F	P			**	**	**	**	**				
Swansea	Swansea Bay - Black Pill	F	P	F	P	F	P	P	P	**	**	**	**	**				
Swansea	West Cross		F	F	F	F	P											
Swansea	Norton Road		F	F	P	F	P											
Swansea	Mumbles - Knab Rock	P	P	F	P	P	P	P	P	**	**	**	**	**				
Swansea	Mumbles Head Pier	P	P	F	P	P	P											
Swansea	Pwll Du	P	P	P	P	P	P	P	P	**	**	**	**	**				
Swansea	Three Cliffs Bay	F	P	P	P	P	P											
Swansea	Torbay/Crawley Woods		P	P	P	P	P	P	P	**	**	**	**	**				
Swansea	Mewslade East		P	P	P#	P	P	P	P	**	**	**	**	**				
Swansea	Rhossili		P	P	P	P	P	P	P	**	**	**	**	**	**	P	P	P
Swansea	Broughton Bay	F	P	F	P	P	P	P	F	**	**	**	**	**	**	P	F	P
Carmarthenshire	Llanelli & Loughor Estuary	P	P	P	F	P	P	P	F	F	F	F	F					
Carmarthenshire	Burry Port	P	P	P	P	P	P	P	P	P	P	F	P	P	P	P	P	
Carmarthenshire	St Ishmael	P	P	F	P	F	P	P	P	P								
Carmarthenshire	Gwendraeth Estuary North										P	F	F					

Local Authority	Bathing Water	1998	1999	2000	2001	2002	2003	2004	2005	2006	2007	2008	2009	2010	2011	2012	2013	2014
Carmarthenshire	Llanstephan & Tywi Estuary	F	F	F	F	P	P	P	P	P	F	F	F					
Carmarthenshire	Ferryside Beach	F	P	F	P	F	P	F	F	P	P	F	F					
Carmarthenshire	Morfa Bychan (Pendine)	P	P	F	F	P	P	P	P	P	P	P	P					
Pembrokeshire	Wisemans Bridge [designated 2012]	P	P	F	P	P	P	P	P	P	P	P	P	P	P			
Pembrokeshire	Coppet Hall Beach [designated 2000]	P	P															
Pembrokeshire	Glen Beach			P	P	P	P	P	P	P	P	P	P	P	P	P	P	P
Pembrokeshire	Monkstone Beach (Nr Tenby)	P	P	P	P	P	P	P	P	P	P	P	P	P	P	P	P	P
Pembrokeshire	Tenby South [designated 1999]	P																
Pembrokeshire	Waterwynch Bay		P	P	P	P	P	P	P	P	P	P	P	P	P	P	P	P
Pembrokeshire	Penally [designated 2012]		P	P	P	P	P	P	P	P	P	P	P	P	P			
Pembrokeshire	Priory Bay, Caldy Island	P	P	F	P	P	P	P	P	P	P	P	P	P	P	P	P	P
Pembrokeshire	Swanlake Bay			P	##	P	P	P	P	P	P	P	P	P	P	P	P	P
Pembrokeshire	Freshwater East [designated 1999]	P																
Pembrokeshire	Barafundle [designated 2000]	P	P															
Pembrokeshire	Freshwater West [designated 2012]	P	P	P	P	P	P	P	P	P	P	P	P	P	P			
Pembrokeshire	West Angle [designated 2000]	P	P															
Pembrokeshire	Gelliswick, Milford Haven	P	P	P	F	P	P	P	P	P	P	F	P	P	P	P	P	P
Pembrokeshire	Sandy Haven [designated 2012]	P	P	P	P	P	P	P	P	P	P	P	P	P	P			
Pembrokeshire	Dale [designated 2000]	P	P															
Pembrokeshire	Watwick	P	P	P	P	P	P	P	P	P	P	P						
Pembrokeshire	Westdale	P	P	P	P	P	P	P	P	P	P	P	P	P	P	P	P	P
Pembrokeshire	Martin's Haven	P	P	P	P	P	P	P	P	P	P	P	P	P	P	P	P	P
Pembrokeshire	St. Brides Haven	P	P	P	P	P	P	P	P	P	P	P	P	P	P	P	P	P
Pembrokeshire	Little Haven [designated 2012]	P	P	P	P	P	P	P	P	P	P	P	P	P	P			
Pembrokeshire	Druidston Haven [designated 2012]		P	P	P	P	P	P	P	P	P	P	P	P	P			
Pembrokeshire	Nolton Haven [designated 2012]	P	P	F	P	P	P	P	P	P	P	F	P	P	P			
Pembrokeshire	Porthselau			P	P	P	P	P	P	P	P	P	P	P	P	P	P	P
Pembrokeshire	Abereiddy [designated 2012]	P	P	P	P	P	P	P	P	P	P	P	P	P	P			
Pembrokeshire	Blue Lagoon Abereiddy					P	P	P	P	P	P	P	P	P				

Local Authority	Bathing Water	1998	1999	2000	2001	2002	2003	2004	2005	2006	2007	2008	2009	2010	2011	2012	2013	2014
Pembrokeshire	Abercastle			P	F	F	F	F	P	F	F	P						
Pembrokeshire	Abermawr [designated 2012]		P	P	P	P	P	P	P	P	P	P	P	P	P			
Pembrokeshire	Goodwick Harbour South	P	P	P	P	P	P	P	P	P	P	P						
Pembrokeshire	Goodwick Sands		P	P	P	F	P	P	P	P	P	P	F	P	P	P	P	P
Pembrokeshire	Pwllgwaelod	F	P	F	P	P	P	P	P	F	F	P	P	F	F	F	P	P
Pembrokeshire	Cwm yr Eglwys	P	P	P	P	P	P	P	P	P	P	P	P	P	P	P	P	P
Ceredigion	Patch	F	P	F	F	P	P	F	F									
Ceredigion	Mwnt [designated 2011]	P	P	P	P	P	P	P	P	P	P	P	P	P				
Ceredigion	Penbryn [designated 2011]	P	P		P	P	P	P	P	P	P	P	P	P				
Ceredigion	Cil Borth [designated 2011]	P	P	P	P	P	P	P	P	P	F	P	P	P				
Ceredigion	Cwmtydu	P	P	P	F	P	P	P	P	P	P	F	P	P	P	P	P	P
Ceredigion	New Quay, North Beach [designated 2011]	P	P	P	P	P	P	P	F	P	P	P	P	F				
Ceredigion	Llanina	F	F	P	F	P	F	F	P	P	F	F	P	F	P	P	F	P
Ceredigion	Little Quay (Cei Bach)	P	P	P	F	P	P	P	P	P	F	P	P	P	P	P	P	P
Ceredigion	Gilfach yr Halen	P	F	P	F	P	P	P	P	P	P	F						
Ceredigion	Aberaeron South (Northern Groyne)	P	P	P	P	F	P	P	P	P	P	P	P	P	P	P	F	P
Ceredigion	Aberaeron Harbour (Fourth Groyne North)	P	P	P	P	F	P	P	P	P	P	P	P	P				
Ceredigion	Aberaeron North (North of Groynes)	P	F	P	P	P	P	P	P									
Ceredigion	Aberarth	P	P	P	P	P	P	P	P	P	P	P	P	P	P	P	P	P
Ceredigion	Llanon	P	P	P	P	P	P	P	P	P	P	P	P	F	P	P	P	P
Ceredigion	Llansantffraid	P	P	P	P	P	P	P	P	P	P	P	P	P	P	P	P	P
Ceredigion	Llanrhystyd [designated 2011]	P	P	P	P	P	P	P	P	P	P	P	P	P				
Ceredigion	Ynyslas (Northern Groyne - Sea)	P	P	P	P	P	P	F	P	P	P	P	P	F	P	P	P	P
Ceredigion	Ynyslas (Twyni Bach - Estuary)	F	P	F	F	P	P	P	P	P	P	F	P	F	P	P	P	P
Gwynedd	Carreg Wen	F	F	F	F	P	F	F	F	P	P	P						
Gwynedd	Criccieth West End	F	P	F	P	P	P	F	P	P	P	P	P	P	P	P	P	P
Gwynedd	Abererch	P	P	P	P	P	P	F	P	P	P	P	P	P	P	P	P	P

Local Authority	Bathing Water	1998	1999	2000	2001	2002	2003	2004	2005	2006	2007	2008	2009	2010	2011	2012	2013	2014
Gwynedd	Llanbedrog	P	P	F	P	F	P	P	P	F	P	F	F	F		P		
Gwynedd	Llanbedrog Beach North							P	P	F	P							
Gwynedd	Porth Neigwl	P	P	P	P	P	P	P	P	P	P	P	P	P	P			
Gwynedd	Aberdaron [designated 2011]	P	P	P	P	P	P	P	P	P	P	F	P	F				
Gwynedd	Porth Oer											F						
Gwynedd	Porth Nefyn	P	P	P	P	P	F	P	P	F	P	P	P	P				
Gwynedd	Port Dinorwic (Felinheli)	P	P	P	P	P	P	F	P	P	P	F						
Gwynedd	Plas Menai	F	P	P	F	P	P	P	P	F	P	P	P	P				
Anglesey	Aberffraw [designated 2000]	P	P															
Anglesey	Porth Trecastell	P	P	P	P	P	P	P	P	P	P	P	P	P	P	P	P	P
Anglesey	Porth Nobla, Llanfaelog	P	P	P	P	P	P	P	P	P	P	P	P	P	P	P	P	P
Anglesey	Porth Tyn Llanfaelog	P	P	P	P	P	P	P	P	P	P	P	P	P	P	P	P	P
Anglesey	Traeth Crigyll	P	P	P	P	P	P	P	P	P	P	P	P	P	P	P	P	P
Anglesey	Silver Bay, Rhoscolyn [designated 2005]	P	P	P	P	P	P	P										
Anglesey	Borth Wen [designated 2003]	P	P	P	P	P												
Anglesey	Porth Tywyn Mawr (Sandy Beach)	P	P	P	P	P	P	P	P	P	P	P	P	P	P	P	P	P
Anglesey	Porth Trwyn	P	P	P	P	P	P	P	P	P	P	P	P	P	P	P	P	P
Anglesey	Church Bay [designated 2003]	P	P	P	P	P												
Anglesey	Cemlyn	P	P	P	P	P	P	P	P	P	P	P	P	P	P	P	P	P
Anglesey	Traeth Bach	P	P	P	P	P	P	F	P	P	P	P	P	P	P	P	P	P
Anglesey	Porth Eilian, Amlwch	F	F	P	P	P	P	P	P	P	P	P	P	P	P	P	P	P
Anglesey	Traeth Lligwy [designated 2003]	F	P	P	P	P												
Anglesey	Moelfre	F	P	P	P	P	P	P	P	P	P	P	P	P	P	P	P	P
Anglesey	St. David's, Benllech [designated 2005]	P	P	P	P	P	P	P										
Anglesey	Red Wharf Bay			P	P	P	P	P	P	P	P	P	P	P	P	P	P	P
Anglesey	Lleiniog Beach Penmon	P	P	P	P	P	P	P	P	P	P	P	P	P	P	P	P	P
Anglesey	Beaumaris	P	P	P	P	P	P	P	P	P	P	P	P	P	P	P	P	P
Conwy	Llanfairfechan [designated 2008]	F	P	P	P	P	P	P	P	P	P							
Conwy	Conwy Morfa	P	P	P	P	P	P	P	P	P	F	P	P	P	P	P	P	

Local Authority	Bathing Water	1998	1999	2000	2001	2002	2003	2004	2005	2006	2007	2008	2009	2010	2011	2012	2013	2014
Conwy	Deganwy	P	P	F	P	P	P	P	P	P	F	P						
Conwy	Penrhyn Bay	F	P	F	P	P	P	P	P	P	P	P	P	P	P	P	P	
Conwy	Colwyn Bay Cayley Promenade	P	P	P	P	P	P	P	P	P	P	P						
Conwy	Colwyn Bay Marine Road	P	P	P	P	P	P	P	P	P	P	P						
Conwy	Old Colwyn	P	P	P	P	P	P	P	P	P	P	P	P	P	P	P	P	P
Conwy	Llanddulas	F	P	P	P	P	P	P	P				P	P	P	P	P	
Conwy	Abergele (Pensarn) [designated 2011]	P	P	P	P	P	P	P	P	P	P	P	P	P				
Conwy	Towyn	P	P	F	P	P	P	F	P	P	P	P						
Denbighshire	Marine Lake, Rhyl [designated 2012]								P	P	P	P	P	P	P			
Denbighshire	Splash Point	P	P	F	P	P	P	P	P	P	F	P	P	P	P	P	P	P
Denbighshire	Ffrith, Prestatyn	P	P	P	P	P	P	P	P	P	P	P	P	P	P	P	P	P
Denbighshire	Barkby Beach	P	P	P	P	P	P	P	P	P	P	P	P	P	P	P	P	P
Denbighshire	Gronant Dunes							P	P	P	P	P	P	P	P	P	P	P
Denbighshire	Gronant						P											
Flintshire	Point of Ayr, Talacre	P	P	P	P	F	P	P	P	P	P	P	P	P	P	P	P	P

Total Number of Bathing Waters Sampled	116	116	114	111	113	111	107	106	95	94	93	81	75	63	54	53	45
Number meeting I standards	92	100	89	95	100	107	94	99	88	84	73	73	65	62	52	50	45
% Meeting I standards	79.3	86.2	78.1	85.6	88.5	96.4	87.9	93.4	92.6	89.4	78.5	90.1	86.7	98.4	96.3	94.3	100.0

# compliance calculated using a reduced number of samples as a consequence of restricted access due to Foot and Mouth disease

## no samples taken in 2001 season due to Foot and Mouth restrictions

\* Ogmores West moved from sample point 19108 in 2010 to sample point 19044 in 2011

\*\* Swansea's non-EC bathing waters have been sampled for the determinands for the revised Bathing Water Directive 2006; they could not be classified against the current Bathing Water Directive from 2006 to 2011 as they do not have any results for total coliforms. The cBWD transitional standards without total coliforms did not exist until 2012.

Note: Only beaches that were monitored in 2003 onwards are shown, along with those designated after 1990. The totals for each year include all beaches monitored in that year.



Chart 3: Non-EC identified bathing waters: overall compliance with the Imperative standard 1998 to 2014.  
 For 1998-2011 the Imperative standard was for faecal and total coliforms; for 2012 onwards, E. coli.

### Non-EC identified bathing waters passing the Imperative standard 1998 to 2014

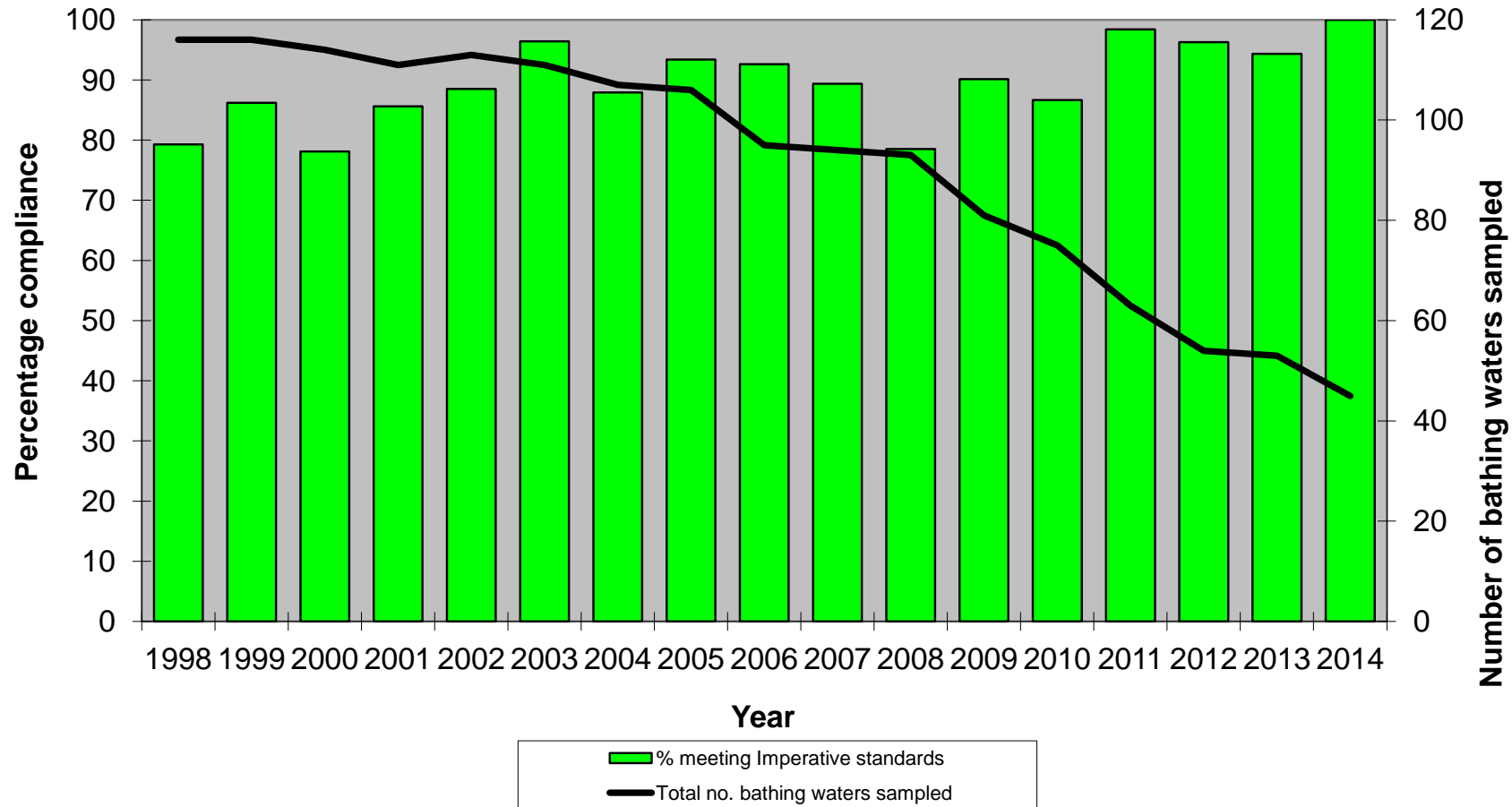


Table 6: Non-EC identified bathing waters: overall compliance with the Guideline standard 1998 to 2014.

For 1998-2011 the Guideline standard was for faecal and total coliforms and faecal streptococci; for 2012 onwards, E. coli and intestinal enterococci. P= Pass F = Fail

Local Authority	Bathing Water	1998	1999	2000	2001	2002	2003	2004	2005	2006	2007	2008	2009	2010	2011	2012	2013	2014
Vale of Glamorgan	Penarth Yacht Club	F	F	F	F	F	F	F	F	F	F	F						
Vale of Glamorgan	Watch House Bay, Barry	F	F	F	F	F	F	F	F	F	F	F	F	F	P			
Vale of Glamorgan	Fontygary Bay, Rhoose	F	F	F	P	P	P	P	F	P	P	F	P	P	P	P	P	
Vale of Glamorgan	Limpert Bay, Aberthaw	P	F	F	F	P	P	F	F	F	P	F						
Vale of Glamorgan	Llantwit Major	F	P	F	F	P	P	F	F	F	P	F	F	F	P	F	P	
Vale of Glamorgan	Ogmore Central				F	F	F	F	F	F	F	F	F	F	P	F	F	
Vale of Glamorgan	Ogmore West *												F	F	F	F	F	
Bridgend	Newton Bay, Porthcawl	F	F	F	F	F	F	F	F	F	F	F	F					
Neath Port Talbot	Aberafan East	F	F	F	F	F	F	F	P	F								
Neath Port Talbot	Jersey Marine West	F	F	F	F	F	F	F	P	F	F	F						
Swansea	Swansea Bay - County Hall	F	F	F	F	F	F	F	F	**	**	**	**	**				
Swansea	Swansea Bay - Sketty Lane	F	F	F	F	F	F			**	**	**	**	**				
Swansea	Swansea Bay - Black Pill	F	F	F	F	F	F	F	F	**	**	**	**	**				
Swansea	West Cross		F	F	F	F	P											
Swansea	Norton Road		F	F	F	F	F											
Swansea	Mumbles - Knab Rock	F	P	F	P	F	P	P	P	**	**	**	**	**				
Swansea	Mumbles Head Pier	F	F	F	F	P	F											
Swansea	Pwll Du	F	P	P	P	P	P	P	P	**	**	**	**	**				
Swansea	Three Cliffs Bay	F	P	P	P	P	P											
Swansea	Torbay/Crawley Woods		P	P	P	P	P	P	P	**	**	**	**	**				
Swansea	Mewslade East		P	P	P#	P	P	P	F	**	**	**	**	**				
Swansea	Rhossili		P	P	P	P	P	P	P	**	**	**	**	**	**	P	P	P
Swansea	Broughton Bay	F	F	F	F	F	F	P	F	**	**	**	**	**	**	P	F	F
Carmarthenshire	Llanelli & Loughor Estuary	P	P	P	F	P	P	P	F	F	F	F	F					
Carmarthenshire	Burry Port	F	P	P	F	F	P	F	F	P	F	F	F	P	F	F	F	
Carmarthenshire	St Ishmael	F	F	F	F	F	F	F	F	F								
Carmarthenshire	Gwendraeth Estuary North										F	F	F					
Carmarthenshire	Llanstephan & Tywi Estuary	F	F	F	F	F	F	F	F	F	F	F	F					

Local Authority	Bathing Water	1998	1999	2000	2001	2002	2003	2004	2005	2006	2007	2008	2009	2010	2011	2012	2013	2014
Carmarthenshire	Ferryside Beach	F	F	F	F	F	F	F	F	F	F	F	F					
Carmarthenshire	Morfa Bychan (Pendine)	F	F	F	F	F	F	F	P	P	P	F	P					
Pembrokeshire	Wisemans Bridge [designated 2012]	F	F	F	F	P	F	F	P	F	F	F	F	F	F			
Pembrokeshire	Coppett Hall Beach [designated 2000]	F	F															
Pembrokeshire	Glen Beach			F	P	P	P	F	P	P	F	P	P	F	F	P	F	P
Pembrokeshire	Monkstone Beach (Nr Tenby)	P	F	P	P	P	P	P	P	P	P	P	P	P	P	P	P	P
Pembrokeshire	Tenby South [designated 1999]	F																
Pembrokeshire	Waterwynch Bay		F	P	P	P	P	P	P	P	P	P	F	F	P	P	P	P
Pembrokeshire	Penally [designated 2012]		F	P	P	P	P	F	P	P	P	P	P	P	P			
Pembrokeshire	Priory Bay, Caldy Island	P	F	F	F	P	P	F	P	P	P	P	P	P	P	P	P	P
Pembrokeshire	Swanlake Bay			P	##	P	P	P	P	P	P	P	P	P	P	P	P	P
Pembrokeshire	Freshwater East [designated 1999]	F																
Pembrokeshire	Barafundle [designated 2000]	P	P															
Pembrokeshire	Freshwater West [designated 2012]	P	P	P	P	P	F	P	P	P	P	P	P	P	P			
Pembrokeshire	West Angle [designated 2000]	F	F															
Pembrokeshire	Gelliswick, Milford Haven	F	F	F	F	F	F	F	F	F	F	F	F	F	F	F	F	P
Pembrokeshire	Sandy Haven [designated 2012]	F	F	F	P	P	F	F	F	F	F	F	F	F	P			
Pembrokeshire	Dale [designated 2000]	F	F															
Pembrokeshire	Watwick	P	P	P	P	P	P	P	P	P	P	P						
Pembrokeshire	Westdale	P	P	P	P	P	P	P	P	P	P	P	P	P	P	P	P	P
Pembrokeshire	Martin's Haven	P	P	P	P	P	P	P	P	P	P	P	P	P	P	P	P	P
Pembrokeshire	St. Brides Haven	F	P	P	F	P	P	P	P	F	P	P	F	F	F	F	F	P
Pembrokeshire	Little Haven [designated 2012]	F	F	F	F	F	F	P	F	F	F	F	P	F	P			
Pembrokeshire	Druidston Haven [designated 2012]		F	P	F	P	P	P	P	P	P	P	P	P	P			
Pembrokeshire	Nolton Haven [designated 2012]	F	F	F	F	F	P	P	P	F	F	F	F	F	F			
Pembrokeshire	Porthselau			P	P	P	P	F	P	P	P	P	P	P	P	P	P	P
Pembrokeshire	Abereiddy [designated 2012]	P	P	P	P	P	P	F	P	P	P	P	P	P	P			
Pembrokeshire	Blue Lagoon Abereiddy					P	P	P	P	P	P	P	P	P				

Local Authority	Bathing Water	1998	1999	2000	2001	2002	2003	2004	2005	2006	2007	2008	2009	2010	2011	2012	2013	2014
Pembrokeshire	Abercastle			F	F	F	F	F	F	F	F	F						
Pembrokeshire	Abermawr [designated 2012]	F	P	F	P	P	P	P	P	P	P	P	F	P	P			
Pembrokeshire	Goodwick Harbour South	P	P	F	P	P	P	P	P	P	F	P						
Pembrokeshire	Goodwick Sands		F	F	F	F	F	P	F	F	F	F	F	P	P	P	P	P
Pembrokeshire	Pwllgwaelod	F	F	F	F	F	F	F	F	F	F	F	F	F	F	F	F	F
Pembrokeshire	Cwm yr Eglwys	F	F	F	F	F	P	P	F	P	P	P	P	P	P	P	F	P
Ceredigion	Patch	F	F	F	F	F	F	F	F									
Ceredigion	Mwnt [designated 2011]	F	F	P	F	P	P	F	P	P	P	P	P	P				
Ceredigion	Penbryn [designated 2011]	F	F	F	F	P	F	F	P	P	P	F	P	F				
Ceredigion	Cil Borth [designated 2011]	F	P	F	F	P	F	F	P	F	F	P	F	P				
Ceredigion	Cwmytydu	F	F	F	F	F	F	P	P	F	P	F	F	F	P	F	F	F
Ceredigion	New Quay, North Beach [designated 2011]	F	F	F	F	F	F	F	F	F	F	F	F	F				
Ceredigion	Llanina	F	F	F	F	F	F	F	F	F	F	F	F	F	F	F	F	F
Ceredigion	Little Quay (Cei Bach)	F	F	F	F	F	F	F	P	F	F	F	F	F	P	P	F	P
Ceredigion	Gilfach yr Halen	F	F	F	F	F	F	F	F	F	F	F						
Ceredigion	Aberaeron South (Northern Groyne)	F	F	F	P	F	P	P	P	P	F	P	P	F	P	F	F	P
Ceredigion	Aberaeron Harbour (Fourth Groyne North)	F	F	F	F	F	P	F	P	F	F	F	F	F				
Ceredigion	Aberaeron North (North of groynes)	F	F	F	F	F	P	F	P									
Ceredigion	Aberarth	F	F	F	F	F	F	F	F	F	F	F	F	F	F	P	F	P
Ceredigion	Llanon	F	F	F	F	F	F	F	F	F	F	F	F	F	P	F	F	F
Ceredigion	Llansantffraid	P	P	F	F	P	P	F	P	P	P	F	F	P	P	P	F	P
Ceredigion	Llanrhystyd [designated 2011]	F	P	P	P	P	P	P	P	P	F	P	P	P				
Ceredigion	Ynyslas (Northern Groyne - Sea)	F	F	F	F	F	F	F	P	P	P	P	P	F	P	P	P	P
Ceredigion	Ynyslas (Twyni Bach - Estuary)	F	F	F	F	F	F	F	F	F	F	F	F	F	F	F	F	F
Gwynedd	Carreg Wen	F	F	F	F	F	F	F	F	F	F	F						
Gwynedd	Criccieth West End	F	F	F	F	P	F	F	F	P	F	F	P	F	F	F	P	P
Gwynedd	Abererch	F	P	P	P	P	F	F	P	P	P	P	P	P	F	P	P	P
Gwynedd	Llanbedrog	F	F	F	F	F	F	F	F	F	F	F	F	F		F		

Local Authority	Bathing Water	1998	1999	2000	2001	2002	2003	2004	2005	2006	2007	2008	2009	2010	2011	2012	2013	2014
Gwynedd	Llanbedrog Beach North							P	P	F	F							
Gwynedd	Porth Neigwl [designated 2012]	P	P	P	P	P	P	P	P	P	P	P	P	P	P			
Gwynedd	Aberdaron [designated 2011]	P	P	F	F	P	F	F	P	P	F	F	F	F				
Gwynedd	Porth Oer											F						
Gwynedd	Porth Nefyn	F	F	F	F	F	F	F	F	F	F	P	F	F				
Gwynedd	Port Dinorwic (Felinheli)	F	F	F	F	F	F	F	F	F	F	F						
Gwynedd	Plas Menai	F	F	F	F	F	F	F	F	F	F	F	F	F				
Anglesey	Aberffraw [designated 2000]	F	F															
Anglesey	Porth Tre Castell	F	P	F	P	P	P	P	P	P	P	F	P	P	P	P	P	F
Anglesey	Porth Nobla, Llanfaelog	P	P	P	P	P	P	P	P	P	P	P	P	P	P	P	P	P
Anglesey	Porth Tyn Llanfaelog	P	P	P	P	P	P	P	P	P	P	P	P	P	P	P	P	P
Anglesey	Traeth Crigyll	F	F	F	F	P	F	P	F	F	P	P	P	P	P	P	P	P
Anglesey	Silver Bay, Rhoscolyn [designated 2005]	P	P	P	P	P	P	P										
Anglesey	Borth Wen [designated 2003]	F	P	F	P	P												
Anglesey	Porth Tywyn Mawr (Sandy Beach)	P	P	F	P	P	P	P	P	P	P	P	P	P	P	P	P	P
Anglesey	Porth Trwyn	P	P	P	F	F	P	F	P	F	P	P	P	P	P	F	P	P
Anglesey	Church Bay [designated 2003]	P	P	P	P	P												
Anglesey	Cemlyn	P	P	P	P	P	P	P	P	P	P	P	P	P	P	P	P	P
Anglesey	Traeth Bach	F	F	F	F	F	F	F	F	F	F	F	F	F	P	F	P	F
Anglesey	Porth Eilian, Amlwch	F	F	F	F	P	P	F	F	F	F	F	F	F	P	F	P	F
Anglesey	Traeth Lligwy [designated 2003]	F	F	F	P	P												
Anglesey	Moelfre	F	F	F	F	P	F	P	P	P	F	F	F	P	P	F	F	F
Anglesey	St. David's, Benllech [designated 2005]	F	P	P	F	P	F	P										
Anglesey	Red Wharf Bay			F	F	F	F	F	P	F	P	P	P	F	P	F	F	F
Anglesey	Lleiniog Beach Penmon	P	F	P	F	P	F	F	F	P	P	F	F	P	F	P	P	P
Anglesey	Beaumaris	F	F	F	F	P	F	F	F	P	P	F	F	P	P	P	F	F
Conwy	Llanfairfechan [designated 2008]	F	F	F	F	P	P	F	F	F	F							
Conwy	Conwy Morfa	F	F	F	F	F	F	F	P	F	F	F	F	P	P	F	F	
Conwy	Deganwy	F	F	F	F	F	P	F	F	F	F	F						

Local Authority	Bathing Water	1998	1999	2000	2001	2002	2003	2004	2005	2006	2007	2008	2009	2010	2011	2012	2013	2014
Conwy	Penrhyn Bay	F	F	F	F	F	F	P	F	P	F	F	F	F	P	F	F	
Conwy	Colwyn Bay Cayley Promenade	F	F	F	F	F	F	F	F	F	F	F						
Conwy	Colwyn Bay Marine Road	F	F	F	F	P	P	F	P	F	P	F						
Conwy	Old Colwyn	F	F	F	F	P	F	F	F	F	P	F	P	P	P	F	P	F
Conwy	Llanddulas	F	F	F	F	P	F	F	F				F	P	P	F	F	
Conwy	Abergele (Pensarn) [designated 2011]	F	F	F	F	P	F	F	P	F	F	P	P	F				
Conwy	Towyn	F	F	F	F	P	F	F	P	P	P	P						
Denbighshire	Marine Lake, Rhyl [designated 2012]								P	P	P	P	P	P	P			
Denbighshire	Splash Point	F	F	F	F	F	F	F	F	F	F	P	P	F	F	F	F	F
Denbighshire	Ffrith, Prestatyn	F	F	F	F	F	F	F	P	P	F	P	F	P	P	F	F	P
Denbighshire	Barkby Beach	F	F	F	F	P	F	P	P	P	F	P	F	P	P	P	P	P
Denbighshire	Gronant Dunes							P	P	F	F	P	P	P	P	P	F	F
Denbighshire	Gronant						F											
Flintshire	Point of Ayr, Talacre	F	F	F	F	F	F	F	P	F	F	F	P	F	P	F	F	F

Total no. bathing waters sampled	116	116	114	111	113	111	107	106	95	94	93	81	75	63	54	53	45
Number meeting G standards	22	36	32	33	59	46	39	57	43	41	40	38	39	48	28	26	29
% meeting UK Guideline standards	19.0	31.0	28.1	29.7	52.2	41.4	36.4	53.8	45.3	43.6	43.0	46.9	52.0	76.2	51.9	49.1	64.4

# compliance calculated using a reduced number of samples as a consequence of restricted access due to Foot and Mouth disease

## no samples taken in 2001 season due to Foot and Mouth restrictions

\* Ogmere West moved from sample point 19108 in 2010 to nearby sample point 19044 in 2011

\*\* Swansea's non-EC bathing waters have been sampled for the determinands for the revised Bathing Water Directive 2006; they could not be classified against the current Bathing Water Directive from 2006 to 2011 as they do not have any results for total coliforms. The cBWD transitional standards without total coliforms did not exist until 2012.

Note: Only beaches that were monitored in 2003 onwards are shown, along with those designated after 1990. The totals for each year include all beaches monitored in that year.

Chart 4: Non-EC identified bathing waters: overall compliance with the Guideline standard 1998 to 2014.

For 1998-2011 the Guideline standard was for faecal and total coliforms and faecal streptococci; for 2012 onwards, E. coli and intestinal enterococci

### Non-EC identified bathing waters passing the Guideline standard 1998 to 2014

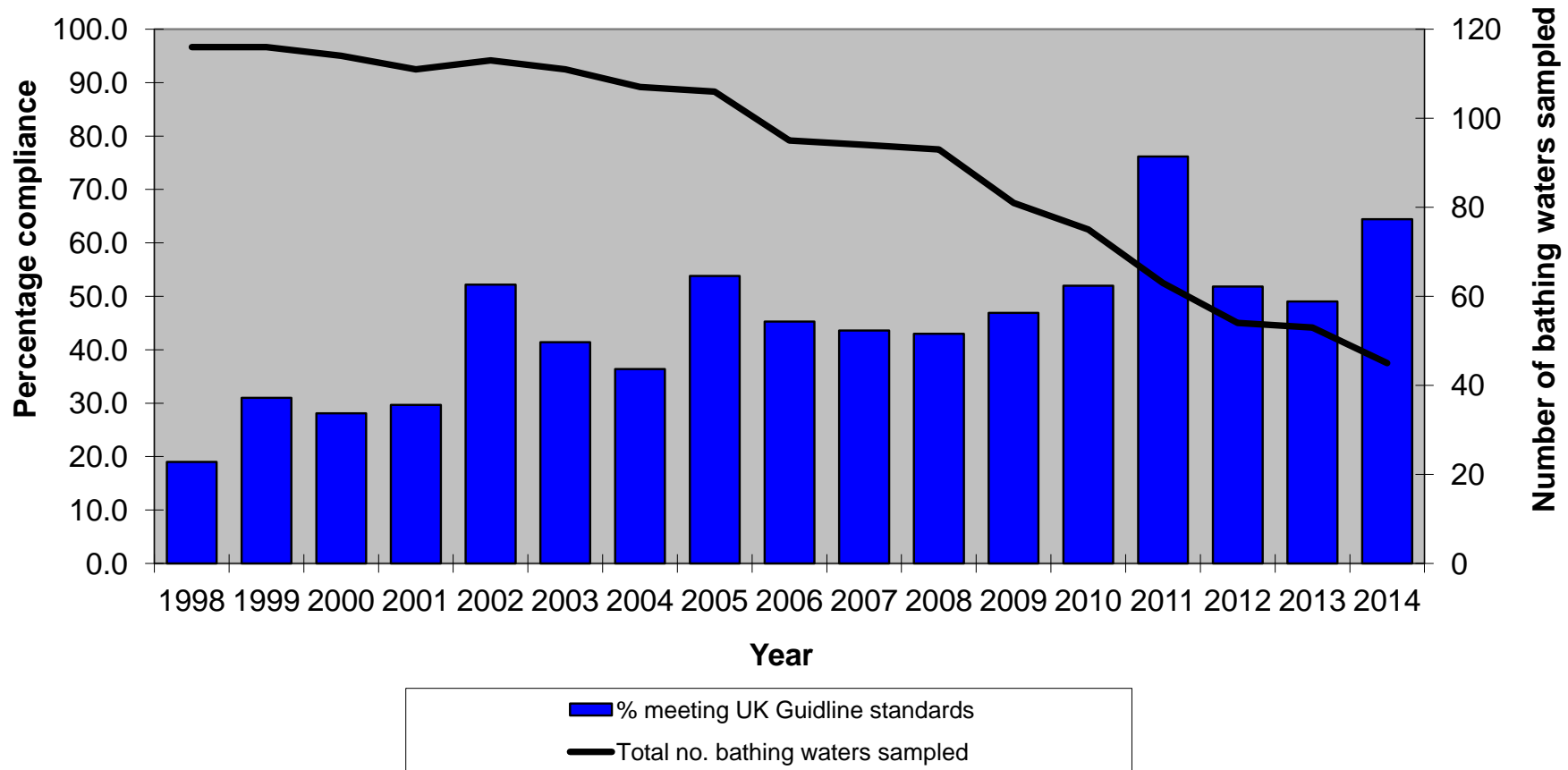


Table 7: EC identified bathing waters: Reasons for failure and improvement actions for bathing waters at >0% risk of future non-compliance with the Sufficient standard of the rBWD at the end of the 2014 bathing season, based on historical sampling data.

EC Bathing Water	Percentage Risk of Non-Compliance with rBWD Sufficient standard	Parameter most at risk	Data period	Likely Source of Microbial Contamination and NRW Actions
Aberdyfi	27.1%	E. Coli	2011-2014	<p><b>Sources:</b> The Afon Dyfi flows past the bathing water sampling point and statistical analysis has shown that bacteria levels are highest when the tide is out. In 2014 Gwynedd Council put up warning signs warning of poorer water quality either side of low water and as bathing was discouraged around this time no compliance samples were taken during this period. This has led to an improvement in the results over the season. In addition, Gwynedd Council have signed up to the Environment Agency's Prediction and Discounting tool. This tool was not very successful at predicting poor quality. The accuracy needs to be improved significantly in order to protect the public who chose to bathe at low water and to enable us to discount the samples taken outside of the low water period in wet weather.</p> <p><b>Actions:</b> NRW staff have carried out a bacterial monitoring programme on all the major tributaries of the Afon Dyfi in an effort to identify those tributaries and sub-catchments where bacterial concentrations were high. Following on from this, farm visits were carried out in the lower Dyfi catchment in an effort to identify poor structures (i.e. slurry stores) and poor practices e.g. cattle crossing streams etc that could give rise to elevated bacterial results. Around 50 farms were visited but nothing of note was found. Checks were also done on a number of private sewage treatment works in the area especially caravan sites. A check was also done to see if there were any areas that were unsewered and where there were likely to be numerous septic tanks that hadn't been registered. A mailshot was done to about 150 properties in the lower Dyfi to ask them to register their septic tanks and a caravan site in Dolybont applied for a permit. An investigation into elevated bacterial results in Tre'r Ddol found an issue with a septic tank overflow from a few houses. This was sorted out and results returned to normal. There are 4 more caravan sites and 4 more farms in the lower Dyfi to visit as well as a pheasant shoot and a problem septic tank near Borth. One caravan site was prosecuted during the season for having poor quality effluent over a period of time. This needs to be followed up in 2015.</p>



EC Bathing Water	Percentage Risk of Non-Compliance with rBWD Sufficient standard	Parameter most at risk	Data period	Likely Source of Microbial Contamination and NRW Actions
Cemaes	21.8%	Intestinal Enterococci	2011-2014	<p><b>Sources:</b> The Afon Wygyr flows onto the EC bathing beach. The catchment is agricultural, but Dŵr Cymru do have a sewage works upstream at Llanfechell which has been the subject of a trial into Elimbach disinfection to kill bacteria.</p> <p><b>Actions:</b> Bacterial monitoring of the catchment during 2014 showed a marked increase in bacterial loading downstream of Llanfechell Sewage Treatment Works (STW) and downstream of where cattle crossed the river. The pollution prevention work done on the farms historically was reviewed and the farms re-visited with particular emphasis on livestock access to the river. A number of farmers have agreed to having the Afon Wygyr on their land fenced off to prevent livestock access and to reduce bacterial loading. The work to fence the river has been priced up and money is being sought to do the work during 2015. Dŵr Cymru's Elimbach trial at Llanfechell STW had to be bought to an end during the summer of 2014 so there was no disinfection on their effluent. As this trial wasn't a success Dŵr Cymru have had no choice but to install ultra violet (UV) disinfection on the final effluent from the works. This is currently being installed and will be operational before the start of the 2015 bathing water season. Between the fencing work on the river and the UV on the effluent the bacterial load carried by the river should decrease markedly from 2015 onwards - if both projects are delivered. No pattern with failures, weather and tidal state has been established but a prediction model for this beach could be the key to making a significant difference.</p>

EC Bathing Water	Percentage Risk of Non-Compliance with rBWD Sufficient standard	Parameter most at risk	Data period	Likely Source of Microbial Contamination and NRW Actions
New Quay North	12.3%	Intestinal Enterococci	2011-2014	<p><b>Sources:</b> Previously numerous misconnections and no connections were identified and repaired in the culvert that outflows onto the beach. We believe further misconnections are yet to be identified. NRW are working with Ceredigion CC in identifying areas north of the Culvert in New Quay which have not been looked at previously. Other potential sources include agricultural and local industry/business inputs.</p> <p><b>Actions:</b> Significant multi-agency effort has been employed to identify misconnections in the culvert, including dye tracing, camera surveys and sonde deployment. Numerous misconnections and no connections were identified over the past three years, all of which have now been reconnected. Further investigations are required to identify further sources of bacteria in the culvert, due to results remaining high. A boat survey was undertaken in 2013 to help to determine effects from local industries on water quality in the bay. We are currently working closely with local businesses and industries in New Quay to reduce bacteria levels in the bay and this work will continue into 2015. We also undertook the Yellow Fish campaign in New Quay in 2013, to raise awareness with the local community about tipping pollutants down surface water drains and into rivers and streams. During 2014, NRW have met with Quay Fresh (Whelk meat processor) to identify pollution issues at site and discuss and advise on further pollution prevention measures. Bacterial loading levels have decreased considerably during 2014. Ongoing discussions will continue to further reduce the loading levels. Pollution prevention site visits will also take place at farms within the area to raise awareness of pollution to water courses.</p>
Rhyl	6.5%	Intestinal Enterococci	2013-2014	<p><b>Sources:</b> The sources are as they were last year - a mixture of human bacteria from Sewage Treatment Works (STWs) etc and agricultural run-off, especially in wet weather. Levels of bacteria in the River Clwyd are at acceptable levels and with UV and storm storage in place at Denbigh, there are no 'easy hits' left to reduce bacteria significantly through single source improvements.</p> <p><b>Actions:</b> The 2012 data which was particularly poor was removed at the end of the 2014 season under 'step change' due to Denbigh Storm Tanks coming on line in late 2012. This took the beach from 'Poor' to 'Sufficient', but only just. Small improvements have become more significant. A program of farm visits in the lower Clwyd is planned. The sewerage infrastructure is better than ever but we need to ensure that Dŵr Cymru are operating their assets according to their permits and best practice. The Environment Agency's Prediction and Discounting tool has been used at Rhyl but was not very successful at predicting accurately. The accuracy needs to be improved significantly in order to protect the public and to enable us to discount the poor samples.</p>

EC Bathing Water	Percentage Risk of Non-Compliance with rBWD Sufficient standard	Parameter most at risk	Data period	Likely Source of Microbial Contamination and NRW Actions
Rhyl East	1.1%	Intestinal Enterococci	2014 only	<b>Sources:</b> As Rhyl above. <b>Actions:</b> As Rhyl above.
Swansea Bay	0.4%	Intestinal Enterococci	2011-2014	<b>Sources:</b> The main sources of pollution are misconnections, Combined Sewer Overflows (CSOs) and urban diffuse pollution which enter the bay via numerous streams, rivers, highway drains and direct inputs. There is a strong relationship between local stream flow; solar radiation and tide levels; and the level of faecal indicator organisms (FIO) present at the designated sample point (DSP). <b>Actions:</b> The Smart Coasts FIO source apportionment data gathered in 2011 is used to target our resources specifically, starting with the most direct and polluted inputs. It has also been used to inform investment by Dŵr Cymru. Work done so far includes: Resolving misconnections in the Clyne Catchment through project work with the local authority and DCWW; Monitoring and regulation of sewerage assets within the catchment, particularly those we know impact on the DSP; Involvement in Asset Management Plan (AMP) decisions via Dŵr Cymru's Swansea Bay Solution which has resulted in re-direction of investment in key assets impacting directly on the DSP; Implementation of prediction and discounting using the Swansea Bay prediction model developed by INTERREG (European Regional Development Fund) funded Smart Coasts = Sustainable Communities project; Working with and funding Clear Streams, an initiative which 'aims to promote a healthier and cleaner water environment for the benefit of people, communities and wildlife.' On a more strategic level NRW's Swansea Environment Management (EM) team has provided input into the National Misconnection Strategy Group and the Connect Right website.
Sandy Haven	0.1%	Intestinal Enterococci	2012-2014	<b>Sources:</b> Diffuse agricultural pollution and possibly Herbrandston sewage works. <b>Actions:</b> A large poultry unit in the catchment which has an Environmental Permitting Regulations (EPR) permit is visited regularly by NRW. Surveys to be taken by bathing water project officer. Pre-season check by an NRW Environment Management (EM) officer. NRW to visit caravan sites to ensure adequate sewage disposal. Monitor bathing water compliance throughout the season.

Table 8: EC identified bathing waters: Risk of failure against the revised Bathing Water Directive based on historical sampling data.

Face value data, with discounting.  $\geq 50\%$  risk means it fails the class. Failures are shaded in yellow. An at risk parameter of Both means that the percentage risks are equal (but above 0%) for E. Coli and Intestinal Enterococci. An at risk parameter of Neither indicates that the risk for both parameters is 0%.

Welsh Govt/ Defra no.	Bathing water	Step change after season	2014 classification	Probability of exceeding standard - Intestinal Enterococci (IE)			Probability of exceeding standard - E. Coli			Excellent		Good		Sufficient	
				Excellent (%)	Good (%)	Sufficient (%)	Excellent (%)	Good (%)	Sufficient (%)	Risk (%)	At risk parameter	Risk (%)	At risk parameter	Risk (%)	At risk parameter
36100	Jacksons Bay	-	Good	86.7	0.0	0.0	68.1	0.0	0.0	86.7	IE	0.0	Neither	0.0	Neither
36200	Whitmore Bay Central	-	Excellent	0.6	0.0	0.0	0.1	0.0	0.0	0.6	IE	0.0	Neither	0.0	Neither
36300	Cold Knap	-	Excellent	0.0	0.0	0.0	0.0	0.0	0.0	0.0	Neither	0.0	Neither	0.0	Neither
36400	Southerndown	-	Excellent	3.0	0.0	0.0	0.0	0.0	0.0	3.0	IE	0.0	Neither	0.0	Neither
36500	Trecco Bay	-	Excellent	0.0	0.0	0.0	0.0	0.0	0.0	0.0	Neither	0.0	Neither	0.0	Neither
36600	Sandy Bay	-	Excellent	0.0	0.0	0.0	0.0	0.0	0.0	0.0	Neither	0.0	Neither	0.0	Neither
36700	Rest Bay	-	Excellent	0.0	0.0	0.0	0.0	0.0	0.0	0.0	Neither	0.0	Neither	0.0	Neither
36800	Aberafan Slip	-	Good	99.8	2.1	0.0	99.9	24.6	0.0	99.9	E. Coli	24.6	E. Coli	0.0	Neither
36900	Swansea Bay	-	Sufficient	100.0	54.6	0.4	100.0	37.3	0.0	100.0	Both	54.6	IE	0.4	IE
37000	Bracelet Bay	-	Excellent	0.0	0.0	0.0	0.0	0.0	0.0	0.0	Neither	0.0	Neither	0.0	Neither
37100	Limeslade	-	Good	87.7	0.1	0.0	0.0	0.0	0.0	87.7	IE	0.1	IE	0.0	Neither
37200	Langland West	-	Excellent	0.0	0.0	0.0	0.0	0.0	0.0	0.0	Neither	0.0	Neither	0.0	Neither
37300	Caswell Central	-	Excellent	0.0	0.0	0.0	0.0	0.0	0.0	0.0	Neither	0.0	Neither	0.0	Neither
37400	Oxwich West	-	Excellent	0.0	0.0	0.0	0.0	0.0	0.0	0.0	Neither	0.0	Neither	0.0	Neither
37500	Port Eynon West	-	Excellent	0.0	0.0	0.0	0.0	0.0	0.0	0.0	Neither	0.0	Neither	0.0	Neither
37600	Rhossili at Hillend	-	Excellent	0.0	0.0	0.0	0.0	0.0	0.0	0.0	Neither	0.0	Neither	0.0	Neither

Welsh Govt/ Defra no.	Bathing water	Step change after season	2014 classification	Probability of exceeding standard - Intestinal Enterococci (IE)			Probability of exceeding standard - E. Coli			Excellent		Good		Sufficient	
				Excellent (%)	Good (%)	Sufficient (%)	Excellent (%)	Good (%)	Sufficient (%)	Risk (%)	At risk parameter	Risk (%)	At risk parameter	Risk (%)	At risk parameter
37700	Pembrey	-	Excellent	0.0	0.0	0.0	0.0	0.0	0.0	0.0	Neither	0.0	Neither	0.0	Neither
37800	Pendine East	-	Excellent	0.0	0.0	0.0	0.0	0.0	0.0	0.0	Neither	0.0	Neither	0.0	Neither
37900	Amroth Central	-	Excellent	0.0	0.0	0.0	0.0	0.0	0.0	0.0	Neither	0.0	Neither	0.0	Neither
37940	Wisemans Bridge	-	Good	99.4	1.9	0.0	88.1	0.5	0.0	99.4	IE	1.9	IE	0.0	Neither
37980	Coppet Hall	-	Excellent	0.0	0.0	0.0	0.0	0.0	0.0	0.0	Neither	0.0	Neither	0.0	Neither
38000	Saundersfoot	-	Excellent	0.0	0.0	0.0	0.0	0.0	0.0	0.0	Neither	0.0	Neither	0.0	Neither
38100	Tenby North	-	Excellent	0.0	0.0	0.0	0.0	0.0	0.0	0.0	Neither	0.0	Neither	0.0	Neither
38150	Castle Beach Tenby	-	Excellent	1.2	0.0	0.0	0.0	0.0	0.0	1.2	IE	0.0	Neither	0.0	Neither
38200	Tenby South	-	Excellent	0.0	0.0	0.0	0.0	0.0	0.0	0.0	Neither	0.0	Neither	0.0	Neither
38210	Penally	-	Excellent	0.0	0.0	0.0	0.0	0.0	0.0	0.0	Neither	0.0	Neither	0.0	Neither
38220	Lydstep North Beach	-	Excellent	0.0	0.0	0.0	0.0	0.0	0.0	0.0	Neither	0.0	Neither	0.0	Neither
38230	Manorbier Beach	-	Excellent	0.0	0.0	0.0	0.0	0.0	0.0	0.0	Neither	0.0	Neither	0.0	Neither
38235	Freshwater East	-	Excellent	0.0	0.0	0.0	0.0	0.0	0.0	0.0	Neither	0.0	Neither	0.0	Neither
38238	Barafundle	-	Excellent	0.0	0.0	0.0	0.0	0.0	0.0	0.0	Neither	0.0	Neither	0.0	Neither
38240	Broadhaven South	-	Excellent	0.0	0.0	0.0	0.0	0.0	0.0	0.0	Neither	0.0	Neither	0.0	Neither
38248	Freshwater West	-	Excellent	0.0	0.0	0.0	0.0	0.0	0.0	0.0	Neither	0.0	Neither	0.0	Neither
38250	West Angle	-	Good	59.2	0.0	0.0	0.0	0.0	0.0	59.2	IE	0.0	Neither	0.0	Neither
38255	Sandy Haven	-	Good	99.9	20.0	0.1	70.4	0.1	0.0	99.9	IE	20.0	IE	0.1	IE
38260	Dale	-	Excellent	0.0	0.0	0.0	0.0	0.0	0.0	0.0	Neither	0.0	Neither	0.0	Neither

Welsh Govt/ Defra no.	Bathing water	Step change after season	2014 classification	Probability of exceeding standard - Intestinal Enterococci (IE)			Probability of exceeding standard - E. Coli			Excellent		Good		Sufficient	
				Excellent (%)	Good (%)	Sufficient (%)	Excellent (%)	Good (%)	Sufficient (%)	Risk (%)	At risk parameter	Risk (%)	At risk parameter	Risk (%)	At risk parameter
38280	Marloes Sands	-	Excellent	0.0	0.0	0.0	0.0	0.0	0.0	0.0	Neither	0.0	Neither	0.0	Neither
38295	Little Haven	-	Good	79.3	0.0	0.0	3.4	0.0	0.0	79.3	IE	0.0	Neither	0.0	Neither
38300	Broadhaven Central	-	Excellent	5.0	0.0	0.0	0.0	0.0	0.0	5.0	IE	0.0	Neither	0.0	Neither
38340	Druidston Haven	-	Excellent	0.0	0.0	0.0	0.0	0.0	0.0	0.0	Neither	0.0	Neither	0.0	Neither
38380	Nolton Haven	-	Good	99.9	14.6	0.0	73.4	0.1	0.0	99.9	IE	14.6	IE	0.0	Neither
38400	Newgale Central	-	Excellent	0.0	0.0	0.0	0.0	0.0	0.0	0.0	Neither	0.0	Neither	0.0	Neither
38460	Caerfai Bay	-	Excellent	0.0	0.0	0.0	0.0	0.0	0.0	0.0	Neither	0.0	Neither	0.0	Neither
38500	Whitesands Central	-	Excellent	0.0	0.0	0.0	0.0	0.0	0.0	0.0	Neither	0.0	Neither	0.0	Neither
38520	Aberiddy	-	Excellent	0.0	0.0	0.0	0.0	0.0	0.0	0.0	Neither	0.0	Neither	0.0	Neither
38540	Abermawr	-	Excellent	0.0	0.0	0.0	0.0	0.0	0.0	0.0	Neither	0.0	Neither	0.0	Neither
38600	Newport North	-	Excellent	46.9	0.0	0.0	49.5	0.0	0.0	49.5	E. Coli	0.0	Neither	0.0	Neither
38630	Poppit West	-	Good	1.8	0.0	0.0	65.4	0.0	0.0	65.4	E. Coli	0.0	Neither	0.0	Neither
38640	Mwnt	-	Excellent	0.0	0.0	0.0	0.0	0.0	0.0	0.0	Neither	0.0	Neither	0.0	Neither
38660	Aberporth	-	Excellent	34.7	0.0	0.0	0.0	0.0	0.0	34.7	IE	0.0	Neither	0.0	Neither
38670	Tresaith	-	Excellent	0.0	0.0	0.0	0.0	0.0	0.0	0.0	Neither	0.0	Neither	0.0	Neither
38675	Penbryn	-	Excellent	0.0	0.0	0.0	0.0	0.0	0.0	0.0	Neither	0.0	Neither	0.0	Neither
38680	Centre of Llangrannog Bay	-	Excellent	3.9	0.0	0.0	0.0	0.0	0.0	3.9	IE	0.0	Neither	0.0	Neither
38685	Cilborth	-	Excellent	0.0	0.0	0.0	0.0	0.0	0.0	0.0	Neither	0.0	Neither	0.0	Neither
38688	New Quay North	-	Sufficient	100.0	95.5	12.3	3.3	0.0	0.0	100.0	IE	95.5	IE	12.3	IE

Welsh Govt/ Defra no.	Bathing water	Step change after season	2014 classification	Probability of exceeding standard - Intestinal Enterococci (IE)			Probability of exceeding standard - E. Coli			Excellent		Good		Sufficient	
				Excellent (%)	Good (%)	Sufficient (%)	Excellent (%)	Good (%)	Sufficient (%)	Risk (%)	At risk parameter	Risk (%)	At risk parameter	Risk (%)	At risk parameter
38690	Newquay Harbour	-	Excellent	0.0	0.0	0.0	0.0	0.0	0.0	0.0	Neither	0.0	Neither	0.0	Neither
38700	New Quay	-	Excellent	33.1	0.0	0.0	0.0	0.0	0.0	33.1	IE	0.0	Neither	0.0	Neither
38750	Llanrhystud	-	Excellent	0.0	0.0	0.0	0.0	0.0	0.0	0.0	Neither	0.0	Neither	0.0	Neither
38800	Aberystwyth South	-	Good	99.8	2.0	0.0	99.6	5.5	0.0	99.8	IE	5.5	E. Coli	0.0	Neither
38900	Aberystwyth North	-	Excellent	25.7	0.0	0.0	2.7	0.0	0.0	25.7	IE	0.0	Neither	0.0	Neither
38920	Clarach South	-	Good	76.9	0.0	0.0	3.2	0.0	0.0	76.9	IE	0.0	Neither	0.0	Neither
39000	Borth (southern end)	-	Excellent	0.0	0.0	0.0	0.0	0.0	0.0	0.0	Neither	0.0	Neither	0.0	Neither
39050	Aberdyfi	-	Sufficient	100.0	47.1	0.2	100.0	99.6	27.1	100.0	Both	99.6	E. Coli	27.1	E. Coli
39100	Tywyn	-	Good	0.5	0.0	0.0	77.2	0.1	0.0	77.2	E. Coli	0.1	E. Coli	0.0	Neither
39200	Fairbourne	-	Excellent	0.0	0.0	0.0	0.1	0.0	0.0	0.1	E. Coli	0.0	Neither	0.0	Neither
39300	Barmouth	-	Excellent	0.0	0.0	0.0	0.0	0.0	0.0	0.0	Neither	0.0	Neither	0.0	Neither
39350	Talybont	-	Excellent	0.0	0.0	0.0	0.0	0.0	0.0	0.0	Neither	0.0	Neither	0.0	Neither
39360	Duffryn	-	Excellent	0.0	0.0	0.0	0.0	0.0	0.0	0.0	Neither	0.0	Neither	0.0	Neither
39400	Llandanwg Central	-	Excellent	0.0	0.0	0.0	7.5	0.0	0.0	7.5	E. Coli	0.0	Neither	0.0	Neither
39500	Harlech North	-	Excellent	0.0	0.0	0.0	0.0	0.0	0.0	0.0	Neither	0.0	Neither	0.0	Neither
39600	Craig Du Beach Central	-	Excellent	0.0	0.0	0.0	0.0	0.0	0.0	0.0	Neither	0.0	Neither	0.0	Neither
39700	Criccieth East	2012	Excellent	4.0	0.0	0.0	0.0	0.0	0.0	4.0	IE	0.0	Neither	0.0	Neither
39800	Pwllheli	-	Excellent	4.0	0.0	0.0	0.0	0.0	0.0	4.0	IE	0.0	Neither	0.0	Neither
39900	Abersoch South	-	Excellent	4.0	0.0	0.0	0.0	0.0	0.0	4.0	IE	0.0	Neither	0.0	Neither

Welsh Govt/ Defra no.	Bathing water	Step change after season	2014 classification	Probability of exceeding standard - Intestinal Enterococci (IE)			Probability of exceeding standard - E. Coli			Excellent		Good		Sufficient	
				Excellent (%)	Good (%)	Sufficient (%)	Excellent (%)	Good (%)	Sufficient (%)	Risk (%)	At risk parameter	Risk (%)	At risk parameter	Risk (%)	At risk parameter
39920	Porth Neigwl	-	Excellent	0.0	0.0	0.0	0.0	0.0	0.0	0.0	Neither	0.0	Neither	0.0	Neither
39950	Aberdaron	-	Excellent	0.4	0.0	0.0	0.0	0.0	0.0	0.4	IE	0.0	Neither	0.0	Neither
39960	Morfa Nefyn	-	Good	53.1	0.0	0.0	0.0	0.0	0.0	53.1	IE	0.0	Neither	0.0	Neither
39970	Morfa Dinlle	-	Excellent	0.0	0.0	0.0	0.0	0.0	0.0	0.0	Neither	0.0	Neither	0.0	Neither
39975	Llyn Padarn	-	Excellent	0.0	0.0	0.0	0.0	0.0	0.0	0.0	Neither	0.0	Neither	0.0	Neither
39980	Llanddwyn	-	Excellent	0.0	0.0	0.0	0.0	0.0	0.0	0.0	Neither	0.0	Neither	0.0	Neither
39985	Aberffraw	-	Excellent	0.0	0.0	0.0	0.0	0.0	0.0	0.0	Neither	0.0	Neither	0.0	Neither
39990	Rhosneigr	-	Excellent	0.0	0.0	0.0	0.0	0.0	0.0	0.0	Neither	0.0	Neither	0.0	Neither
39993	Silver Bay, Rhoscolyn	-	Excellent	0.0	0.0	0.0	0.0	0.0	0.0	0.0	Neither	0.0	Neither	0.0	Neither
39995	Borth Wen	-	Excellent	1.0	0.0	0.0	0.0	0.0	0.0	1.0	IE	0.0	Neither	0.0	Neither
40000	Trearddur Bay	-	Excellent	0.0	0.0	0.0	0.0	0.0	0.0	0.0	Neither	0.0	Neither	0.0	Neither
40010	Porth Dafarch	-	Excellent	8.7	0.0	0.0	0.0	0.0	0.0	8.7	IE	0.0	Neither	0.0	Neither
40030	Church Bay	-	Excellent	0.0	0.0	0.0	0.0	0.0	0.0	0.0	Neither	0.0	Neither	0.0	Neither
40050	Cemaes	-	Sufficient	100.0	97.8	21.8	100.0	95.8	6.0	100.0	Both	97.8	IE	21.8	IE
40085	Traeth Lligwy	-	Good	99.4	4.7	0.0	0.1	0.0	0.0	99.4	IE	4.7	IE	0.0	Neither
40100	Benllech	-	Excellent	0.0	0.0	0.0	0.0	0.0	0.0	0.0	Neither	0.0	Neither	0.0	Neither
40105	St. Davids, Benllech	-	Excellent	0.0	0.0	0.0	0.0	0.0	0.0	0.0	Neither	0.0	Neither	0.0	Neither
40140	Llanddona	-	Excellent	0.0	0.0	0.0	0.0	0.0	0.0	0.0	Neither	0.0	Neither	0.0	Neither
40170	Llanfairfechan	-	Excellent	34.4	0.0	0.0	20.4	0.0	0.0	34.4	IE	0.0	Neither	0.0	Neither
40180	Penmaenmawr	-	Good	99.9	4.3	0.0	67.8	0.0	0.0	99.9	IE	4.3	IE	0.0	Neither



Welsh Govt/ Defra no.	Bathing water	Step change after season	2014 classification	Probability of exceeding standard - Intestinal Enterococci (IE)			Probability of exceeding standard - E. Coli			Excellent		Good		Sufficient	
				Excellent (%)	Good (%)	Sufficient (%)	Excellent (%)	Good (%)	Sufficient (%)	Risk (%)	At risk parameter	Risk (%)	At risk parameter	Risk (%)	At risk parameter
40200	Llandudno West	2012	Excellent	0.0	0.0	0.0	0.0	0.0	0.0	0.0	Neither	0.0	Neither	0.0	Neither
40300	Llandudno North	-	Good	99.7	0.2	0.0	1.7	0.0	0.0	99.7	IE	0.2	IE	0.0	Neither
40400	Colwyn Bay	-	Excellent	0.0	0.0	0.0	0.2	0.0	0.0	0.2	E. Coli	0.0	Neither	0.0	Neither
40450	Abergele (Pensarn)	-	Good	99.9	2.3	0.0	71.0	0.0	0.0	99.9	IE	2.3	IE	0.0	Neither
40500	Sandy Cove	-	Excellent	45.3	0.0	0.0	12.5	0.0	0.0	45.3	IE	0.0	Neither	0.0	Neither
40550	Marine Lake, Rhyl	-	Excellent	3.3	0.0	0.0	0.0	0.0	0.0	3.3	IE	0.0	Neither	0.0	Neither
40600	Rhyl	2012	Sufficient	100.0	64.1	6.5	96.9	3.8	0.0	100.0	IE	64.1	IE	6.5	IE
40650	Rhyl East	-	Good	96.5	17.3	1.1	92.3	16.5	0.4	96.5	IE	17.3	IE	1.1	IE
40700	Prestatyn Central	2012	Excellent	41.4	0.0	0.0	0.0	0.0	0.0	41.4	IE	0.0	Neither	0.0	Neither

Table 9: EC identified bathing waters: projected revised Bathing Water Directive classifications using 2011 to 2014 data, compared to previous years.

Bathing Water	Welsh Government Number	2004 (2001 to 2004)	2005 (2002 to 2005)	2006 (2003 to 2006)	2007 (2004 to 2007)	2008 (2005 to 2008)	2009 (2006 to 2009)	2010 (2007 to 2010)	2011 (2008 to 2011)	2012 (2009 to 2012)	2013 (2010 to 2013)	2014 (2011 to 2014)
Jackson's Bay Barry Island	36100	Sufficient	Sufficient	Sufficient	Sufficient	Sufficient	Sufficient	Sufficient	Sufficient	Good	Good	Good
Whitmore Bay Barry Island	36200	Sufficient	Good	Good	Good	Good	Good	Good	Good	Good	Good	Excellent
Cold Knap Barry	36300	Excellent	Excellent	Excellent	Excellent	Good	Good	Excellent	Excellent	Excellent	Excellent	Excellent
Southerndown	36400	Good	Excellent	Excellent	Excellent	Good	Good	Good	Good	Excellent	Excellent	Excellent
Trecco Bay Porthcawl	36500	Excellent	Excellent	Excellent	Excellent	Excellent	Good	Excellent	Excellent	Excellent	Excellent	Excellent
Sandy Bay Porthcawl	36600	Excellent	Excellent	Excellent	Excellent	Excellent	Excellent	Excellent	Excellent	Excellent	Excellent	Excellent
Rest Bay Porthcawl	36700	Excellent	Excellent	Excellent	Excellent	Excellent	Excellent	Excellent	Excellent	Excellent	Excellent	Excellent
Aberafan	36800	Good	Good	Good	Good	Good	Good	Good	Sufficient	Sufficient	Sufficient	Good
Swansea Bay	36900	Sufficient	Sufficient	Sufficient	Sufficient	Poor	Poor	Poor	Poor	Poor	Sufficient	Sufficient
Bracelet Bay	37000	Excellent	Excellent	Excellent	Excellent	Excellent	Excellent	Excellent	Excellent	Excellent	Excellent	Excellent
Limeslade Bay	37100	Good	Excellent	Excellent	Excellent	Excellent	Excellent	Excellent	Excellent	Excellent	Excellent	Good
Langland Bay	37200	Excellent	Excellent	Excellent	Excellent	Excellent	Excellent	Excellent	Excellent	Excellent	Excellent	Excellent
Caswell Bay	37300	Excellent	Excellent	Excellent	Excellent	Excellent	Excellent	Excellent	Excellent	Excellent	Excellent	Excellent
Oxwich Bay	37400	Excellent	Excellent	Excellent	Excellent	Excellent	Excellent	Excellent	Excellent	Excellent	Excellent	Excellent
Port Eynon Bay	37500	Excellent	Excellent	Excellent	Excellent	Excellent	Excellent	Excellent	Excellent	Excellent	Excellent	Excellent
Rhossili	37600	Excellent	Excellent	Excellent	Excellent	Excellent	Excellent	Excellent	Excellent	Excellent	Excellent	Excellent
Pembrey	37700	Excellent	Excellent	Excellent	Excellent	Good	Good	Good	Good	Excellent	Excellent	Excellent
Pendine	37800	Excellent	Excellent	Good	Good	Good	Good	Good	Good	Good	Excellent	Excellent
Amroth Central	37900	Excellent	Excellent	Excellent	Excellent	Good	Good	Good	Excellent	Excellent	Excellent	Excellent
Wiseman's Bridge	37940									Sufficient	Sufficient	Good
Coppet Hall	37980	Excellent	Excellent	Excellent	Excellent	Excellent	Excellent	Excellent	Excellent	Excellent	Excellent	Excellent
Saundersfoot	38000	Excellent	Excellent	Excellent	Excellent	Excellent	Excellent	Excellent	Excellent	Excellent	Excellent	Excellent
Tenby North	38100	Excellent	Excellent	Excellent	Excellent	Excellent	Excellent	Excellent	Excellent	Excellent	Excellent	Excellent
Castle Beach, Tenby	38150	Excellent	Excellent	Excellent	Excellent	Excellent	Excellent	Excellent	Excellent	Excellent	Good	Excellent
Tenby South	38200	Excellent	Excellent	Excellent	Excellent	Excellent	Excellent	Excellent	Excellent	Excellent	Excellent	Excellent

Bathing Water	Welsh Government Number	2004 (2001 to 2004)	2005 (2002 to 2005)	2006 (2003 to 2006)	2007 (2004 to 2007)	2008 (2005 to 2008)	2009 (2006 to 2009)	2010 (2007 to 2010)	2011 (2008 to 2011)	2012 (2009 to 2012)	2013 (2010 to 2013)	2014 (2011 to 2014)
Penally	38210									Excellent	Excellent	Excellent
Lydstep	38220	Excellent	Excellent	Excellent	Excellent	Excellent	Excellent	Excellent	Excellent	Excellent	Excellent	Excellent
Manorbier	38230	Excellent	Excellent	Excellent	Excellent	Excellent	Excellent	Excellent	Excellent	Excellent	Excellent	Excellent
Freshwater East	38235	Excellent	Excellent	Excellent	Excellent	Excellent	Excellent	Excellent	Excellent	Excellent	Excellent	Excellent
Barafundle	38238	Excellent	Excellent	Excellent	Excellent	Excellent	Excellent	Excellent	Excellent	Excellent	Excellent	Excellent
Broad Haven (South)	38240	Excellent	Excellent	Excellent	Excellent	Excellent	Excellent	Excellent	Excellent	Excellent	Excellent	Excellent
Freshwater West	38248									Excellent	Excellent	Excellent
West Angle	38250	Good	Good	Good	Excellent	Excellent	Excellent	Excellent	Excellent	Good	Good	Good
Sandy Haven	38255									Good	Good	Good
Dale	38260	Excellent	Excellent	Excellent	Excellent	Excellent	Excellent	Excellent	Excellent	Excellent	Excellent	Excellent
Marloes Sands	38280	Excellent	Excellent	Excellent	Excellent	Excellent	Excellent	Excellent	Excellent	Excellent	Excellent	Excellent
Little Haven	38295									Excellent	Excellent	Good
Broad Haven (Central)	38300	Excellent	Excellent	Excellent	Excellent	Good	Excellent	Excellent	Excellent	Excellent	Excellent	Excellent
Druidston Haven	38340									Excellent	Excellent	Excellent
Nolton Haven	38380									Sufficient	Excellent	Good
Newgale	38400	Excellent	Excellent	Excellent	Excellent	Excellent	Excellent	Excellent	Excellent	Excellent	Excellent	Excellent
Caerfai	38460	Excellent	Excellent	Excellent	Excellent	Excellent	Excellent	Excellent	Excellent	Excellent	Excellent	Excellent
Whitesands	38500	Excellent	Excellent	Excellent	Excellent	Excellent	Excellent	Excellent	Excellent	Excellent	Excellent	Excellent
Aberiddy	38520									Excellent	Excellent	Excellent
Abermawr	38540									Excellent	Excellent	Excellent
Newport North	38600	Good	Good	Sufficient	Good	Sufficient	Good	Good	Good	Good	Good	Excellent
Poppit West	38630	Excellent	Excellent	Excellent	Good	Good	Good	Excellent	Excellent	Good	Good	Good
Mwnt	38640								Not classified	Excellent	Excellent	Excellent
Aberporth	38660	Excellent	Good	Good	Excellent	Excellent	Excellent	Good	Excellent	Excellent	Excellent	Excellent
Tresaith	38670	Excellent	Excellent	Excellent	Excellent	Excellent	Excellent	Excellent	Excellent	Excellent	Excellent	Excellent
Penbryn	38675								Not classified	Excellent	Excellent	Excellent
Llangrannog	38680	Poor	Poor	Sufficient	Good	Good	Good	Good	Good	Good	Good	Excellent
Cilborth	38685								Not classified	Excellent	Excellent	Excellent

Bathing Water	Welsh Government Number	2004 (2001 to 2004)	2005 (2002 to 2005)	2006 (2003 to 2006)	2007 (2004 to 2007)	2008 (2005 to 2008)	2009 (2006 to 2009)	2010 (2007 to 2010)	2011 (2008 to 2011)	2012 (2009 to 2012)	2013 (2010 to 2013)	2014 (2011 to 2014)
New Quay North	38688								Not classified	Sufficient	Sufficient	Sufficient
New Quay Harbour	38690	Excellent	Excellent	Excellent	Excellent	Excellent	Excellent	Excellent	Excellent	Excellent	Excellent	Excellent
Traeth Gwyn New Quay	38700	Excellent	Excellent	Excellent	Excellent	Excellent	Excellent	Excellent	Excellent	Excellent	Excellent	Excellent
Llanrhystud	38750								Not classified	Excellent	Excellent	Excellent
Aberystwyth South	38800	Sufficient	Good	Good	Good	Good	Sufficient	Sufficient	Sufficient	Good	Good	Good
Aberystwyth North	38900	Good	Good	Excellent	Excellent	Good	Good	Sufficient	Sufficient	Good	Good	Excellent
Clarach South	38920	Sufficient	Good	Excellent	Excellent	Excellent	Good	Good	Good	Good	Good	Good
Borth	39000	Excellent	Excellent	Excellent	Excellent	Excellent	Excellent	Excellent	Excellent	Excellent	Excellent	Excellent
Aberdyfi	39050	Poor	Poor	Sufficient	Sufficient	Sufficient	Poor	Poor	Sufficient	Poor	Poor	Sufficient
Tywyn	39100	Sufficient	Good	Excellent	Excellent	Excellent	Good	Not classified	Not classified	Good	Good	Good
Fairbourne	39200	Good	Excellent	Excellent	Excellent	Excellent	Excellent	Excellent	Excellent	Excellent	Excellent	Excellent
Barmouth	39300	Excellent	Excellent	Excellent	Excellent	Excellent	Good	Good	Good	Good	Excellent	Excellent
Tal-y-Bont	39350	Excellent	Excellent	Excellent	Excellent	Excellent	Excellent	Good	Excellent	Excellent	Excellent	Excellent
Dyffryn (Llanendwyn)	39360	Excellent	Excellent	Excellent	Excellent	Excellent	Excellent	Good	Excellent	Excellent	Excellent	Excellent
Llandanwg	39400	Sufficient	Good	Good	Good	Sufficient	Sufficient	Sufficient	Sufficient	Good	Good	Excellent
Harlech	39500	Excellent	Excellent	Excellent	Excellent	Excellent	Excellent	Excellent	Excellent	Excellent	Excellent	Excellent
Craig Du Beach Central	39600	Excellent	Excellent	Excellent	Excellent	Excellent	Excellent	Excellent	Excellent	Excellent	Excellent	Excellent
Criccieth	39700	Good	Excellent	Excellent	Excellent	Good	Good	Good	Good	Sufficient	Good	Excellent
Pwllheli	39800	Excellent	Excellent	Excellent	Excellent	Excellent	Excellent	Excellent	Excellent	Excellent	Excellent	Excellent
Abersoch	39900	Excellent	Excellent	Excellent	Excellent	Excellent	Excellent	Excellent	Excellent	Excellent	Excellent	Excellent
Porth Neigwl	39920									Excellent	Excellent	Excellent
Aberdaron	39950								Not classified	Good	Excellent	Excellent
Morfa Nefyn	39960									Excellent	Excellent	Good
Morfa Dinlle	39970	Excellent	Excellent	Excellent	Excellent	Excellent	Excellent	Excellent	Excellent	Excellent	Excellent	Excellent
Llyn Padarn	39975											Excellent

Bathing Water	Welsh Government Number	2004 (2001 to 2004)	2005 (2002 to 2005)	2006 (2003 to 2006)	2007 (2004 to 2007)	2008 (2005 to 2008)	2009 (2006 to 2009)	2010 (2007 to 2010)	2011 (2008 to 2011)	2012 (2009 to 2012)	2013 (2010 to 2013)	2014 (2011 to 2014)
Llanddwyn	39980	Excellent	Excellent	Excellent	Excellent	Excellent	Excellent	Excellent	Excellent	Excellent	Excellent	Excellent
Aberffraw	39985	Excellent	Excellent	Excellent	Excellent	Excellent	Excellent	Excellent	Excellent	Excellent	Excellent	Excellent
Rhosneigr	39990	Excellent	Excellent	Excellent	Excellent	Excellent	Excellent	Excellent	Excellent	Excellent	Excellent	Excellent
Silver Bay Rhoscolyn	39993		Not classified	Not classified	Not classified	Excellent	Excellent	Excellent	Excellent	Excellent	Excellent	Excellent
Borth Wen	39995	Not classified	Not classified	Excellent	Excellent	Excellent	Excellent	Excellent	Excellent	Excellent	Excellent	Excellent
Trearddur Bay	40000	Excellent	Excellent	Excellent	Excellent	Excellent	Excellent	Excellent	Excellent	Excellent	Excellent	Excellent
Porth Dafarch	40010	Excellent	Excellent	Excellent	Excellent	Excellent	Excellent	Excellent	Excellent	Excellent	Excellent	Excellent
Church Bay	40030	Not classified	Not classified	Excellent	Excellent	Excellent	Excellent	Excellent	Excellent	Excellent	Excellent	Excellent
Cemaes	40050	Sufficient	Sufficient	Sufficient	Poor	Poor	Poor	Poor	Sufficient	Sufficient	Sufficient	Sufficient
Traeth Lligwy	40085	Not classified	Not classified	Excellent	Excellent	Excellent	Excellent	Excellent	Excellent	Good	Good	Good
Benllech	40100	Good	Excellent	Excellent	Excellent	Excellent	Excellent	Excellent	Excellent	Excellent	Excellent	Excellent
St Davids - Benllech	40105		Not classified	Not classified	Not classified	Excellent	Excellent	Excellent	Excellent	Excellent	Excellent	Excellent
Llanddona	40140	Excellent	Excellent	Excellent	Excellent	Excellent	Excellent	Excellent	Excellent	Excellent	Excellent	Excellent
Llanfairfechan	40170					Not classified	Not classified	Not classified	Good	Good	Good	Excellent
Penmaenmawr	40180	Sufficient	Good	Good	Excellent	Excellent	Excellent	Excellent	Good	Good	Good	Good
Llandudno West Shore	40200	Sufficient	Good	Good	Good	Good	Good	Good	Good	Poor	Poor	Excellent
Llandudno North Shore	40300	Sufficient	Sufficient	Sufficient	Good	Good	Good	Excellent	Good	Excellent	Good	Good
Colwyn Bay	40400	Poor	Sufficient	Sufficient	Good	Sufficient	Sufficient	Sufficient	Good	Good	Good	Excellent
Abergele (Pensarn)	40450								Not classified	Good	Good	Good
Kinmel Bay (Sandy Cove)	40500	Sufficient	Good	Good	Sufficient	Good	Good	Good	Excellent	Excellent	Good	Excellent
Marine Lake, Rhyl	40550									Good	Excellent	Excellent
Rhyl	40600	Poor	Sufficient	Poor	Poor	Poor	Poor	Sufficient	Sufficient	Poor	Poor	Sufficient

Bathing Water	Welsh Government Number	2004 (2001 to 2004)	2005 (2002 to 2005)	2006 (2003 to 2006)	2007 (2004 to 2007)	2008 (2005 to 2008)	2009 (2006 to 2009)	2010 (2007 to 2010)	2011 (2008 to 2011)	2012 (2009 to 2012)	2013 (2010 to 2013)	2014 (2011 to 2014)
Rhyl East	40650											Good
Prestatyn	40700	Sufficient	Good	Good	Good	Good	Good	Good	Good	Good	Good	Excellent

<b>Excellent</b>	49	53	58	60	55	52	53	56	68	70	79
<b>Good</b>	9	14	11	12	17	20	17	15	22	22	18
<b>Sufficient</b>	13	6	8	4	5	4	6	8	6	5	5
<b>Poor</b>	4	2	1	2	3	4	3	1	4	3	0
<b>Total</b>	<b>75</b>	<b>75</b>	<b>78</b>	<b>78</b>	<b>80</b>	<b>80</b>	<b>79</b>	<b>80</b>	<b>100</b>	<b>100</b>	<b>102</b>

Up until 2011 bathing waters were not classified unless they had four years of data (for example if they had been closed for a season or designated for less than four years). This ceased to apply in 2012 when the rBWD came in as a bathing water can now be classified if it has at least 16 samples.

Borth was sampled at a temporary sample point in 2011 and 2013; data from the permanent sample point were used for 2010 and 2012 and from the temporary one for 2011 and 2013.

Colwyn Bay's sample point moved in 2011; data from the old sample point were used for 2010 and from the new one for 2011-2013.

Step change: At the end of the 2014 bathing season four bathing waters had step change applied after the 2012 season: Criccieth, Llandudno West Shore, Rhyl and Prestatyn.

Table 10: Blue Flag award beaches 1988 to 2014.  
 Y indicates that the beach was awarded a Blue Flag in that year.

Welsh Government Number	Bathing Water	Local Authority	1988	1989	1990	1991	1992	1993	1994	1995	1996	1997	1998	1999	2000	2001	2002	2003	2004	2005	2006	2007	2008	2009	2010	2011	2012	2013	2014
36100	Jackson's Bay Barry Island	Vale of Glamorgan																											
36200	Whitmore Bay Barry Island	Vale of Glamorgan																			Y	Y	Y	Y	Y	Y	Y		
36300	Cold Knap Barry	Vale of Glamorgan																											
36400	Southerndown	Vale of Glamorgan																	Y	Y	Y								
36500	Trecco Bay Porthcawl	Bridgend																	Y	Y	Y	Y	Y	Y	Y	Y	Y	Y	Y
36600	Sandy Bay Porthcawl	Bridgend																											
36700	Rest Bay Porthcawl	Bridgend											Y	Y	Y	Y	Y	Y	Y	Y	Y	Y	Y	Y	Y	Y	Y	Y	Y
36800	Aberafan	Neath Port Talbot																					Y	Y	Y	Y			
36900	Swansea Bay	Swansea																											
37000	Bracelet Bay	Swansea													Y	Y	Y	Y	Y	Y	Y	Y	Y	Y	Y	Y	Y	Y	Y
37100	Limeslade Bay	Swansea																											
37200	Langland Bay	Swansea													Y		Y	Y	Y	Y	Y	Y	Y	Y	Y	Y	Y	Y	Y
37300	Caswell Bay	Swansea											Y		Y	Y	Y	Y	Y	Y	Y	Y	Y	Y	Y	Y	Y	Y	Y
37400	Oxwich Bay	Swansea																											
37500	Port Eynon Bay	Swansea										Y	Y	Y	Y	Y	Y	Y	Y	Y	Y	Y	Y	Y	Y	Y	Y	Y	Y
37600	Rhossili	Swansea																											
37700	Pembrey	Carmarthenshire	Y		Y		Y	Y	Y		Y	Y			Y	Y	Y	Y	Y	Y	Y	Y	Y		Y	Y	Y	Y	Y
37800	Pendine	Carmarthenshire																				Y	Y		Y				
37900	Amroth Central	Pembrokeshire												Y	Y		Y	Y	Y	Y	Y	Y			Y	Y	Y	Y	Y
37940	Wiseman's Bridge	Pembrokeshire																											
37980	Coppet Hall	Pembrokeshire																						Y	Y	Y	Y	Y	Y
38000	Saundersfoot	Pembrokeshire												Y			Y	Y	Y	Y	Y	Y	Y	Y	Y	Y	Y	Y	Y
38100	Tenby North	Pembrokeshire					Y				Y	Y	Y	Y			Y	Y	Y	Y	Y	Y	Y	Y	Y	Y	Y	Y	Y
38150	Castle Beach, Tenby	Pembrokeshire													Y	Y	Y	Y	Y	Y	Y	Y	Y	Y	Y	Y	Y	Y	Y
38200	Tenby South	Pembrokeshire													Y	Y	Y	Y	Y	Y	Y	Y	Y	Y	Y	Y	Y	Y	Y
38210	Penally	Pembrokeshire																											
38220	Lydstep	Pembrokeshire											Y	Y	Y	Y	Y	Y	Y	Y	Y	Y	Y	Y	Y	Y	Y	Y	Y
38230	Manorbier	Pembrokeshire																											

Welsh Government Number	Bathing Water	Local Authority	1988	1989	1990	1991	1992	1993	1994	1995	1996	1997	1998	1999	2000	2001	2002	2003	2004	2005	2006	2007	2008	2009	2010	2011	2012	2013	2014
38235	Freshwater East	Pembrokeshire																											
38238	Barafundle	Pembrokeshire																											
38240	Broad Haven (South)	Pembrokeshire																											
38248	Freshwater West	Pembrokeshire																											
38250	West Angle	Pembrokeshire																											
38255	Sandy Haven	Pembrokeshire																											
38260	Dale	Pembrokeshire																		Y	Y	Y	Y	Y	Y	Y	Y	Y	Y
38280	Marloes Sands	Pembrokeshire																											
38295	Little Haven	Pembrokeshire																											
38300	Broad Haven (Central)	Pembrokeshire																		Y	Y	Y	Y		Y	Y	Y	Y	Y
38340	Druidston Haven	Pembrokeshire																											
38380	Nolton Haven	Pembrokeshire																											
38400	Newgale	Pembrokeshire											Y	Y	Y	Y	Y	Y	Y	Y	Y	Y	Y	Y	Y	Y	Y	Y	Y
38460	Caerfai	Pembrokeshire																											
38500	Whitesands	Pembrokeshire						Y	Y		Y	Y	Y	Y	Y	Y	Y	Y	Y	Y	Y	Y	Y	Y	Y	Y	Y	Y	Y
38520	Abereddy	Pembrokeshire																											
38540	Abermawr	Pembrokeshire																											
38600	Newport North	Pembrokeshire																					Y		Y	Y			
38630	Poppit West	Pembrokeshire													Y	Y	Y	Y	Y	Y	Y	Y	Y	Y	Y	Y	Y		
38640	Mwnt	Ceredigion																											
38660	Aberporth	Ceredigion													Y	Y	Y	Y	Y	Y	Y	Y		Y	Y	Y	Y	Y	Y
38670	Tresaith	Ceredigion													Y	Y	Y	Y	Y		Y	Y		Y	Y	Y	Y	Y	Y
38675	Penbryn	Ceredigion																											
38680	Llangrannog	Ceredigion																			Y	Y		Y	Y	Y	Y		
38685	Cilborth	Ceredigion																											Y
38688	New Quay North	Ceredigion																											
38690	New Quay Harbour	Ceredigion												Y	Y	Y	Y	Y	Y	Y	Y	Y	Y	Y	Y	Y	Y	Y	Y
38700	Traeth Gwyn New Quay	Ceredigion																											
38750	Llanrhystud	Ceredigion																											
38800	Aberystwyth South	Ceredigion																Y	Y		Y	Y	Y			Y			
38900	Aberystwyth North	Ceredigion										Y			Y				Y	Y	Y	Y	Y				Y		
38920	Clarach South	Ceredigion																											



Welsh Government Number	Bathing Water	Local Authority	1988	1989	1990	1991	1992	1993	1994	1995	1996	1997	1998	1999	2000	2001	2002	2003	2004	2005	2006	2007	2008	2009	2010	2011	2012	2013	2014	
39000	Borth	Ceredigion													Y		Y		Y	Y	Y	Y	Y	Y		Y	Y	Y		
39050	Aberdyfi	Gwynedd																			Y	Y								
39100	Tywyn	Gwynedd										Y							Y	Y	Y	Y	Y	Y			Y			
39200	Fairbourne	Gwynedd																Y	Y	Y	Y	Y	Y	Y	Y	Y				
39300	Barmouth	Gwynedd										Y	Y		Y	Y	Y	Y	Y	Y	Y	Y	Y		Y	Y	Y		Y	
39350	Tal-y-Bont	Gwynedd																												
39360	Dyffryn (Llanendwyn)	Gwynedd																												
39400	Llandanwg	Gwynedd																												
39500	Harlech	Gwynedd																												
39600	Craig Du Beach Central	Gwynedd																										Y	Y	
39700	Criccieth	Gwynedd																Y	Y	Y	Y	Y			Y	Y				
39800	Pwllheli	Gwynedd										Y	Y		Y		Y	Y	Y	Y	Y	Y	Y	Y	Y	Y	Y	Y	Y	
39900	Abersoch	Gwynedd											Y				Y	Y	Y	Y	Y	Y	Y	Y	Y	Y	Y	Y	Y	
39920	Porth Neigwl	Gwynedd																												
39950	Aberdaron	Gwynedd																									Y		Y	
39960	Morfa Nefyn	Gwynedd																												
39970	Morfa Dinlle	Gwynedd								Y			Y					Y	Y	Y	Y	Y	Y	Y	Y	Y	Y	Y	Y	
39975	Llyn Padarn	Gwynedd																												
39980	Llanddwyn	Anglesey										Y	Y	Y	Y	Y	Y	Y	Y	Y	Y	Y	Y	Y	Y	Y	Y	Y	Y	
39985	Aberffraw	Anglesey																												
39990	Rhosneigr	Anglesey																												
39993	Silver Bay Rhoscolyn	Anglesey																												
39995	Borth Wen	Anglesey																												
40000	Trearddur Bay	Anglesey								Y	Y			Y			Y	Y		Y	Y	Y	Y	Y	Y	Y	Y	Y	Y	
40010	Porth Dafarch	Anglesey												Y			Y	Y	Y	Y	Y	Y	Y	Y	Y	Y	Y	Y	Y	
40030	Church Bay	Anglesey																					Y	Y	Y	Y	Y	Y	Y	Y
40050	Cemaes	Anglesey																	Y											
40085	Traeth Lligwy	Anglesey																												
40100	Benllech	Anglesey																Y	Y	Y	Y	Y	Y	Y	Y	Y	Y	Y	Y	Y
40105	St Davids - Benllech	Anglesey																												
40140	Llanddona	Anglesey											Y		Y	Y	Y	Y	Y	Y	Y	Y	Y	Y	Y	Y	Y	Y	Y	
40170	Llanfairfechan	Conwy																						Y	Y		Y			

Welsh Government Number	Bathing Water	Local Authority	1988	1989	1990	1991	1992	1993	1994	1995	1996	1997	1998	1999	2000	2001	2002	2003	2004	2005	2006	2007	2008	2009	2010	2011	2012	2013	2014
40180	Penmaenmawr	Conwy														Y				Y	Y	Y	Y	Y	Y		Y		
40200	Llandudno West Shore	Conwy																Y			Y	Y	Y		Y				
40300	Llandudno North Shore	Conwy																Y			Y	Y	Y	Y	Y	Y		Y	
40400	Colwyn Bay	Conwy																Y		Y			Y				Y		
40450	Abergele (Pensarn)	Conwy																									Y		
40500	Kinmel Bay (Sandy Cove)	Conwy																											
40550	Marine Lake, Rhyl	Denbighshire																											
40600	Rhyl	Denbighshire																											
40650	Rhyl East	Denbighshire																											
40700	Prestatyn	Denbighshire																		Y		Y	Y	Y	Y	Y	Y		
<b>Total Number of Blue Flags</b>			<b>1</b>	<b>0</b>	<b>1</b>	<b>0</b>	<b>2</b>	<b>2</b>	<b>2</b>	<b>2</b>	<b>4</b>	<b>9</b>	<b>13</b>	<b>12</b>	<b>22</b>	<b>18</b>	<b>26</b>	<b>33</b>	<b>35</b>	<b>38</b>	<b>43</b>	<b>44</b>	<b>42</b>	<b>38</b>	<b>45</b>	<b>41</b>	<b>43</b>	<b>33</b>	<b>34</b>

Chart 5: Blue Flag awards 1995 to 2014

### Blue Flag Beaches in Wales 1995-2014

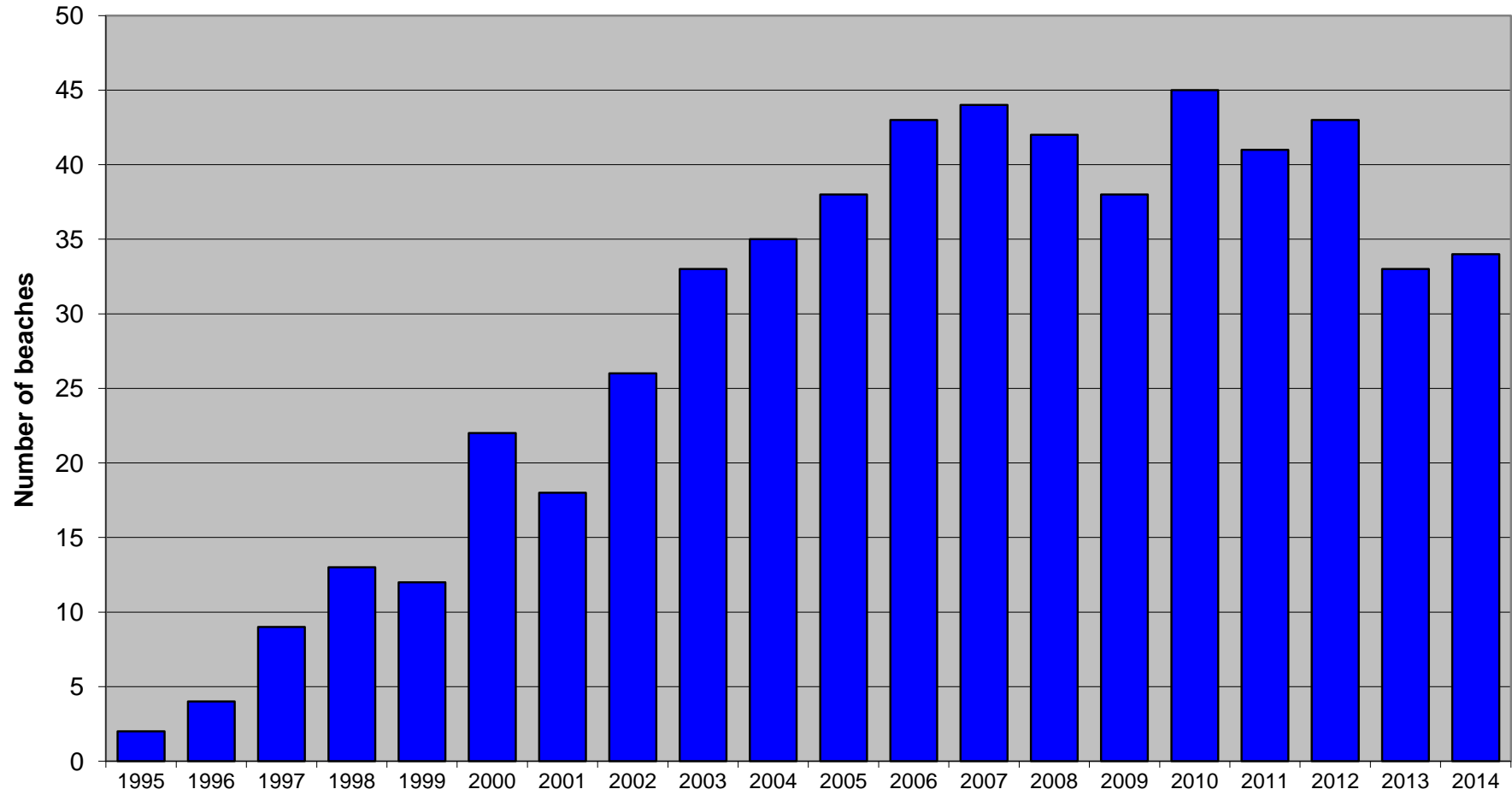


Table 11: Green Coast Award beaches 2014.

<b>Bathing Water</b>	<b>Council</b>	<b>Designated?</b>
Penally	Pembrokeshire	Yes
Priory Bay, Caldy Island	Pembrokeshire	No
Manorbier	Pembrokeshire	Yes
Freshwater East	Pembrokeshire	Yes
Barafundle	Pembrokeshire	Yes
Broadhaven South	Pembrokeshire	Yes
Westdale	Pembrokeshire	No
Marloes	Pembrokeshire	Yes
Martin's Haven	Pembrokeshire	No
Druidston Haven	Pembrokeshire	Yes
Abereddy	Pembrokeshire	Yes
Cwm yr Eglwys	Pembrokeshire	No
Mwnt	Ceredigion	Yes
Penbryn	Ceredigion	Yes
Llanrhystyd	Ceredigion	Yes
Fairbourne	Gwynedd	Yes
Dyffryn (Llanendwyn)	Gwynedd	Yes
Harlech	Gwynedd	Yes
Porth Neigwl	Gwynedd	Yes
Aberffraw	Anglesey	Yes
Porth Trecastell	Anglesey	No
Porth Nobla, Llanfaelog	Anglesey	No
Porth Tyn Llanfaelog	Anglesey	No
Rhosneigr	Anglesey	Yes
Traeth Crigyll	Anglesey	No
Silver Bay Rhoscolyn	Anglesey	Yes
Borth Wen	Anglesey	Yes
Porth Tywyn Mawr (Sandy Beach)	Anglesey	No
Cemlyn	Anglesey	No
St Davids - Benllech	Anglesey	Yes
Marine Lake, Rhyl	Denbighshire	Yes

### Green Coast Awards

Year	1999	2000	2001	2002	2003	2004	2005	2006	2007	2008	2009	2010	2011	2012	2013	2014
Number of Green Coast Awards	9	24	21	26	44	40	41	50	46	46	44	48	47	51	35	31

Chart 6: Green Coast Awards 1999 to 2014

### Green Coast Award Beaches in Wales 1999-2014

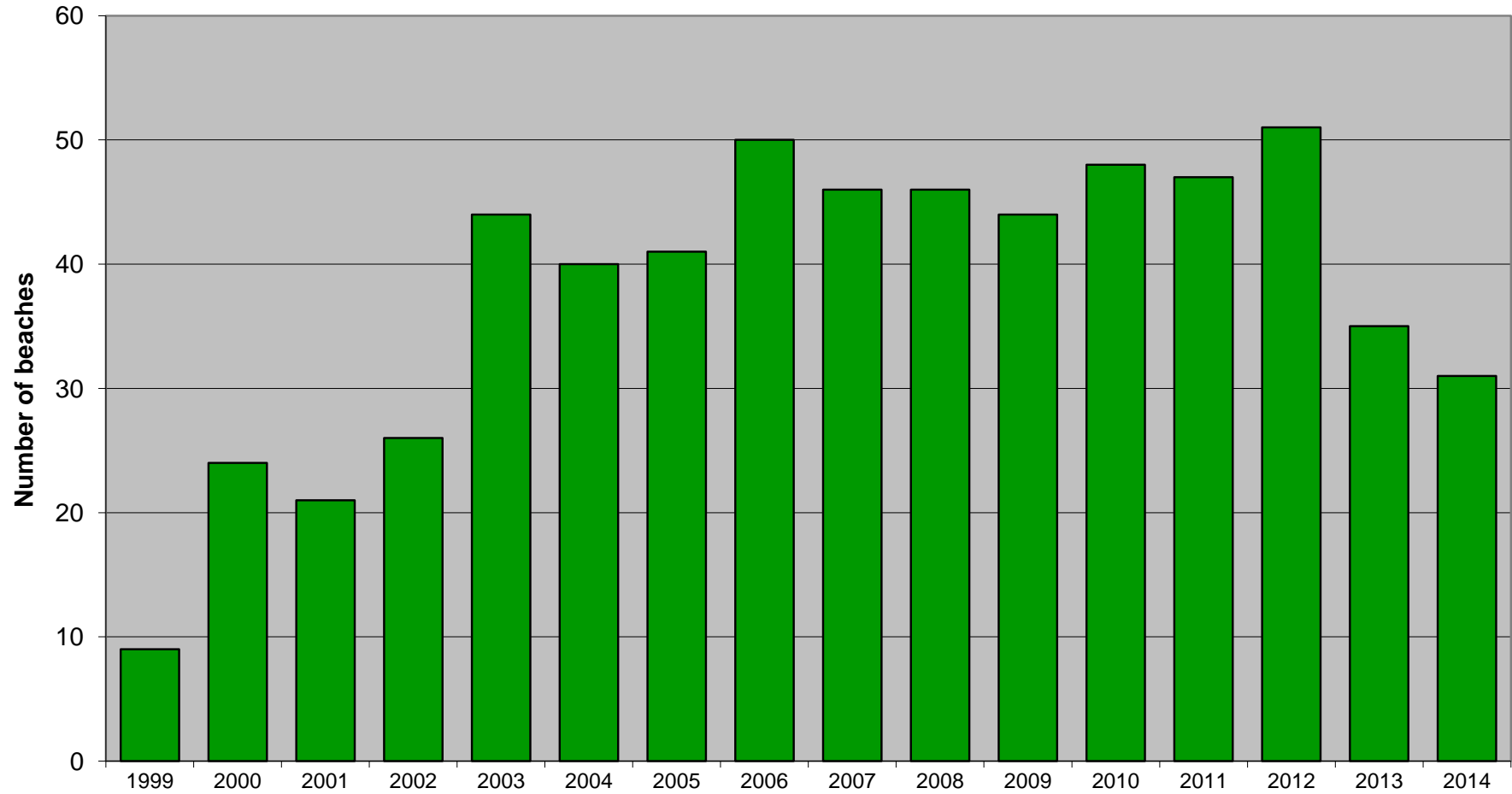


Table 12: Non-EC identified bathing waters: indicative projected revised Bathing Water Directive classifications using 2011 to 2014 data.

Sample Point Number	Bathing Water	Indicative rBWD classification 2009-2012	Indicative rBWD classification 2010-2013	Indicative rBWD classification 2011-2014
19038	Fontygary Bay, Rhoose	EXCELLENT	EXCELLENT	NOT SAMPLED
74050	Llantwit Major	GOOD	GOOD	NOT SAMPLED
19043	Ogmore Central	POOR	POOR	NOT SAMPLED
19044	Ogmore Slip	POOR	POOR	NOT SAMPLED
39161	Rhossili	EXCELLENT	EXCELLENT	EXCELLENT
74025	Broughton Bay	SUFFICIENT	SUFFICIENT	SUFFICIENT
39003	Burry Port	SUFFICIENT	SUFFICIENT	NOT SAMPLED
83777	Glen Beach	SUFFICIENT	SUFFICIENT	GOOD
39574	Monkstone Beach (Nr Tenby)	EXCELLENT	EXCELLENT	EXCELLENT
83616	Waterwynch Bay	GOOD	GOOD	GOOD
39573	Priory Bay, Caldy Island	EXCELLENT	EXCELLENT	EXCELLENT
83776	Swanlake Bay	EXCELLENT	EXCELLENT	EXCELLENT
39037	Gelliswick, Milford Haven	POOR	POOR	POOR
39571	Westdale	EXCELLENT	EXCELLENT	EXCELLENT
39041	Martin's Haven	EXCELLENT	EXCELLENT	EXCELLENT
39042	St. Brides Haven	SUFFICIENT	POOR	POOR
83778	Porthselau	EXCELLENT	EXCELLENT	EXCELLENT
83613	Goodwick Sands	SUFFICIENT	EXCELLENT	EXCELLENT
32790	Pwllgwaelod	POOR	POOR	POOR
32791	Cwm yr Eglwys	EXCELLENT	EXCELLENT	EXCELLENT
32426	Cwmtymdu	POOR	SUFFICIENT	SUFFICIENT
39146	Llanina	POOR	POOR	POOR
39081	Little Quay (Cei Bach)	POOR	POOR	SUFFICIENT
39082	Aberaeron South (Northern Groyne)	SUFFICIENT	SUFFICIENT	SUFFICIENT
32428	Aberarth	SUFFICIENT	GOOD	GOOD
32429	Llanon	POOR	SUFFICIENT	SUFFICIENT
32430	Llansantffraid	GOOD	GOOD	GOOD
20022	Ynyslas (Northern Groyne - Sea)	GOOD	GOOD	EXCELLENT
20399	Ynyslas (Twyni Bach - Estuary)	POOR	POOR	POOR
23141	Criccieth West End	SUFFICIENT	SUFFICIENT	SUFFICIENT
22545	Abererch	GOOD	GOOD	GOOD
22549	Llanbedrog	POOR	NOT SAMPLED	NOT SAMPLED
27539	Porth Treacastell	EXCELLENT	EXCELLENT	EXCELLENT
27540	Porth Nobla, Llanfaelog	EXCELLENT	EXCELLENT	EXCELLENT
23476	Porth Tyn Llanfaelog	EXCELLENT	EXCELLENT	EXCELLENT
23477	Traeth Crigyll	EXCELLENT	EXCELLENT	EXCELLENT
27547	Porth Tywyn Mawr (Sandy Beach)	EXCELLENT	EXCELLENT	EXCELLENT
23480	Porth Trwyn	GOOD	GOOD	GOOD
27531	Cemlyn	EXCELLENT	EXCELLENT	EXCELLENT
23481	Traeth Bach	SUFFICIENT	SUFFICIENT	SUFFICIENT
27549	Porth Eilian, Amlwch	SUFFICIENT	SUFFICIENT	SUFFICIENT
27561	Moelfre	POOR	SUFFICIENT	SUFFICIENT

Sample Point Number	Bathing Water	Indicative rBWD classification 2009-2012	Indicative rBWD classification 2010-2013	Indicative rBWD classification 2011-2014
25806	Red Wharf Bay	SUFFICIENT	POOR	SUFFICIENT
27564	Lleiniog Beach Penmon	GOOD	GOOD	GOOD
27757	Beaumaris	EXCELLENT	GOOD	GOOD
23246	Conwy Morfa	SUFFICIENT	SUFFICIENT	NOT SAMPLED
25045	Penrhyn Bay	SUFFICIENT	SUFFICIENT	NOT SAMPLED
23492	Old Colwyn	GOOD	GOOD	SUFFICIENT
3597	Llanddulas	GOOD	SUFFICIENT	NOT SAMPLED
3610	Splash Point	SUFFICIENT	SUFFICIENT	SUFFICIENT
3611	Ffrith, Prestatyn	GOOD	GOOD	GOOD
3614	Barkby Beach	EXCELLENT	GOOD	GOOD
26311	Gronant Dunes	EXCELLENT	EXCELLENT	GOOD
3617	Point of Ayr, Talacre	GOOD	GOOD	GOOD

<b>Excellent</b>	18	17	16
<b>Good</b>	11	13	12
<b>Sufficient</b>	14	14	12
<b>Poor</b>	11	9	5
<b>Total</b>	54	53	45

Table 13: Seaside Award beaches 2014

<b>Bathing Water</b>	<b>Local Authority</b>	<b>Designated?</b>	<b>Seaside Award 2014</b>
Trecco Bay Porthcawl	Bridgend	Yes	Resort
Rest Bay Porthcawl	Bridgend	Yes	Resort
Aberafan	Neath and Port Talbot	Yes	Resort
Bracelet Bay	Swansea	Yes	Resort
Langland Bay	Swansea	Yes	Resort
Caswell Bay	Swansea	Yes	Resort
Port Eynon Bay	Swansea	Yes	Resort
Pembrey	Carmarthenshire	Yes	Resort
Pendine	Carmarthenshire	Yes	Resort
Amroth	Pembrokeshire	Yes	Resort
Wisemans Bridge	Pembrokeshire	Yes	Rural
Coppet Hall	Pembrokeshire	Yes	Resort
Saundersfoot	Pembrokeshire	Yes	Resort
Tenby North	Pembrokeshire	Yes	Resort
Castle Beach, Tenby	Pembrokeshire	Yes	Resort
Tenby South	Pembrokeshire	Yes	Resort
Penally	Pembrokeshire	Yes	Rural
Lydstep	Pembrokeshire	Yes	Resort
Manorbier	Pembrokeshire	Yes	Rural
Freshwater East	Pembrokeshire	Yes	Rural
Barafundle	Pembrokeshire	Yes	Rural
Broadhaven South	Pembrokeshire	Yes	Rural
West Angle	Pembrokeshire	Yes	Rural
Gelliswick, Milford Haven	Pembrokeshire	No	Rural
Sandy Haven	Pembrokeshire	Yes	Rural
Dale	Pembrokeshire	Yes	Resort
Marloes	Pembrokeshire	Yes	Rural
Martin's Haven	Pembrokeshire	No	Rural
St. Brides Haven	Pembrokeshire	No	Rural
Little Haven	Pembrokeshire	Yes	Rural
Broadhaven	Pembrokeshire	Yes	Resort
Druidston Haven	Pembrokeshire	Yes	Rural
Nolton Haven	Pembrokeshire	Yes	Rural
Newgale	Pembrokeshire	Yes	Resort
Whitesands	Pembrokeshire	Yes	Resort
Aberiddy	Pembrokeshire	Yes	Rural
Goodwick Sands	Pembrokeshire	No	Rural
Cwm yr Eglwys	Pembrokeshire	No	Rural
Newport	Pembrokeshire	Yes	Rural
Poppit Sands	Pembrokeshire	Yes	Rural
Mwnt	Ceredigion	Yes	Rural



<b>Bathing Water</b>	<b>Local Authority</b>	<b>Designated?</b>	<b>Seaside Award 2014</b>
Aberporth	Ceredigion	Yes	Resort
Tresaith	Ceredigion	Yes	Resort
Penbryn	Ceredigion	Yes	Rural
Llangrannog	Ceredigion	Yes	Resort
Cil Borth	Ceredigion	Yes	Resort
Cwmtedu	Ceredigion	No	Rural
New Quay, North Beach	Ceredigion	Yes	Rural
Newquay Harbour	Ceredigion	Yes	Resort
Little Quay (Ceil Bach)	Ceredigion	No	Rural
Llanrhystyd	Ceredigion	Yes	Rural
Aberystwyth South	Ceredigion	Yes	Resort
Aberystwyth North	Ceredigion	Yes	Resort
Clarach South	Ceredigion	Yes	Rural
Borth	Ceredigion	Yes	Resort
Tywyn	Gwynedd	Yes	Resort
Fairbourne	Gwynedd	Yes	Rural
Barmouth	Gwynedd	Yes	Resort
Dyffryn (Llanendwyn)	Gwynedd	Yes	Rural
Llandanwg	Gwynedd	Yes	Rural
Harlech	Gwynedd	Yes	Rural
Craig Du Beach Central	Gwynedd	Yes	Resort
Criccieth	Gwynedd	Yes	Resort
Criccieth West End	Gwynedd	No	Rural
Abererch	Gwynedd	No	Rural
Pwllheli	Gwynedd	Yes	Resort
Abersoch	Gwynedd	Yes	Resort
Aberdaron	Gwynedd	Yes	Resort
Morfa Dinlle	Gwynedd	Yes	Resort
Llanddwyn	Anglesey	Yes	Resort
Aberffraw	Anglesey	Yes	Rural
Porth Tre Castell	Anglesey	No	Rural
Porth Nobla, Llanfaelog	Anglesey	No	Rural
Porth Tyn Llanfaelog	Anglesey	No	Rural
Rhosneigr	Anglesey	Yes	Rural
Traeth Crigyll	Anglesey	No	Rural
Silver Bay Rhoscolyn	Anglesey	Yes	Rural
Borth Wen	Anglesey	Yes	Rural
Trearddur Bay	Anglesey	Yes	Resort
Porth Dafarch	Anglesey	Yes	Resort
Porth Tywyn Mawr (Sandy Beach)	Anglesey	No	Rural
Porth Trwyn	Anglesey	No	Rural
Church Bay	Anglesey	Yes	Resort

<b>Bathing Water</b>	<b>Local Authority</b>	<b>Designated?</b>	<b>Seaside Award 2014</b>
Cemlyn	Anglesey	No	Rural
Traeth Bach	Anglesey	No	Rural
Cemaes	Anglesey	Yes	Resort
Porth Eilian, Amlwch	Anglesey	No	Rural
Traeth Lligwy	Anglesey	Yes	Rural
Moelfre	Anglesey	No	Rural
Benllech	Anglesey	Yes	Resort
St Davids - Benllech	Anglesey	Yes	Rural
Red Wharf Bay	Anglesey	No	Rural
Llanddona	Anglesey	Yes	Resort
Lleiniog Beach Penmon	Anglesey	No	Rural
Beaumaris	Anglesey	No	Rural
Llanfairfechan	Conwy	Yes	Resort
Penmaenmawr	Conwy	Yes	Resort
Llandudno West Shore	Conwy	Yes	Resort
Llandudno North Shore	Conwy	Yes	Resort
Colwyn Bay	Conwy	Yes	Resort
Old Colwyn	Conwy	No	Rural
Abergele (Pensarn)	Conwy	Yes	Resort
Kinmel Bay (Sandy Cove)	Conwy	Yes	Rural
Rhyl	Denbighshire	Yes	Resort
Prestatyn	Denbighshire	Yes	Resort
Point of Ayr, Talacre	Flintshire	No	Rural

<b>RESORT</b>	51
<b>RURAL</b>	55
<b>TOTAL</b>	<b>106</b>

# Appendix 1: Criteria for assessing compliance with current Bathing Water Directive (cBWD) standards

Article 3 of the EC Directive on the quality of bathing waters (76/160/EEC) requires member states to set bathing water quality standards no less stringent than those specified as "Mandatory" (or Imperative, I) values in the annex to the Directive. Article 3 also requires member states to endeavour to observe "Guideline" (G) values as guidelines, whether or not there is a corresponding "I" value.

The standards given in the Directive are as follows:

Parameter up to 2011	Equivalent Parameter from 2012 onwards in Directive 2006/7/EC	Imperative Standard	Guideline Standard
<b>Microbiological</b>			
Faecal coliforms	E. Coli	2000/100 ml	100/100 ml
Total coliforms	None	10000/100 ml	500/100 ml
Faecal streptococci	Intestinal Enterococci		100/100 ml
Salmonella	None		0 / litre
Enteroviruses	None		0 PFU/10 litres
<b>Physico-chemical</b>			
pH	None	6 to 9	
Colour	None	No abnormal change in colour	
Mineral Oils	None	No film visible on water surface and no odour	0.3 mg/ litre
Surface Active Substances	None	No lasting foam	0.3 mg/ litre
Phenols	None	No specific odour (0.005 mg / litre)	0.005 mg / litre
Transparency *	None	Extinction depth of 1 m for Secchi disc - equivalent to 6.665 ftu (turbidity)	Extinction depth of 2 m for Secchi disc - turbidity value not yet calculated
Tarry Residues and Persistent Floating Materials	None		Must be absent

\* Wales was granted derogation for transparency at all its bathing waters so was not required to comply with these standards.

Article 5 sets out the detailed requirements for compliance.

For "I" value determinands:

- a) 95% of the samples must comply with the "I" value
- b) The 5% not complying with the "I" value must not allow consecutive samples taken at statistically valid intervals to exceed the "I" value, i.e. "I" value failures must be of short duration.

For "G" value determinands:

- a) 90% of the samples must conform with the "G" value for faecal streptococci; 80% of the samples must conform with the "G" value for total and faecal coliforms.
- b) The 10 or 20% not complying with the "G" value must not allow consecutive samples taken at statistically valid intervals to exceed the "G" value, i.e. "G" value failures should be of short duration.

## Appendix 2: Criteria for assessing compliance with the revised Bathing Water Directive (rBWD) standards

Directive 2006/7/EC of the European Parliament and of the Council of 15 February 2006 is known as the revised Bathing Water Directive. Classifications are based on four years of sampling data. The standards that must not be exceeded for each class are given as follows in Annex II of the Directive.

Coastal waters and transitional waters (such as estuarine bathing waters):

Parameter	Excellent quality	Good quality	Sufficient quality	Reference methods of analysis
Intestinal enterococci (colony forming units (cfu)/100ml)	100 (*)	200 (*)	185 (**)	ISO 7899-1 or ISO 7899-2
Escherichia coli (colony forming units (cfu)/100ml)	250 (*)	500 (*)	500 (**)	ISO 9308-3 or ISO 9308-1

(\*) based upon a 95-percentile evaluation

(\*\*) based upon a 90-percentile evaluation

Inland bathing waters

Parameter	Excellent quality	Good quality	Sufficient quality	Reference methods of analysis
Intestinal enterococci (colony forming units (cfu)/100ml)	200 (*)	400 (*)	330 (**)	ISO 7899-1 or ISO 7899-2
Escherichia coli (colony forming units (cfu)/100ml)	500 (*)	1000 (*)	900 (**)	ISO 9308-3 or ISO 9308-1

The percentiles are a statistical measure calculated using the mean and standard deviation of the log<sub>10</sub> values of the results in the four year calculation period, and do not refer to values complied with by 90% or 95% of samples.

Bathing waters failing to meet these standards are classified as Poor.

# Appendix 3: In-situ determinands

The observations of in-situ determinands for the Bathing Water profile are taken from the normal sampling line, at the same time as bathing water samples. The parameters examined are listed below:

Number of Bathers per 100m  
Number of Beach Users

Bathers means people in contact with the water within 50m either side of the sampling location; beach users means people 50m either side of the sampling location but not in contact with the water.

Macroalgae  
Algal Bloom  
Oil and Tar  
Other Litter  
Animal Faeces  
Dead Marine Life  
Sewage Debris

The determinands above are measured on a coded scale of 0 – 3. The quantification of coded materials is clearly subjective but to attempt some standardisation the following has been suggested:

- 0 No material present
- 1 Trace present;
- 2 Some at intervals;
- 3 Sufficient to be objectionable (unable to walk to sea without coming into contact with any).

In this case photographs would be taken by the sampler.

The determinands for the Bathing Water profile examine the following:

Macroalgae	Refers to seaweed which may be stranded, floating or attached to rocks or sediment. However it does not include seaweed attached to rocks that is always present.
Algal blooms	A further sample is taken for analysis when algal blooms are present.
Oil and tar	Refers to diesel and lubricating oil and the washings from seagoing tankers, either semi-solid or globules. If an oil sheen is present on the water surface, a further sample is taken for analysis.
Animal faeces	Mainly dog, horse, bird, donkey and sheep.
Dead marine life	Includes crabs, lug worms, heart urchins, jellyfish, sea birds (but not land birds) and fish.

Sewage debris refers to items such as:

- human faeces
- contraceptives
- tampon applicators and sanitary towels

- cotton buds
- toilet paper

Other litter refers to terrestrially derived litter and debris that is not likely to have been discharged from a sewage outfall including:

- cans
- plastic containers
- paper
- wood
- rope

If wood is present the sampler records whether it is from marine or terrestrial origins.

Data on the following determinands were also collected for some samples in 2011, although there is no requirement to do so:

- Wind direction (Degrees)
- Water Temperature (Celsius)
- Salinity (ppt)
- Wind Speed (Beaufort scale)
- State of Sea
- Sunshine

State of Sea is coded as follows:

0	Calm (Glassy)	Wave height 0 m
1	Calm (Rippled)	Wave height 0 - 0.1 m
2	Smooth (Wavelets)	Wave height 0.1 - 0.5 m
3	Light Waves	Wave height 0.5 - 1.25 m
4	Moderate (White Horses)	Wave height 1.25 - 2 m
5	Rough Waves	Wave height 2.5 - 5.0 m
6	Very Rough Waves	Wave height 4.0 - 6.0 m

Beaufort scale wind force for bathing water samples is coded as follows:

0	Calm
1	Light airs
2	Light breeze
3	Gentle breeze
4	Moderate breeze
5	Fresh breeze
6	Strong breeze

Sunshine is coded as follows:

0	Sun obscured
1	Weak, no shadow
2	Weak shadows
3	Briefly obscured
4	Bright sun
5	Below horizon

# Appendix 4: EC identified bathing water sample point details 2014

Bathing Water	Sample Point National Grid Reference (NGR)	Sample Point Number	Welsh Government/ Defra Number	Year of Designation
Jackson's Bay Barry Island	ST1220066570	19055	36100	1988
Whitmore Bay Barry Island	ST1145066250	19034	36200	1988
Cold Knap Barry	ST0985466455	19037	36300	1988
Southerndown	SS8846573155	19100	36400	1988
Trecco Bay Porthcawl	SS8309176675	19114	36500	1988
Sandy Bay Porthcawl	SS8244876839	19117	36600	1988
Rest Bay Porthcawl	SS8039478054	19122	36700	1988
Aberafan	SS7418789841	19051	36800	1988
Swansea Bay	SS6433692137	74006	36900	1988
Bracelet Bay	SS6296487262	39105	37000	1988
Limeslade Bay	SS6254687124	39106	37100	1988
Langland Bay	SS6073287391	39109	37200	1988
Caswell Bay	SS5920387608	39111	37300	1988
Oxwich Bay	SS5031986448	39123	37400	1988
Port Eynon Bay	SS4694785099	39127	37500	1988
Rhossili	SS4112590857	74010	37600	1988
Pembrey	SS4007899784	39005	37700	1988
Pendine	SN2381807854	39010	37800	1988
Amroth Central	SN1682107137	39013	37900	1988
Wiseman's Bridge	SN1465506133	32797	37940	2012
Coppet Hall	SN1403505352	32421	37980	2000
Saundersfoot	SN1372804848	39017	38000	1988
Tenby North	SN1330400845	39020	38100	1988
Castle Beach, Tenby	SN1372800431	39022	38150	1999
Tenby South	SN1315000022	39024	38200	1988
Penally	SS1230198934	83617	38210	2012
Lydstep	SS0919298393	39570	38220	1997
Manorbier	SS0609797507	39027	38230	1997
Freshwater East	SS0185297878	39029	38235	1999
Barafundle	SR9905795048	39136	38238	2000
Broad Haven (South)	SR9773993967	32422	38240	1997
Freshwater West	SR8848399739	39031	38248	2012
West Angle	SM8534903183	39032	38250	2000
Sandy Haven	SM8593307248	39192	38255	2012
Dale	SM8118505860	39040	38260	2000
Marloes Sands	SM7836607479	32788	38280	1997
Little Haven	SM8567612936	39043	38295	2012

<b>Bathing Water</b>	<b>Sample Point National Grid Reference (NGR)</b>	<b>Sample Point Number</b>	<b>Welsh Government/ Defra Number</b>	<b>Year of Designation</b>
Broad Haven (Central)	SM8608513801	84231	38300	1988
Druidston Haven	SM8613817238	39141	38340	2012
Nolton Haven	SM8589018569	39046	38380	2012
Newgale	SM8498921689	39048	38400	1988
Caerfai	SM7612524371	39142	38460	1997
Whitesands	SM7334027087	84232	38500	1988
Abereddy	SM7972131264	39053	38520	2012
Abermawr	SM8827434642	39144	38540	2012
Newport North	SN0537140473	39065	38600	1988
Poppit West	SN1520648712	39067	38630	1996
Mwnt	SN1936951909	32425	38640	2011
Aberporth	SN2576351582	39072	38660	1995
Tresaith	SN2777951558	39073	38670	1995
Penbryn	SN2927652472	39147	38675	2011
Llangrannog	SN3104454193	39075	38680	1997
Cilborth	SN3113654411	32851	38685	2011
New Quay North	SN3895260148	39077	38688	2011
New Quay Harbour	SN3903159952	39079	38690	1998
Traeth Gwyn New Quay	SN3972859488	39080	38700	1988
Llanrhystud	SN5241769067	39087	38750	2011
Aberystwyth South	SN5794281314	39091	38800	1988
Aberystwyth North	SN5823881898	39093	38900	1988
Clarach South	SN5870483751	39095	38920	1998
Borth (southern end) *	SN6062089011	28540	39000	1988
Aberdyfi	SN6071995765	20171	39050	1990
Tywyn	SH5767000320	20019	39100	1988
Fairbourne	SH6091013070	20402	39200	1988
Barmouth	SH6084015900	20014	39300	1988
Tal-y-Bont	SH5775021100	20026	39350	1995
Dyffryn (Llanendwyn)	SH5671022580	20027	39360	1995
Llandanwg	SH5669028180	20028	39400	1988
Harlech	SH5676031480	22596	39500	1988
Craig Du Beach Central	SH5362036410	22593	39600	1988
Criccieth	SH5033338075	23142	39700	1988
Pwllheli	SH3710034070	22589	39800	1988
Abersoch	SH3168027720	22552	39900	1988
Porth Neigwl	SH2808026310	25437	39920	2012
Aberdaron	SH1733026260	22553	39950	2011
Morfa Nefyn	SH2823040910	22559	39960	2012
Morfa Dinlle	SH4349056690	22564	39970	1988
Llyn Padarn	SH5739660866	28594	39975	2014
Llanddwyn	SH4034063050	27537	39980	1997



Bathing Water	Sample Point National Grid Reference (NGR)	Sample Point Number	Welsh Government/ Defra Number	Year of Designation
Aberffraw	SH3524067640	27538	39985	2000
Rhosneigr	SH3237072120	27536	39990	1990
Silver Bay Rhoscolyn	SH2925075160	27541	39993	2005
Borth Wen	SH2732075000	27542	39995	2003
Trearddur Bay	SH2556078910	27532	40000	1988
Porth Dafarch	SH2330079900	27546	40010	1998
Church Bay	SH2997089400	27548	40030	2003
Cemaes	SH3732093620	27529	40050	1998
Traeth Lligwy	SH4990087520	27528	40085	2003
Benllech	SH5268082560	27551	40100	1988
St Davids - Benllech	SH5307082040	23491	40105	2005
Llanddona	SH5660081210	27562	40140	1997
Llanfairfechan	SH6802075810	23245	40170	2008
Penmaenmawr	SH7180076930	22995	40180	1995
Llandudno West Shore	SH7655081650	25032	40200	1988
Llandudno North Shore	SH7832082490	23486	40300	1988
Colwyn Bay	SH8463480141	28409	40400	1988
Abergele (Pensarn)	SH9445079000	3601	40450	2011
Kinmel Bay (Sandy Cove)	SH9780080600	3604	40500	1988
Marine Lake, Rhyl	SJ0010080600	26434	40550	2012
Rhyl	SJ0020082600	3608	40600	1988
Rhyl East	SJ0099082051	28414	40650	2014
Prestatyn	SJ0585084200	3612	40700	1988

\* Borth was sampled at a temporary sample point in 2014 due to flood defence engineering works. Its usual sample point is number 20023 at National Grid Reference SN6060490085. This is the same temporary sample point used for earlier works in 2011 and 2013.

## Appendix 5: The Monitoring Calendar

Although the rBWD specifies that at least four samples per season must be taken, in England and Wales the decision has been made to carry on taking 20 samples, as under the cBWD. The sampling frequency will be reviewed after the end of the transition period between the current and revised Directives.

Samples are taken according to a monitoring calendar set out in advance of the season. Twenty dates are selected for each designated bathing water. Each sample must be taken on the specified date or up to four days afterwards (“the five day window”), or the sampling opportunity is lost because samples taken outside the five day window do not count for the compliance dataset. Delaying a sample within the five day window would

be due to unforeseen circumstances such as vehicle breakdown, staff sickness absence, or health and safety issues at the sampling point such as rock falls or sea conditions dangerous for the sampler.

If a sample does not arrive at the lab in time for analysis to start within 24 hours, or if there is a lab error which means the sample cannot be used, the sample can be retaken as long as it is still taken within the five day window. If it is not possible to retake the sample within the five day window then that sample is lost from the dataset with no replacement. For this reason samples would not normally be postponed within the five day window through choice, as these opportunities to retake would be lost.

## Appendix 6: Abnormal Weather Waivers and Abnormal Situations

The rBWD contains a provision for Abnormal Situations. An Abnormal Situation is not expected to occur on average more than once every four years. If the beach operator places signs at the bathing water advising the public that an Abnormal Situation is taking place and that water quality may be affected then the monitoring calendar can be suspended. Ongoing Abnormal Situations are also displayed online on the Bathing Water Data Explorer. A sample must be taken as soon as the Abnormal Situation is over to confirm the end of the event. The reasons for suspending the monitoring calendar form part of the submission to the EC at the end of the season.

Abnormal Situations are not the same as Abnormal Weather Waivers. Abnormal Weather Waivers ceased to exist when the cBWD was rescinded prior to the 2012 season and there is no legal provision for discounting a sample because of an Abnormal Situation after the sample has already been taken. Abnormal Situations cannot include rainfall or weather events as we would have to know in advance that the return period of the rainfall was less frequent than 1 in 4 years. Abnormal situations could be water quality related events such as a pumping station failure, or events preventing sampling such as rockfalls at the beach.

There was one Abnormal Situation in Wales during the 2014 season. No bathing water samples were postponed as there were none due to be taken during the time the monitoring calendar was suspended.

Bathing water	Reason	Started	Ended	Abnormal situation description
Llyn Padarn	Potential contamination from sewage	12/06/2014	17/06/2014	This was due to an incident occurring on the 12th June, when the sewage treatment works was overwhelmed by a fuel oil spill from a local hotel. The final effluent appeared to have been compromised and visually deteriorated, causing discolouration to Afon y Bala flowing into the lake.

# Appendix 7: Non-EC identified bathing water sample point details 2014

Bathing Water	Sample Point Number	Sample Point National Grid Reference (NGR)	Local Authority
Rhossili	39161	SS4135988416	Swansea
Broughton Bay	74025	SS4180293145	Swansea
Glen Beach	83777	SN1400004500	Pembrokeshire
Monkstone Beach (Nr Tenby)	39574	SN1480003100	Pembrokeshire
Waterwynch Bay	83616	SN1370001900	Pembrokeshire
Priory Bay, Caldy Island	39573	SS1380097000	Pembrokeshire
Swanlake Bay	83776	SS0450098000	Pembrokeshire
Gelliswick, Milford Haven	39037	SM8880005500	Pembrokeshire
Westdale	39571	SM7980005800	Pembrokeshire
Martin's Haven	39041	SM7610009200	Pembrokeshire
St. Brides Haven	39042	SM8020010900	Pembrokeshire
Porthselau	83778	SM7260026000	Pembrokeshire
Goodwick Sands	83613	SM9480037900	Pembrokeshire
Pwllgwaelod	32790	SN0030039900	Pembrokeshire
Cwm yr Eglwys	32791	SN0149040130	Pembrokeshire
Cwmtedu	32426	SN3555057650	Ceredigion
Llanina	39146	SN4030059800	Ceredigion
Little Quay (Cei Bach)	39081	SN4100059800	Ceredigion
Aberaeron South (Northern Groyne)	39082	SN4530062800	Ceredigion
Aberarth	32428	SN4765063870	Ceredigion
Llanon	32429	SN5067066750	Ceredigion
Llansantffraid	32430	SN5086067180	Ceredigion
Ynyslas (Northern Groyne - Sea)	20022	SN6040093750	Ceredigion
Ynyslas (Twyni Bach - Estuary)	20399	SN6120094300	Ceredigion
Criccieth West End	23141	SH5017537967	Gwynedd
Abererch	22545	SH4031035790	Gwynedd
Porth Trecastell	27539	SH3321070660	Anglesey
Porth Nobla, Llanfaelog	27540	SH3292071160	Anglesey
Porth Tyn Llanfaelog	23476	SH3274071580	Anglesey
Traeth Crigyll	23477	SH3143073240	Anglesey
Porth Tywyn Mawr (Sandy Beach)	27547	SH2867085160	Anglesey
Porth Trwyn	23480	SH2950087800	Anglesey
Cemlyn	27531	SH3356093160	Anglesey
Traeth Bach	23481	SH3710093600	Anglesey

<b>Bathing Water</b>	<b>Sample Point Number</b>	<b>Sample Point National Grid Reference (NGR)</b>	<b>Local Authority</b>
Porth Eilian, Amlwch	27549	SH4768092960	Anglesey
Moelfre	27561	SH5133086250	Anglesey
Red Wharf Bay	25806	SH5320081200	Anglesey
Lleiniog Beach Penmon	27564	SH6250079020	Anglesey
Beaumaris	27757	SH6095076000	Anglesey
Old Colwyn	23492	SH8662078750	Conwy
Splash Point	3610	SJ0190082700	Denbighshire
Ffrith, Prestatyn	3611	SJ0460083600	Denbighshire
Barkby Beach	3614	SJ0653084500	Denbighshire
Gronant Dunes	26311	SJ0790084600	Denbighshire
Point of Ayr, Talacre	3617	SJ1210085900	Flintshire